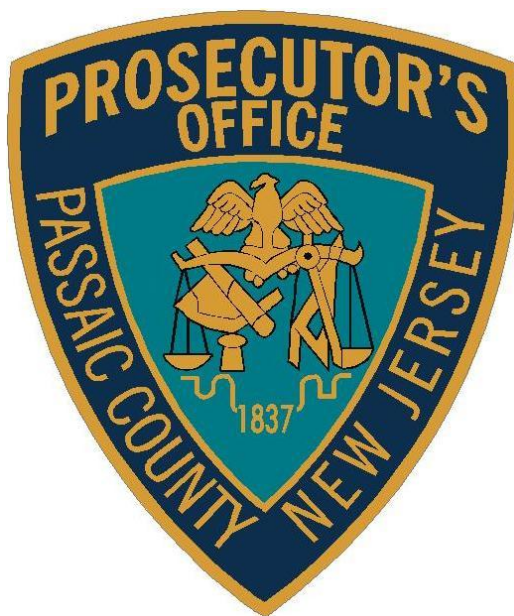


***Passaic County Prosecutor's Office
Intelligence/Homeland Security Unit***



***Passaic County Overdose Environment
January 2016 - December 2016***

The following document has been prepared and disseminated by the Passaic County Prosecutor's Office. The information contained in this Intelligence Report is LAW ENFORCEMENT SENSITIVE and may only be shared with or distributed to law enforcement personnel. Any individual who disseminates this Report to non-law enforcement personnel or any other person not authorized to receive it will be subject to criminal prosecution. Information contained in this report shall not be utilized as probable cause for an arrest or other law enforcement action.



PASSAIC COUNTY OVERDOSE ANALYSIS

JANUARY 1, 2016 -DECEMBER 31, 2016



BACKGROUND

The Passaic County Prosecutor's Office continues to conduct analysis of autopsy reports retrieved from unattended deaths which occur in Passaic County that were investigated from January 1, 2016 through December 31, 2016. The content in this report is based on the information retrieved from the medical examiner's office which reports the cause(s) of these deaths being in the form of substance abuse.

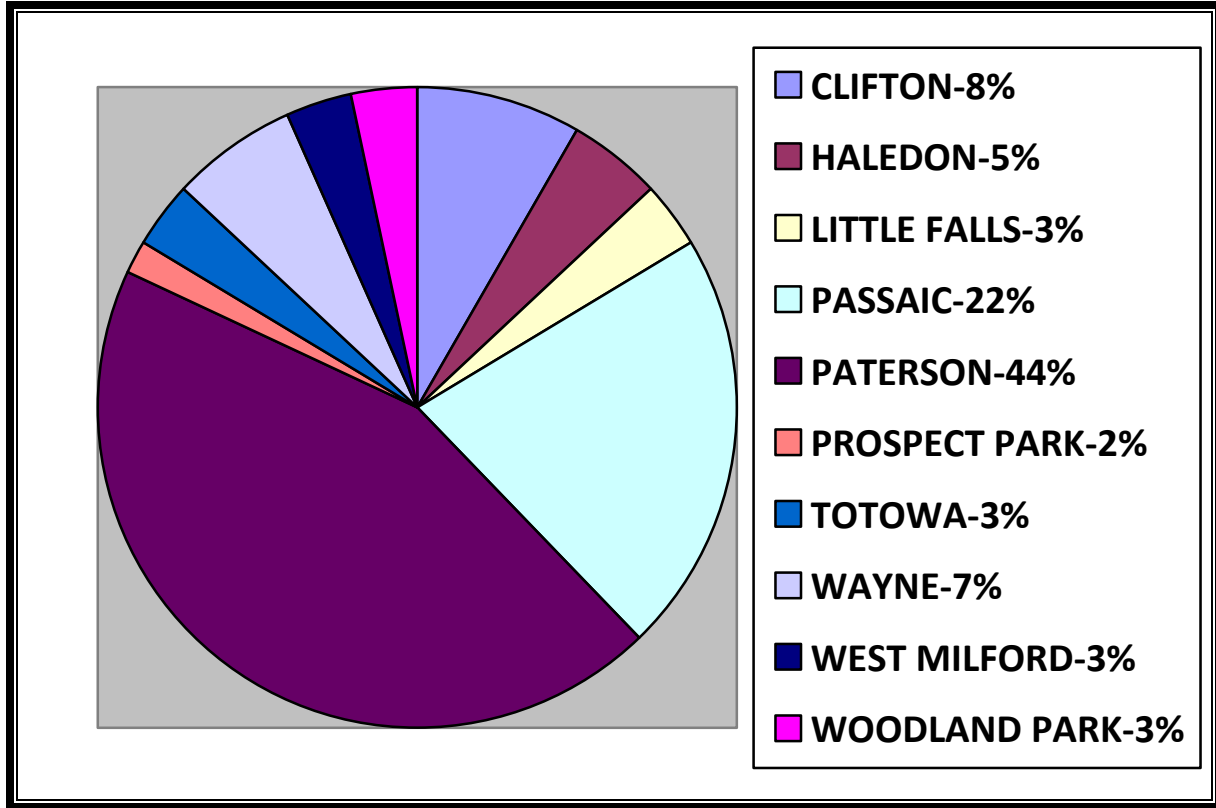
It should be noted that reporting documentation tends to be delayed, therefore the data may fluctuate as there are continuous updates to the fatal overdose reporting.

PASSAIC COUNTY OVERDOSE ANALYSIS

JANUARY 1, 2016 -DECEMBER 31, 2016



Key Findings



Total Cases Reported= 61

OVERVIEW

During the time period listed, there were 61 Fatal Overdoses reported in Passaic County, New Jersey. The City of Paterson had the greatest amount of fatal drug overdoses with twenty-seven (27) or 44% of the cases reported. The City of Passaic had the second highest amount with thirteen (13) or 22% in their municipality. The City of Clifton had five (5) or 8%, Wayne Township had four (4) or 7%, Haledon had three (3) or 5%. Little Falls, Totowa, West Milford and Woodland Park each had two (2) or 3% of the fatal overdoses reported. Prospect Park had one (1) or 2% of the cases reported.

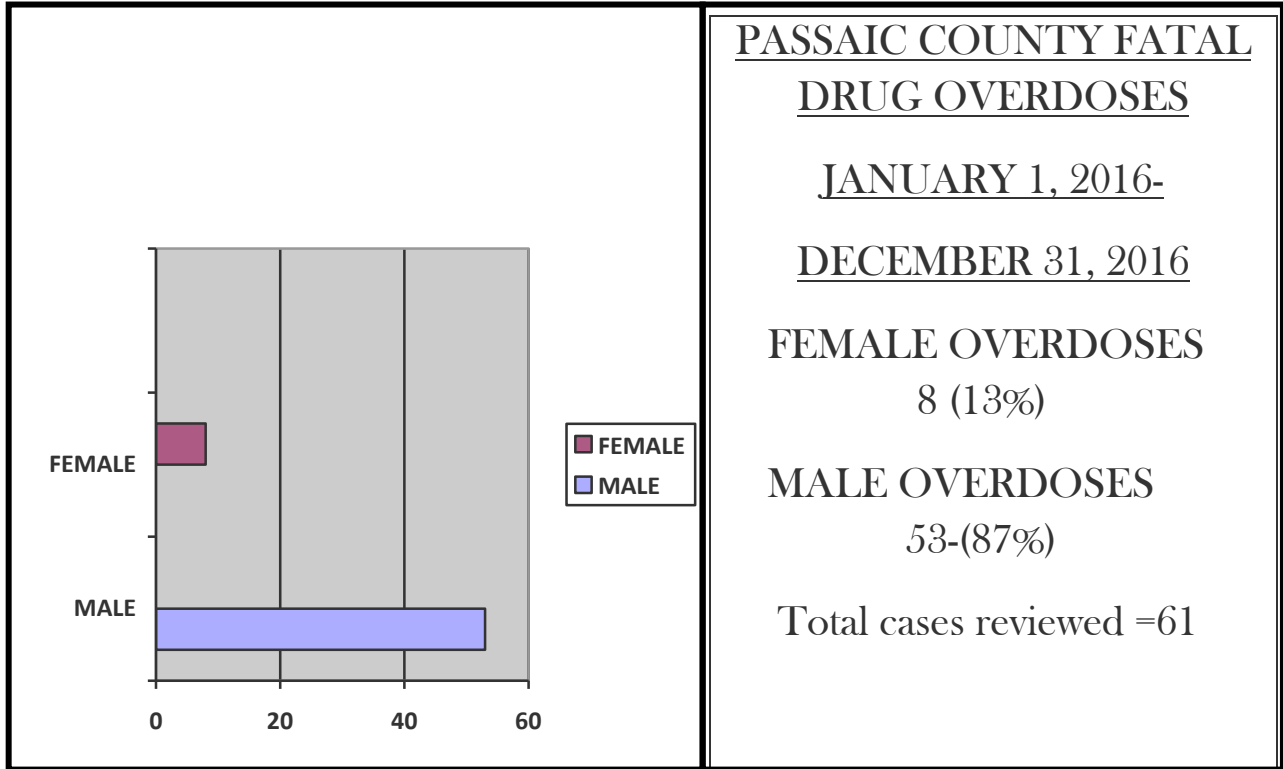


PASSAIC COUNTY OVERDOSE ANALYSIS

JANUARY 1, 2016 -DECEMBER 31, 2016



Fatal Overdoses by Gender



OVERVIEW

Between January 2016 and December 2016 males overdosed at a greater rate at 87% with a total number of 53 cases. Females at a lower rate of 13% with a total of 8 cases.

The percentage of females overdosing has decreased over this period of time compared to the last few years. Males tended to overdose at a higher rate caused by Heroin abuse.

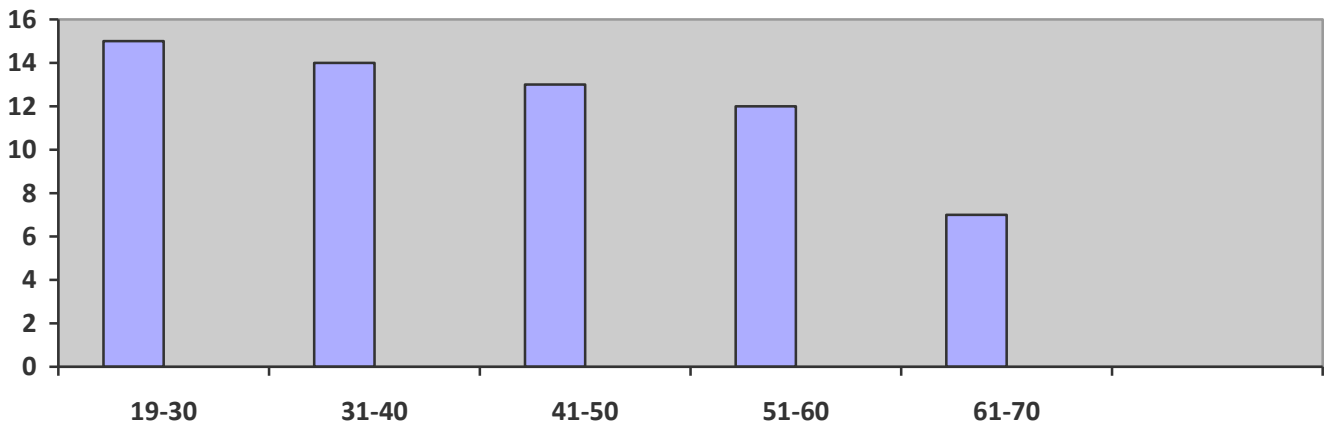


PASSAIC COUNTY OVERDOSE ANALYSIS

JANUARY 1, 2016 -DECEMBER 31, 2016



Fatal Overdoses by Age



Total Cases Reviewed=61

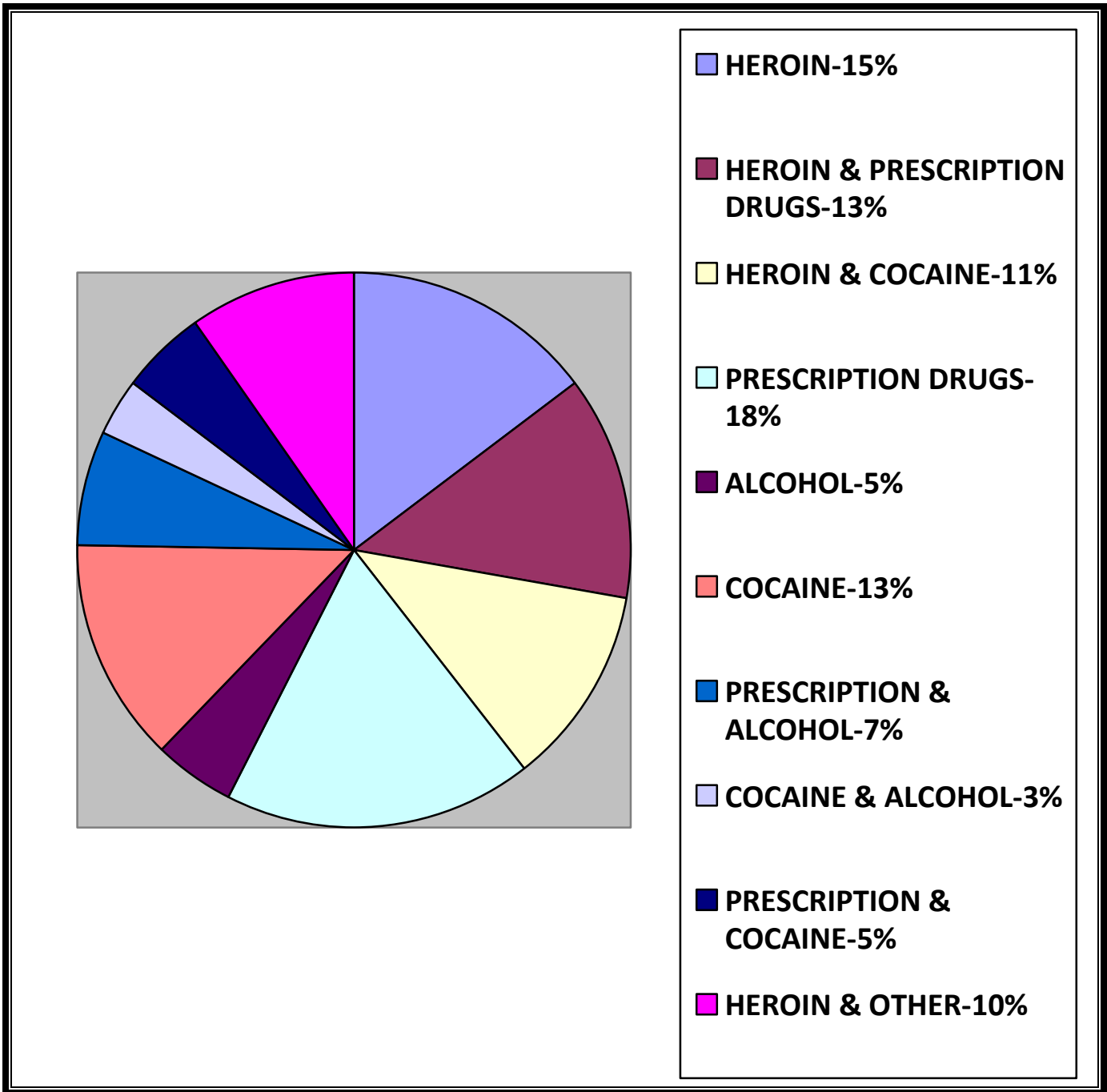
19-30 Year Old-15 Cases (25%)
31-40 Year Old-14 Cases (23%)
41-50 Year Old-13 Cases (21%)
51-60 Year Old-12 Cases (20%)
61-70 Year Old-4 Cases (11%)

OVERVIEW

The greatest number of Fatal Overdoses reported was in the age group of 19-30 year olds having 25% or fifteen (15) cases. 31-40 year olds had the second highest percentage at 23% with fourteen (14) cases reported. 41-50 year olds had 21% with thirteen (13) of the cases listed. 51-60 year olds had twelve (12) cases or 20%. 61-70 year olds had the least amount of cases reported with four (4) or 11% of the total. It should be noted that the first age group category (19-30), was lowered for the first time in this report to include 19 year olds, indicating that fatal overdoses has now victimized a younger age group in Passaic County.

PASSAIC COUNTY OVERDOSE ANALYSIS

JANUARY 1, 2016 -DECEMBER 31, 2016



Total Cases Reviewed=61



PASSAIC COUNTY OVERDOSE ANALYSIS

JANUARY 1, 2016 -DECEMBER 31, 2016



OVERVIEW

The utilization of Heroin alone regarding these fatal overdoses is responsible for 15% of the cases reported.

As we reviewed these cases compared to past analysis, the utilization of Heroin alone has increased as the main cause of death. In the past three years, other factors have also been present (i.e.: prescription drugs, alcohol intoxication) as the contributing causes in accidental/overdose deaths reported. These factors were responsible for 51% of the Fatal Overdoses reported. Heroin and Heroin combined with other factors, make up a total of 49% of all Fatal Overdoses for this reporting period.

Fentanyl or Fentanyl laced Heroin was traced in thirteen (13) or 42% of the thirty-one (31) cases that involved Heroin. We will continue to monitor any Fentanyl related overdose deaths to ensure the public's safety and raise awareness as this trend continues to emerge.

Cocaine has been very prevalent as well during this reporting period, with seven (8) or 13% of the cases reviewed. Most of those cases were reported in the City of Passaic.

Prescription Drugs remains steady as a factor in these Fatal Overdoes with eleven (11) or 18% of the cases reported, although it has decreased on this reporting period as the third cause in these deaths.



PASSAIC COUNTY OVERDOSE ANALYSIS



JANUARY 1, 2016 -DECEMBER 31, 2016

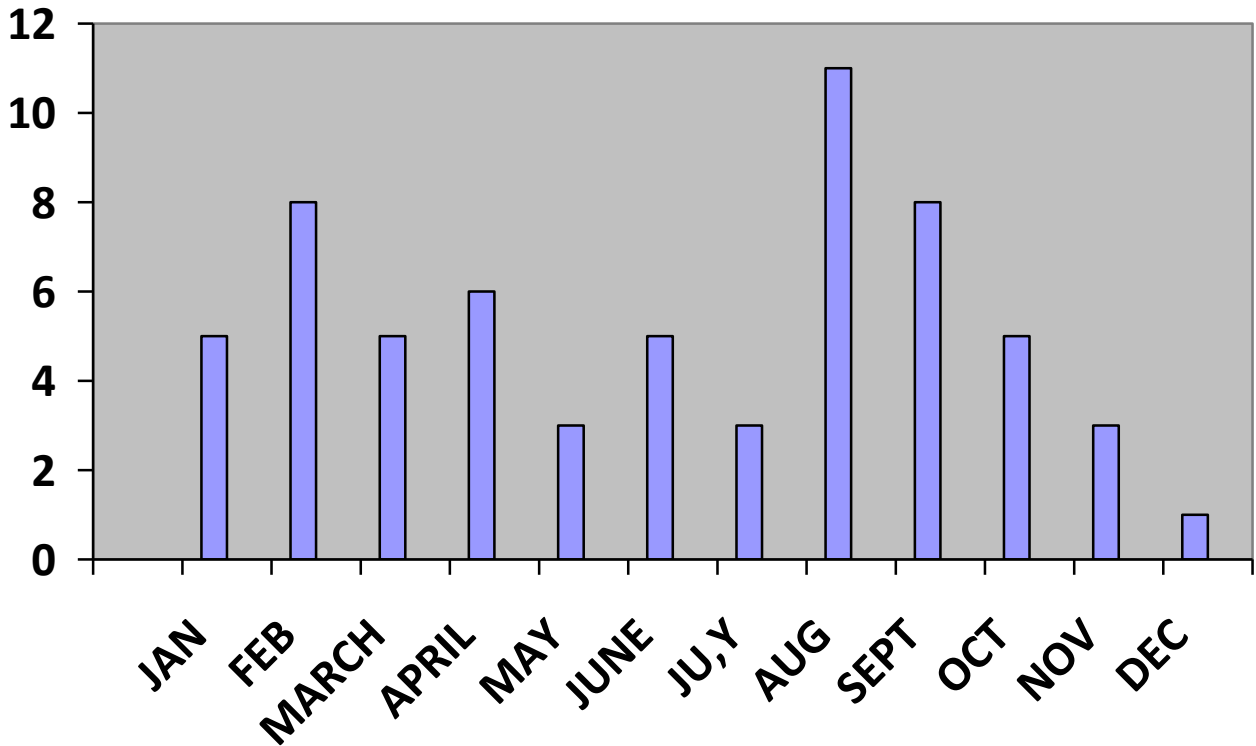
FATAL OVERDOSES BY MONTH

The tables and charts below illustrate the comparisons of overdoses reported in Passaic County.

January 1, 2016 - December 31, 2016 (61 cases reported)

We do expect these statistics to fluctuate as reporting is delayed.

Jan	Feb	March	April	May	June	July	Aug	Sept	Oct	Nov	Dec
5	8	3	6	3	5	3	11	8	5	3	1





PASSAIC COUNTY OVERDOSE ANALYSIS



JANUARY 1, 2016 -DECEMBER 31, 2016

NASAL NAXOLONE-NARCAN STATISTICS

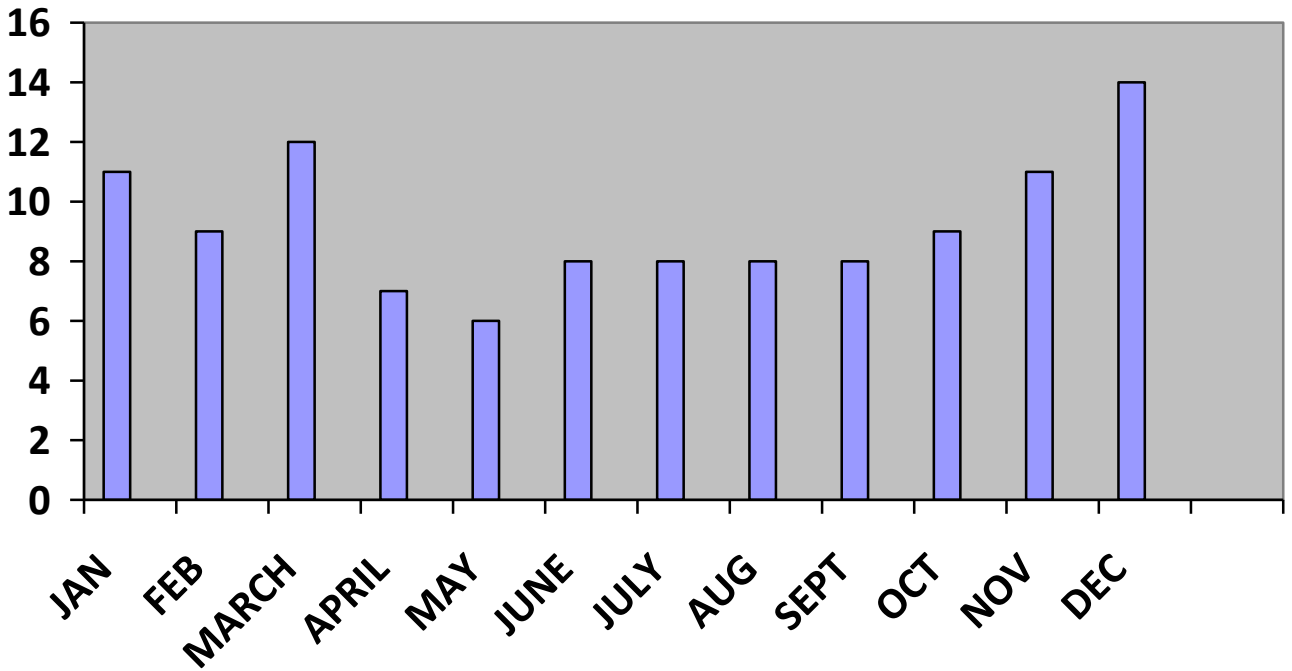
Nasal Naxolone-Narcan was implemented in Passaic County in August 2014 in an effort by the State of New Jersey to thwart fatal overdoses. The deployment of Narcan has increased over the past year as predicted. We expect this trend to continue.

The tables and charts illustrate the 2016 Narcan Deployments by month in Passaic County.

JANUARY 1, 2016-DECEMBER 31, 2016 (111 DEPLOYMENTS REPORTED)

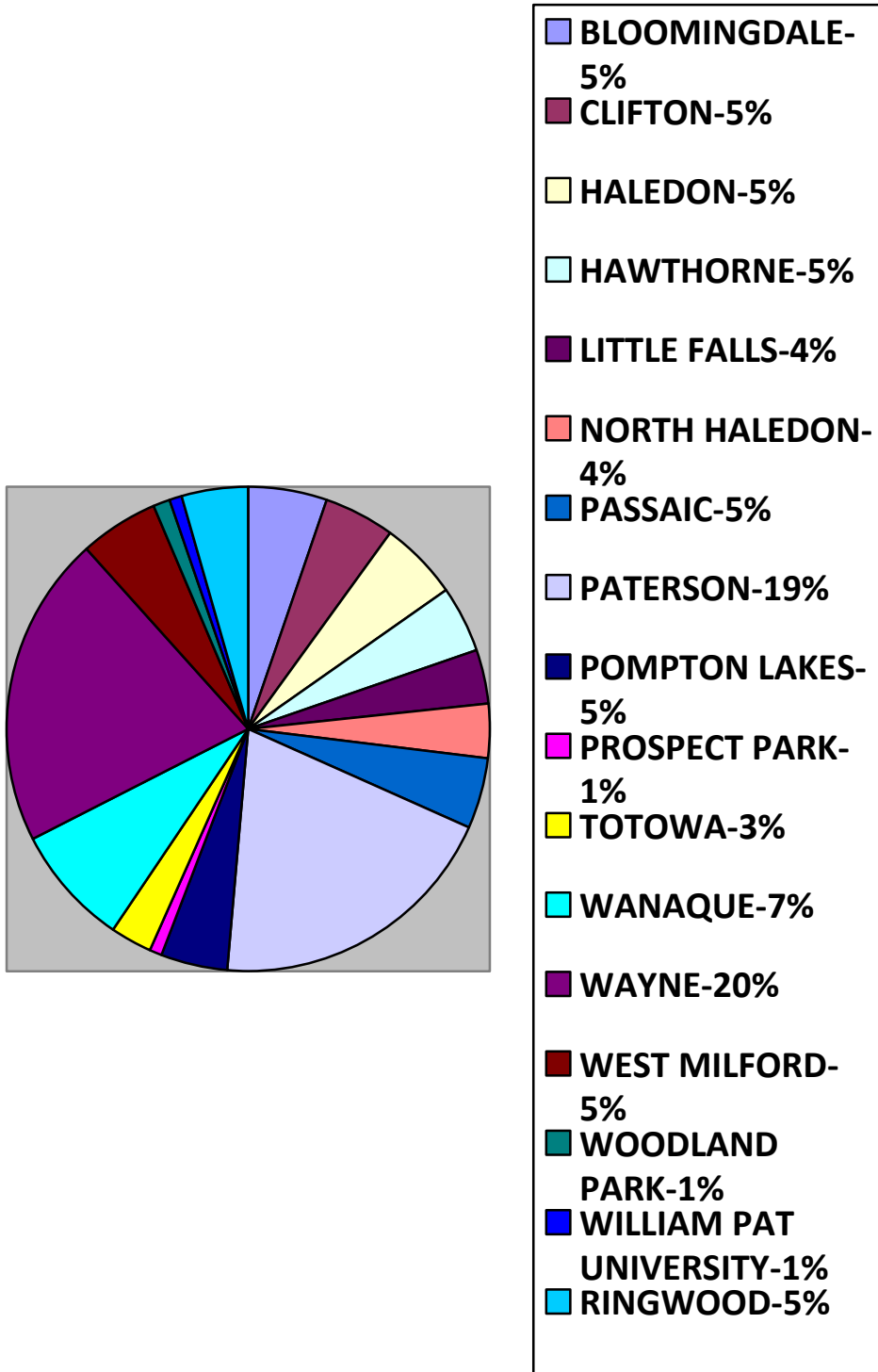
***5% INCREASE OVER SAME TIME PERIOD IN 2015
106 DEPLOYMENTS 2015 VS. 111 DEPLOYMENTS 2016***

JAN	FEB	MARCH	APRIL	MAY	JUNE	JULY	AUG	SEPT	OCT	NOV	DEC
11	9	12	7	6	8	8	8	9	9	11	14



PASSAIC COUNTY OVERDOSE ANALYSIS

JANUARY 1, 2016 -DECEMBER 31, 2016





PASSAIC COUNTY OVERDOSE ANALYSIS

JANUARY 1, 2016 -DECEMBER 31, 2016



OVERVIEW

During the time period of January 1, 2016- December 31, 2016 there were one-hundred eleven (111) Nasal Naxolone -Narcan Deployments in Passaic County.

The chart above illustrates these deployments administrated by Passaic County Police Departments.

Wayne Police Department administered the greatest amount of Narcan with twenty-three (23) or 20% of the deployments followed by the City of Paterson with 19% (please note that one of the deployments in the City of Paterson was administered by the Passaic County Sheriff's Department).

Wanaque Police Department had nine (9) or 7% of the deployments, Bloomingdale, Haledon, and West Milford each had six (6) or 5% of the deployments listed. Clifton Police Department, Hawthorne, Passaic and Ringwood each had five (5) or 5% of the deployments.

Little Falls and North Haledon Police Departments had four (4) or 4% of the deployments listed.

The remaining agencies listed each had one (1) or 1% of the deployments.

There were individuals who resided OUTSIDE of Passaic County but were administered Narcan in a Passaic County Municipality

Bergen County residents-7 (6%)

Sussex County residents -4 (4%)

Morris County resiednts-4 (4%)

Hudson County residents-2 (2%)

Essex County residents-2 (2%)

Ocean County residents-2 (2%)

South Carolina resident-1 (1%)

New York State residents-2 (2%)

.



PASSAIC COUNTY OVERDOSE ANALYSIS

JANUARY 1, 2016 -DECEMBER 31, 2016



IMPACT AND RECOMMENDATIONS

Heroin, Cocaine and Prescription drug abuse remains to be problematic in this county and throughout New Jersey. Substance abuse, fatal and non-fatal overdoses continues to be a priority to be addressed in Passaic County. Passaic County municipalities have remained vigilant regarding Narcan deployments aiding in the reducing the amount of overdose fatalities.

Heroin task force initiatives as well as outreach to Passaic County communities should be maintained as an effort in reducing these overdose trends.

For additional information regarding this Intelligence Product please contact:

***Detective Nancy Petrara-Stafyleras
Passaic County Prosecutor's Office
Intelligence/Homeland Security Unit***

nstafyleras@passaiccountynj.org

The following document has been prepared and disseminated by the Passaic County Prosecutor's Office. The information contained in this Intelligence Report is LAW ENFORCEMENT SENSITIVE and may only be shared with or distributed to law enforcement personnel. Any individual who disseminates this Report to non-law enforcement personnel or any other person not authorized to receive it will be subject to criminal prosecution. Information contained in this report shall not be utilized as probable cause for an arrest or other law enforcement action.