

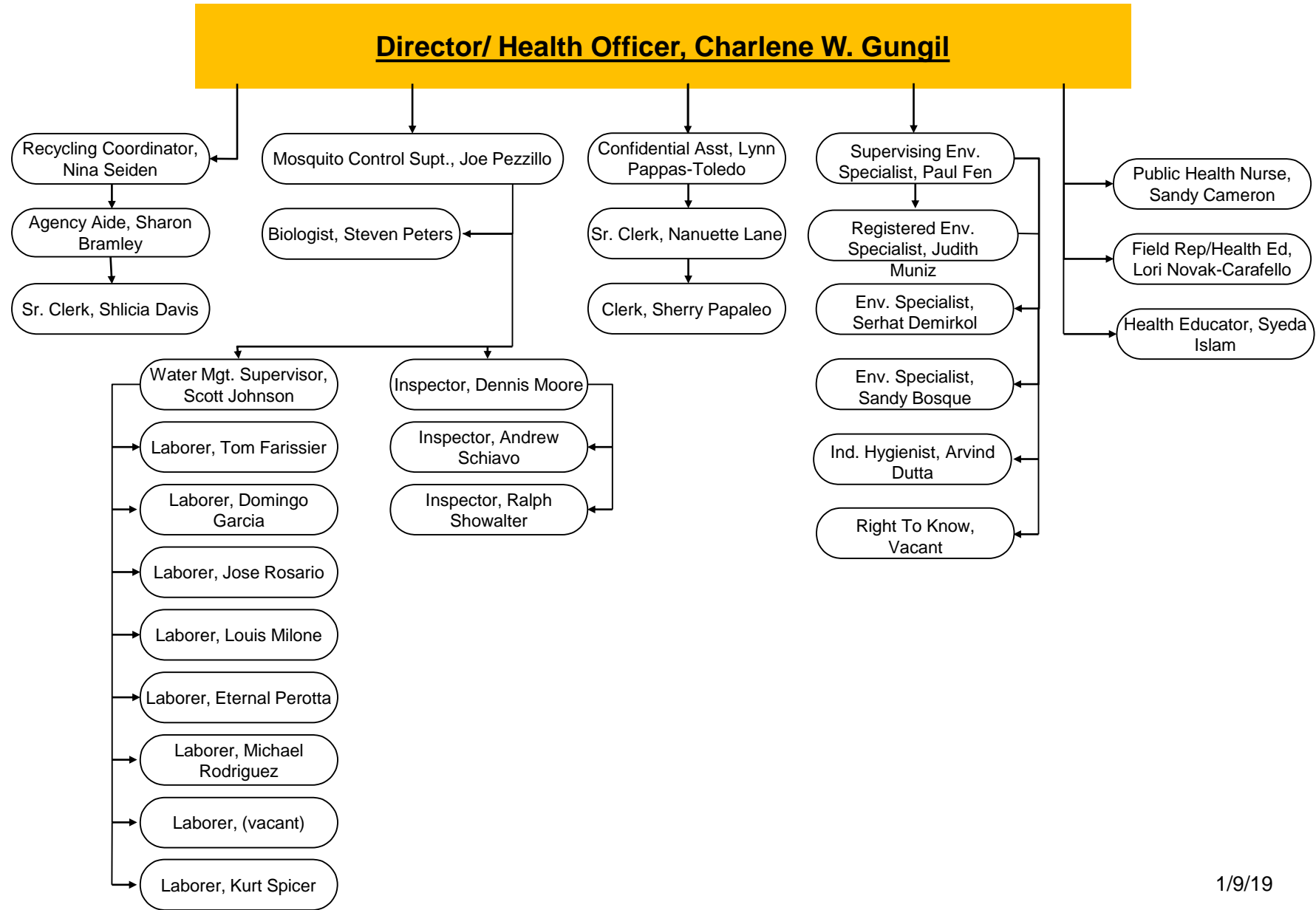
# THE STATUS OF PASSAIC COUNTY'S HEALTH 2018

Presented to Freeholder Board on January 22, 2019

Charlene W. Gungil, DHSc., MPH CPM

Director and Health Officer/Passaic County Department of Health Services

# Passaic County Department of Health Organizational Chart



- ▶ Public Health Emergency Preparedness (BT Team)
- ▶ Environmental (County Environmental Health Act - CEHA)
- ▶ Mosquito Control (MC)
- ▶ Recycling and Solid Waste (RSW)

FOUR DIVISIONS

- ▶ **Mission:** to serve our community through the delivery and promotion of services focused on improving and protecting the health of our residents and the environment.
- ▶ **Vision:** A healthy, safe community and environment, leading to longer and healthier lives in the County of Passaic.

## MISSION AND VISION

- ▶ We are committed to assuring the preservation, protection, and promotion of the health, well-being, and quality of life for Passaic County residents through partnerships that strengthen the public and environmental health infrastructure.
- ▶ We believe in providing competent and caring leadership to diverse populations for the enhancement of Passaic County.

MISSION CONTINUED

## ▶ **Medical Reserve Corps (MRC)**

- ▶ A cadre of 399 (41 new in 2018) trained community and professional volunteers
- ▶ 244 are non health community volunteers
- ▶ 155 are health professionals
- ▶ received instructional materials on how to prepare and protect their families should there be an emergency in or County or State.

ACCOMPLISHMENTS BT TEAM 2018

- ▶ 226 mainly college students trained in Mental Health First Aid
- ▶ 275 Residents trained in Hands Only CPR
- ▶ 274 Eye exams
- ▶ 229 Blood Pressure and glucose
- ▶ 123 Flu Shots given to employees

SAMPLE OF BT SERVICES PROVIDED

- ▶ 972 inspections/responses for environmental compliance.
- ▶ Issued 184 notices of violations.
- ▶ Collected \$17,630 in penalty payments and cost of investigations.

ACCOMPLISHMENTS IN 2018 - CEHA



- ▶ **560 requests for service:** 120 through PassaicCountyNJ.org
- ▶ 24-hour response to almost all requests
- ▶ **Stocked 10,000 fathead minnows** throughout county for larval control
- ▶ First time **New Jersey Tick Blitz 2018** – 3 tick drags in the County

ACCOMPLISHMENTS - MC

- ▶ Presented 1,051 education programs to 28,404 students in all 16 Passaic County municipalities.
- ▶ Tires, document shredding, computers and electronics, household hazardous waste recycling events in 14 of 16
- ▶ Added 9 Big Belly Solar Recycling & Trash Compactors – now 48
- ▶ Attained 75,000 Passaic County users of the Recycle Coach App
- ▶ First ever Bicycle and Sewing Machine Collection Event in Woodland Park.

## ▶ ACCOMPLISHMENTS RSW

# Who We are

**Passaic County Department of Health Services (PCDHS)**  
**"TEAM PASSAIC"**



- ▶ Measures of the current health status of almost every county in the USA
  - ▶ High school graduation
  - ▶ access to healthy foods
  - ▶ rates of smoking
  - ▶ Obesity
  - ▶ teen births, etc.

COUNTY HEALTH RANKINGS 2018 #13/21

- ▶ Adult Smoking
- ▶ Adult Obesity
- ▶ Access to Exercise Opportunities
- ▶ Sexually Transmitted Diseases
- ▶ Food Environment Index

HEALTH FACTORS - EXAMPLES

## ▶ Passaic's Overall Rank: Health Factors 18/ 21

- **Long Commute - Driving Alone**
- **Driving alone to work** - This is the most damaging to the health of communities
- **Severe Housing Problems** is the percentage of households with at least 1 or more of the following housing problems:

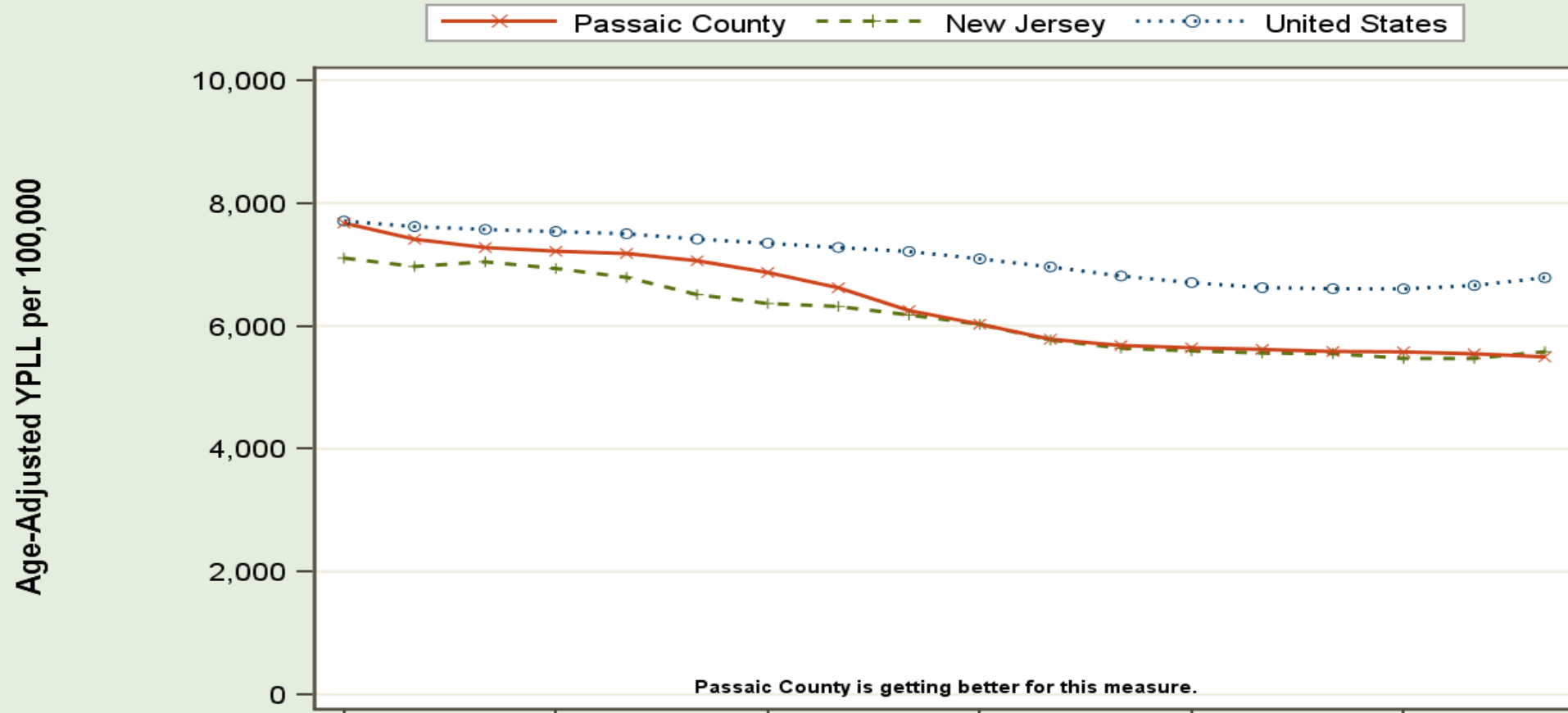
**WHAT THE HEALTH FACTORS MEAN**

## ▶ Clinical Care (2018)

	Passaic	Top US	New Jersey
▶ Prim Care Phys	1,690:1	1,030:1	1,130:1
▶ Dentists	1,350:1	1,280:1	1,190:1
▶ Mental health providers	960:1	330:1	530:1
▶ Mammography screening	58%	61%	71%

WHAT HEALTH FACTORS MEAN

## Premature death in Passaic County, NJ Years of Potential Life Lost (YPLL): County, State and National Trends



3-year Average	1997-1999	2000-2002	2003-2005	2006-2008	2009-2011	2012-2014												
United States	7,705	7,615	7,569	7,535	7,499	7,411	7,345	7,275	7,209	7,090	6,959	6,811	6,704	6,622	6,605	6,601	6,658	6,783
New Jersey	7,102	6,966	7,043	6,933	6,790	6,508	6,363	6,315	6,178	6,025	5,770	5,636	5,593	5,558	5,548	5,470	5,469	5,579
Passaic County	7,672	7,409	7,274	7,214	7,178	7,059	6,868	6,620	6,248	6,028	5,782	5,680	5,642	5,616	5,583	5,576	5,545	5,494

Please see *Measuring Progress/Rankings Measures* for more information on trends. Trends were measured using all years of data



- **Quality of Life (BRFSS Survey – self-reported) Poor or Fair Health**

Question: “In general, would you say that your health is excellent, very good, good, fair, or poor?”

- **Poor Physical Health Days**

- Question: “Thinking about your physical health, which includes physical illness and injury, for how many days during the past 30 days was your physical health not good?”
- Results: the average number of days reported as “not good”.

- ▶ Work Together
- ▶ Assess Needs & Resources
- ▶ Focus On What's Important
- ▶ Choose Effective Policies & Programs
- ▶ Act on What's Important
- ▶ Evaluate Actions
- ▶ Communicate

## **ACTION STEPS**

# WHAT'S NEXT FOR PARTNERS IN PASSAIC COUNTY

## Identify Partners with Shared Vision

- ▶ Community Development
- ▶ Community Members
- ▶ Educators
- ▶ Government
- ▶ Healthcare Professional and Advocate
- ▶ Non-Profits
- ▶ Philanthropy
- ▶ Public Health Professionals and Advocates

- ▶ **United Way**
  - ▶ **Food Policy Council**
  - ▶ Building a Culture of Health
  
- ▶ **Community Health Needs Assessment**
  - St. Mary's Community Advisory Group
  - Passaic County Public Health Partnership
  - North Jersey Health **Collaborative**
  
- ▶ **St. Joseph's Regional Medical Center**
  - Passaic County Health **Collaborative**

CURRENT COLLABORATIONS INCLUDE

## ▶ **What Works for Health**

- ▶ Based on a model of population health
- ▶ Emphasis on making communities healthier
- ▶ Strategies and programs that can affect health through changes to:
  - ▶ health behaviors, clinical care, social and economic factors, and
  - ▶ the physical environment.

**LEVERAGING ACTIVITIES TO IMPROVE PASSAIC  
COUNTY HEALTH RANKINGS**

- ▶ Building a Culture of Health: Blueprint for Action (2017)
- ▶ Community Health Improvement Plan (CHIP) (2016)
- ▶ Essex – Passaic Wellness Coalition
- ▶ Passaic County Public Health Partnership CHNA (2016)
- ▶ North Jersey Health Collaborative's Community Health Needs Assessment (2018)

COUNTYWIDE HEALTH INITIATIVES INCLUDE

- ▶ NJ DOH – Governmental Public Health Partnership  
<http://www.njhealthmatters.org/index.php?module=Tiles&controller=index&action=display&alias=passaic>
- ▶ County Health rankings: <http://www.countyhealthrankings.org/app/new-jersey/2018/rankings/passaic/county/outcomes/overall/snapshot>
- ▶ North Jersey Health Collaborative: retrieved from  
<http://www.njhealthmatters.org/tiles/index/display?alias=passaic>

## REFERENCES