

N. J. Preliminary State Plan DELTA MAP- Cross-Acc. III PASSAIC COUNTY

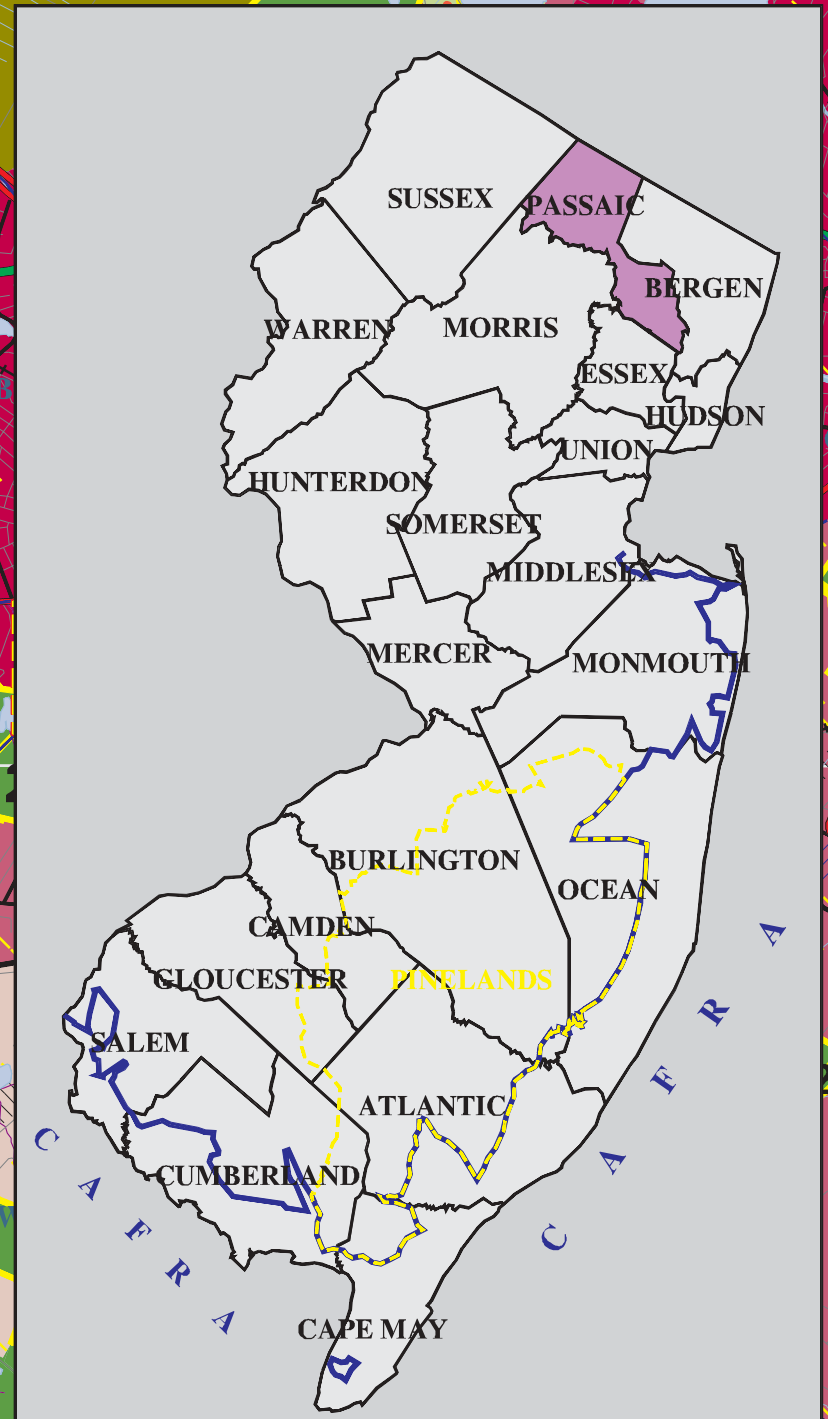
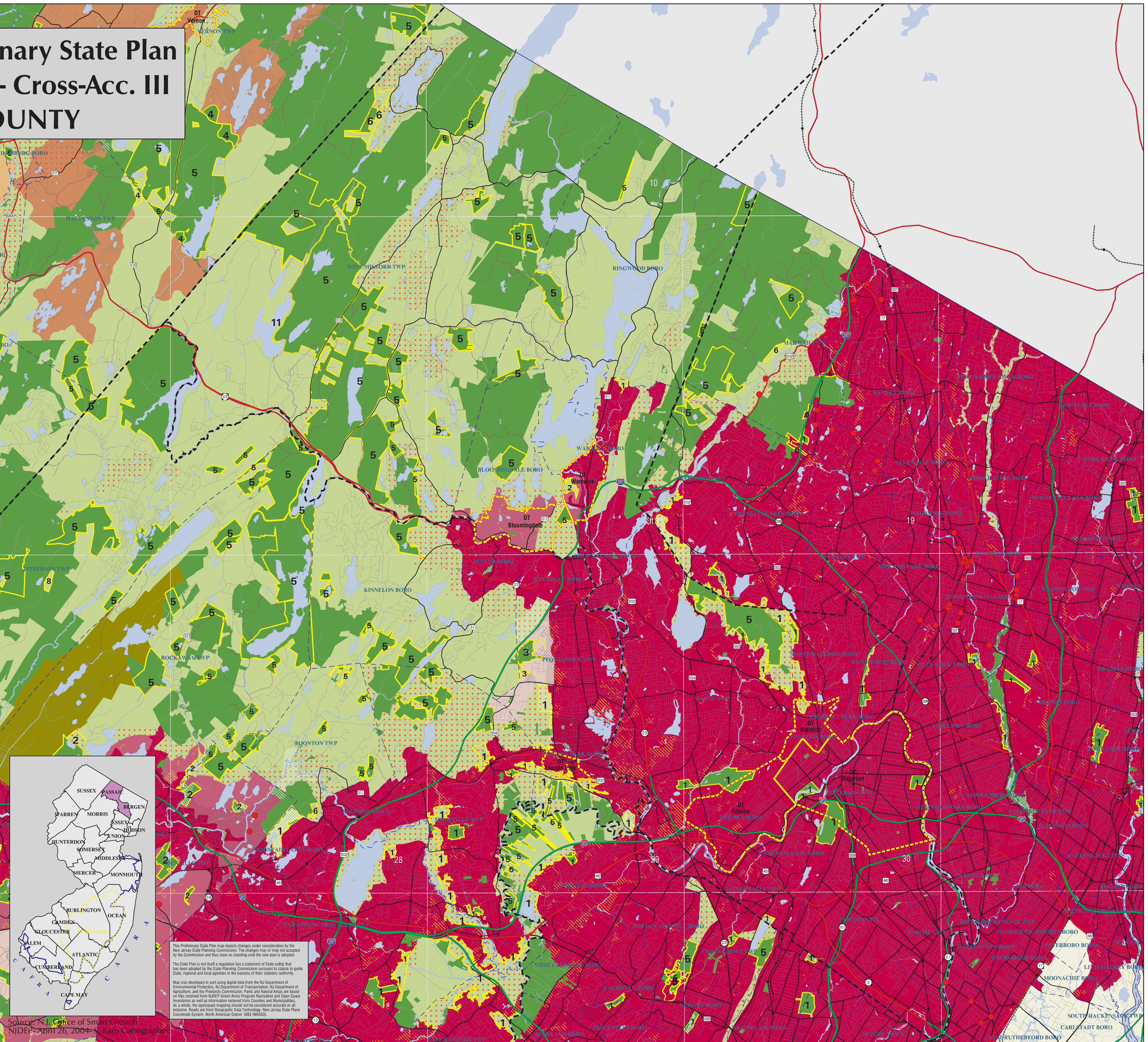
- UC - Urban Center
 - DR - Designated Regional Center
 - DT - Designated Town
 - DV - Designated Village
 - DH - Designated Hamlet
 - Urban Complex
 - Endorsed Plans
 - Center Boundaries
 - Nodes
- Preliminary Changes**
- Planning Area Change
 - Potential Critical Env. Site
 - Deleted Critical Env. Site
 - Maintained Critical Env. Site
 - Previous Planning Area Number
 - Category One Streams

- Wastewater Plans & PA's**
- Unsewered PA1
 - Unsewered PA2
 - Sewered PA3
 - Sewered PA4
 - Sewered PA4b
 - Sewered PA5

- Planning Areas**
- Metropolitan Planning Area (1)
 - Suburban Planning Area (2)
 - Fringe Planning Area (3)
 - Rural Planning Area (4)
 - Rural/Env. Sensitive P. Area (42)
 - Env. Sensitive Planning Area (5)
 - Env. Sens./Barrier Is. P. Area (52)
 - Parks and Natural Areas (6, 7, 8)
 - Hackensack Meadowlands (9)
 - Military Installations (12)
 - Water (11)

- Maintained Critical Env. Site
 - Historic & Cultural Site
- Pinelands Management Areas**
- Pinelands Boundary
 - Regional Growth Area
 - Town
 - Village
 - Rural Development Area
 - Agricultural Production Area
 - Special Agricultural Area
 - Forest & Preservation Area
 - Military & Federal

- Municipal Boundary
- County Boundary
- Primary Highway- Limited Access
- Primary Road
- Secondary Roads
- CAFRA Boundary
- Commuter Rail & Stations



This Preliminary State Plan map depicts changes under consideration by the New Jersey State Planning Commission. The changes may or may not be accepted by the Commission and thus have no standing until the new plan is adopted. The State Plan is not itself a regulation but a statement of State policy that has been adopted by the State Planning Commission pursuant to statute to guide State, regional and local agencies in the exercise of their statutory authority. Map was developed in part using digital data from the NJ Department of Environmental Protection, NJ Department of Transportation, NJ Department of Agriculture, and the Pinelands Commission. Parks and Natural Areas are based on files received from NJDEP Green Acres Program Recreation and Open Space Inventories as well as information received from Counties and Municipalities. As a whole, the appearance mapping should not be considered accurate or all inclusive. Roads are from Geographic Data Technology, New Jersey State Plane Coordinate System, North American Datum 1983 (NAD83).

Source: N.J. Office of Smart Growth
NJDEP, April 26, 2004 - S. Karp Cartographer

