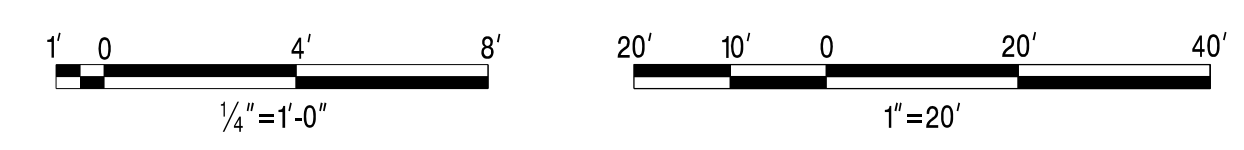
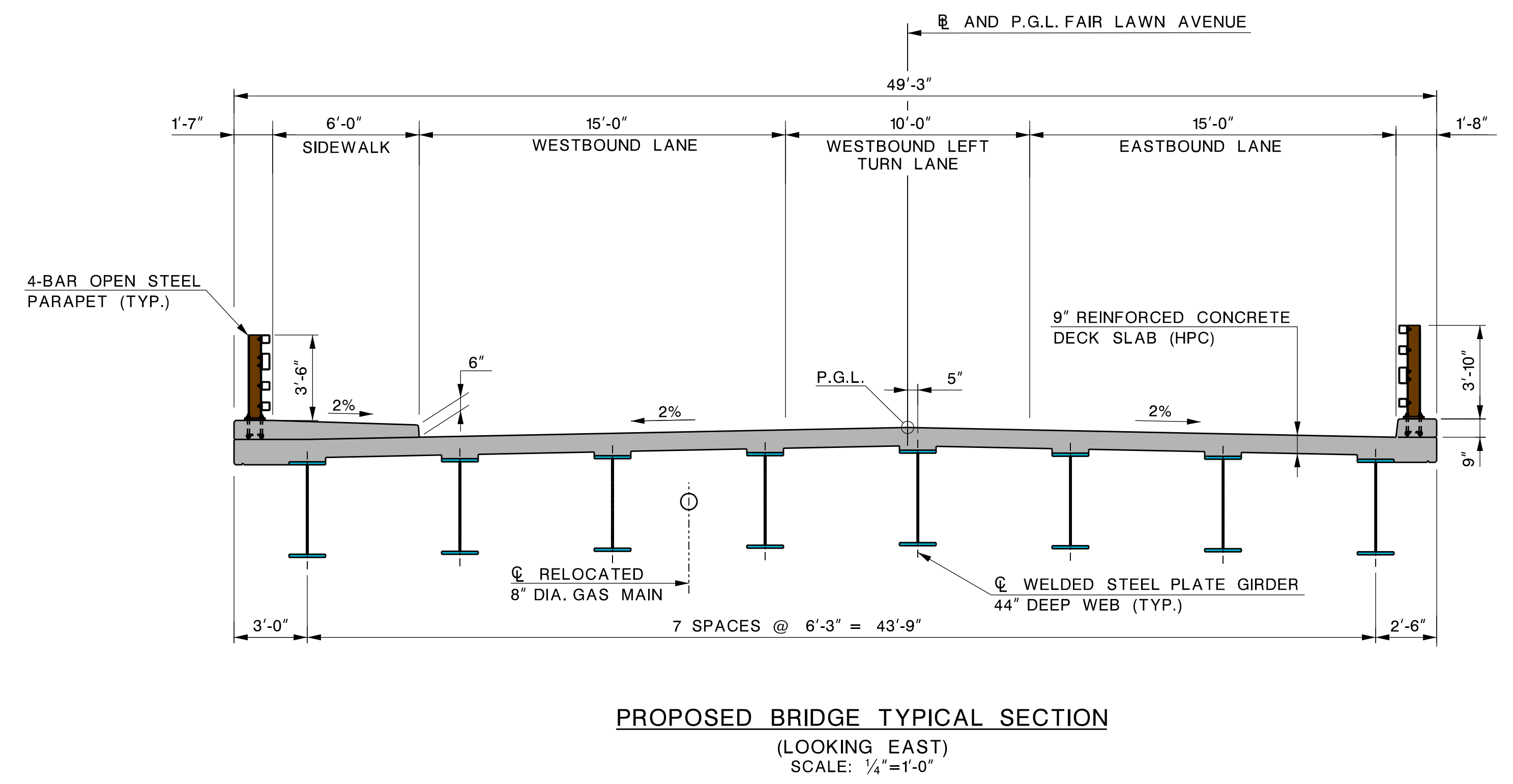
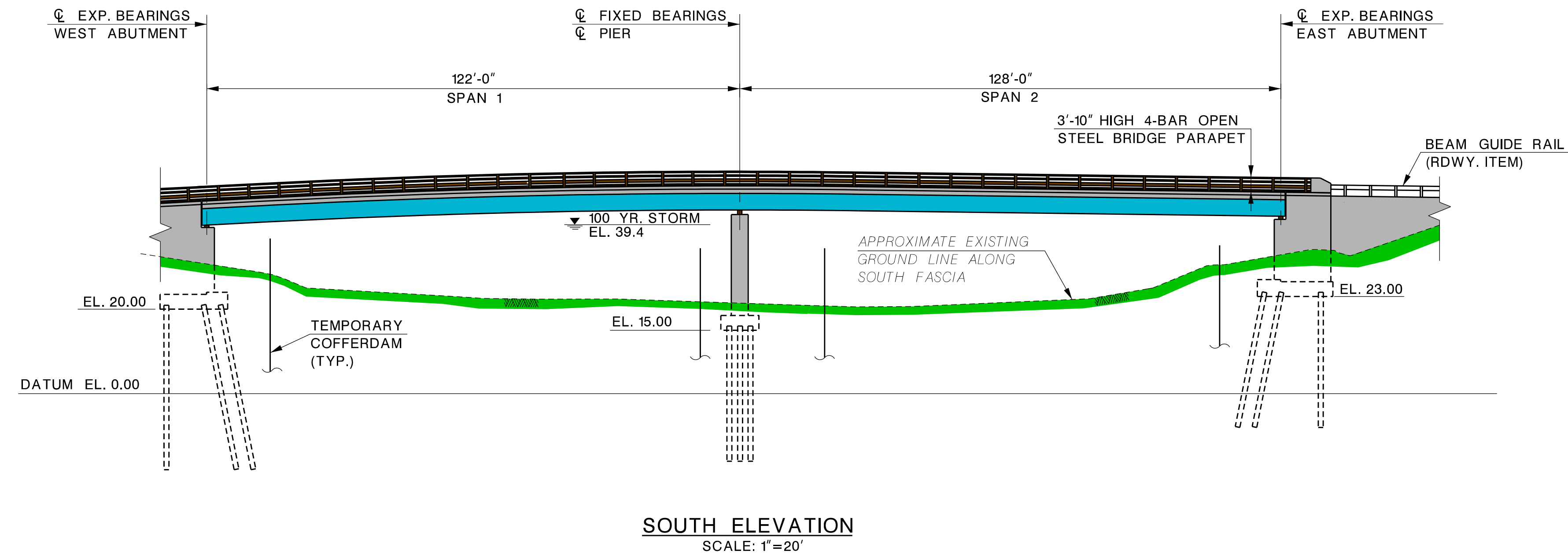
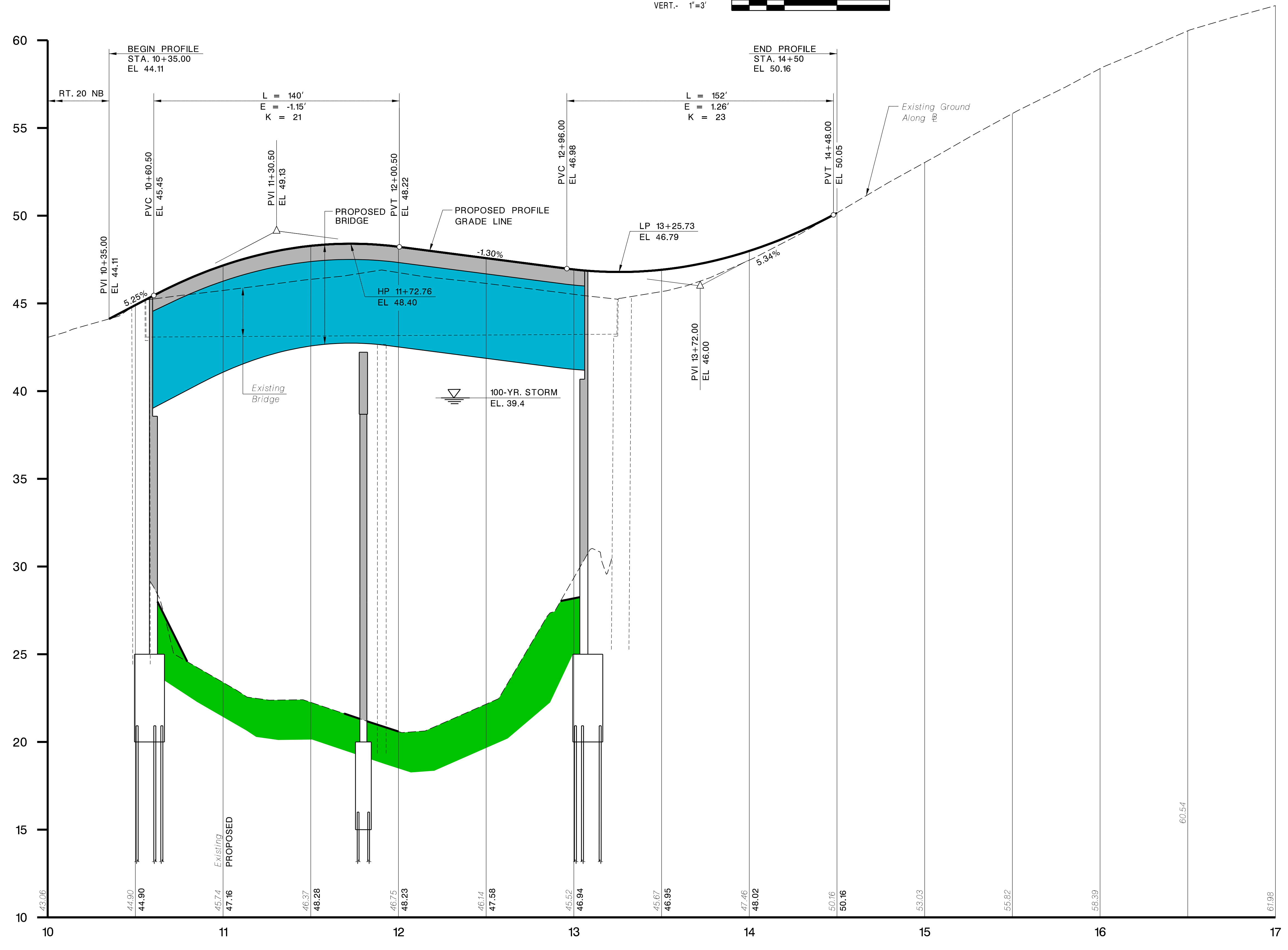
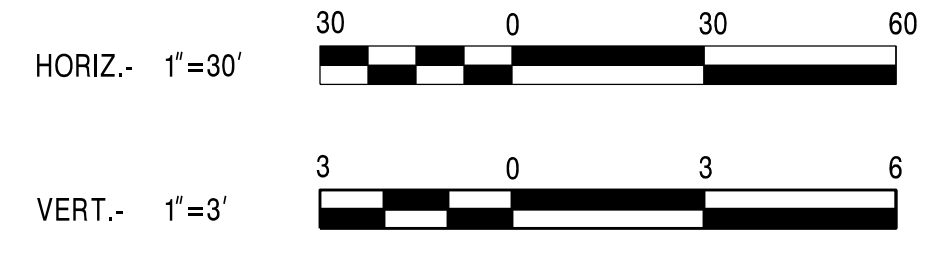


COUNTY OF PASSAIC DEPARTMENT OF ENGINEERING	
REPLACEMENT OF FAIR LAWN AVENUE BRIDGE OVER PASSAIC RIVER STRUCTURE NO. 1600-009	
CITY OF PATERSON	COUNTY OF PASSAIC
BOROUGH OF FAIR LAWN	COUNTY OF BERGEN
PLAN	
Dewberry Engineers Inc. Bloomfield, N.J. COA# 24GA28047600	SCALE: 1"=20' DATE: MARCH 2019



COUNTY OF PASSAIC DEPARTMENT OF ENGINEERING	
REPLACEMENT OF FAIR LAWN AVENUE BRIDGE OVER PASSAIC RIVER STRUCTURE NO. 1600-009	
CITY OF PATERSON	COUNTY OF PASSAIC
BOROUGH OF FAIR LAWN	COUNTY OF BERGEN
BRIDGE TYPICAL SECTION AND ELEVATION	
Dewberry Engineers Inc. Bloomfield, N.J. COA# 24GA28047600	SCALE : AS SHOWN DATE: MARCH 2019



NOTE:
E = DIFFERENCE BETWEEN THE P.V.I. ELEVATION AND THE VERTICAL CURVE ELEVATION AT THE P.V.I. STATION.

COUNTY OF PASSAIC DEPARTMENT OF ENGINEERING

REPLACEMENT OF FAIR LAWN AVENUE
BRIDGE OVER PASSAIC RIVER
STRUCTURE NO. 1600-009

CITY OF PATERSON COUNTY OF PASSAIC
BOROUGH OF FAIR LAWN COUNTY OF BERGEN

PROFILE

Dewberry Engineers Inc. SCALE : 1"=30' H 1"=3' V DATE: MARCH 2019
Bloomfield, N.J. COA# 24GA28047600





DETOUR MAP

NOT TO SCALE

COUNTY OF PASSAIC DEPARTMENT OF ENGINEERING
 REPLACEMENT OF FAIR LAWN AVENUE
 BRIDGE OVER PASSAIC RIVER
 STRUCTURE NO. 1600-009
 CITY OF PATERSON COUNTY OF PASSAIC
 BOROUGH OF FAIR LAWN COUNTY OF BERGEN

TEMPORARY DETOUR ROUTE

Dewberry Engineers Inc. Bloomfield, N.J. COA# 24GA28047600	SCALE : NONE	DATE: MARCH 2019
---	-----------------	------------------

