

Segment

Section 1

Section 2

Municipal Boundaries

Schools

Historic Districts

Existing Open Space

Open Space or Recreation Area

Watershed Lands

Commercial Centers

Within 0.25 Miles of Greenway

Within 0.50 Miles of Greenway

Existing Land Use

Agriculture

Brushland/Shrubland

Commercial/Service

Forest/Wooded Area

Industrial

Miscellaneous

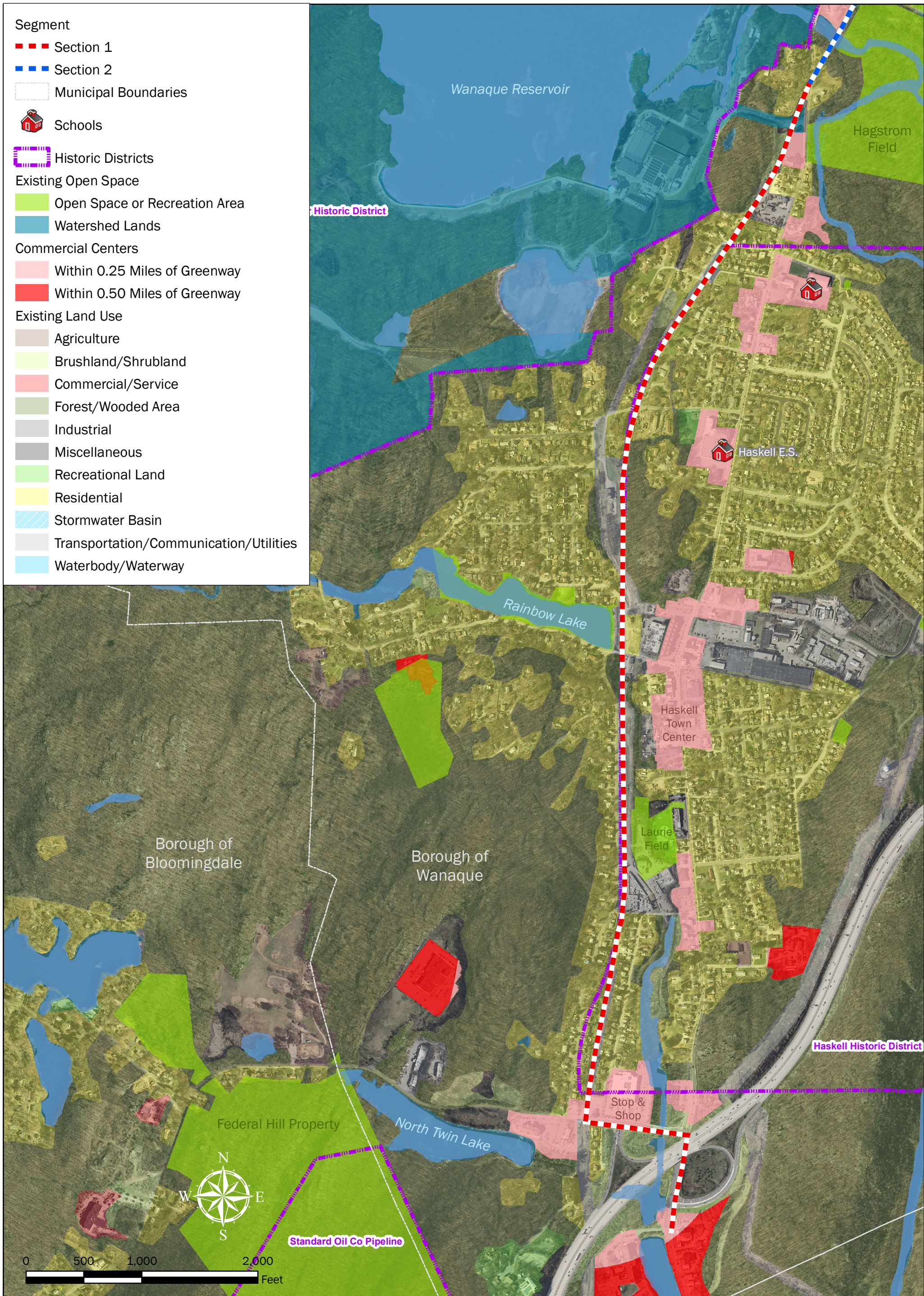
Recreational Land

Residential

Stormwater Basin

Transportation/Communication/Utilities

Waterbody/Waterway



Prepared by: MJM, 08-03-16
 Source: NJDEP, NJDOT, Passaic County
 File Path: K:\PASC\00220\GIS\Projects\Greenway Sections.mxd

Highlands Rail Trail Feasibility Study

PROPOSED GREENWAY ALIGNMENT:

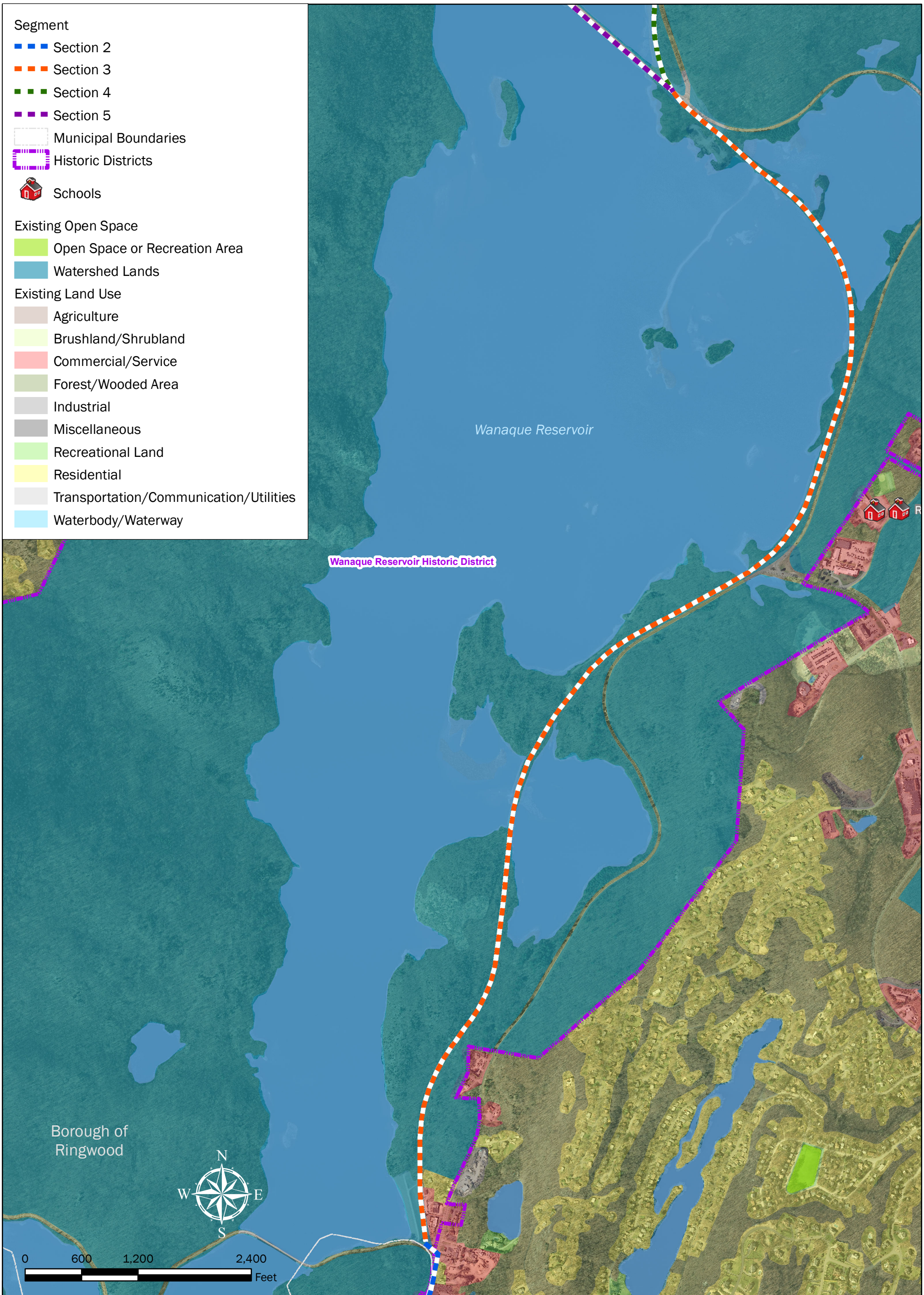
SECTION 1

NOTE: This map was developed using New Jersey Department of Environmental Protection Geographic Information System digital data, but this secondary product has not been verified by NJDEP and is not State-authorized.

- Segment
- Section 2
 - Section 3
 - Section 4
 - Section 5
 - ▭ Municipal Boundaries
 - ▭ Historic Districts
 - 🏠 Schools

- Existing Open Space
- Open Space or Recreation Area
 - Watershed Lands

- Existing Land Use
- Agriculture
 - Brushland/Shrubland
 - Commercial/Service
 - Forest/Wooded Area
 - Industrial
 - Miscellaneous
 - Recreational Land
 - Residential
 - Transportation/Communication/Utilities
 - Waterbody/Waterway



Prepared by: MJM, 08-03-16
 Source: NJDEP, NJDOT, Passaic County
 File Path: K:\PASC\00220\GIS\Projects\Greenway Sections.mxd

Highlands Rail Trail Feasibility Study

PROPOSED GREENWAY ALIGNMENT:

SECTION 3

NOTE: This map was developed using New Jersey Department of Environmental Protection Geographic Information System digital data, but this secondary product has not been verified by NJDEP and is not State-authorized.

- Segment
- Section 1
 - Section 2
 - Section 3
 - Municipal Boundaries
 - Historic Districts
 - Schools

- Existing Open Space
- Open Space or Recreation Area
 - Watershed Lands

- Commercial Centers
- Within 0.25 Miles of Greenway
 - Within 0.50 Miles of Greenway

- Existing Land Use
- Agriculture
 - Brushland/Shrubland
 - Cemetery
 - Commercial/Service
 - Forest/Wooded Area
 - Industrial
 - Miscellaneous
 - Recreational Land
 - Residential
 - Stormwater Basin
 - Transportation/Communication/Utilities
 - Waterbody/Waterway



Wanaque Reservoir

Wanaque Reservoir Historic District

Memorial Park

Addis Park

Midvale School

Wanaque E.S.

Lakeland Regional High School

Hagstrom Field



0 500 1,000 2,000 Feet



Prepared by: MJM, 08-03-16
 Source: NJDEP, NJDOT, Passaic County
 File Path: K:\PASC\00220\GIS\Projects\Greenway Sections.mxd

Highlands Rail Trail Feasibility Study

PROPOSED GREENWAY ALIGNMENT:

SECTION 2

NOTE: This map was developed using New Jersey Department of Environmental Protection Geographic Information System digital data, but this secondary product has not been verified by NJDEP and is not State-authorized.