



The Train is Coming!



Who is Involved?

- New Jersey Transit
- Passaic County, City & Ward Leadership
- Community Organizers
- CMX
- Brown & Keener
- Stump / Hausman



Departures

- Transit - What is planned?
- Outcomes - What might “change” look like?
- Criteria - What is important to residents?
- Participation - How to get involved...

Transit - What is planned?

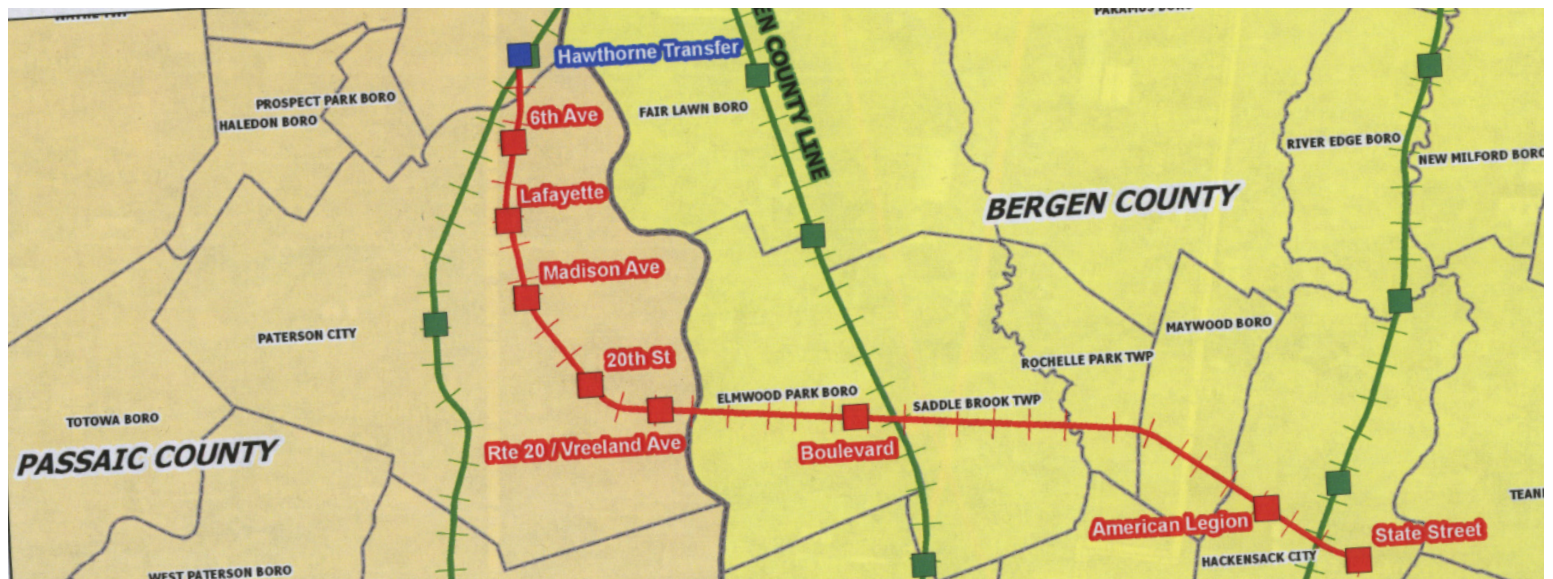
Transit

- NJ Transit Commuter Rail Line
 - Service every 15-30 minutes
 - Connections to Manhattan and Newark via the Main Line Transfer Station at Hawthorne

Outcomes

Criteria

Participation



Transit - What is planned?

Transit

- 5 new stations in Paterson:

- Vreeland Avenue

- 20th Avenue

Outcomes

- Broadway / Madison Avenue**

- Lafayette Street

- 6th Avenue

Criteria

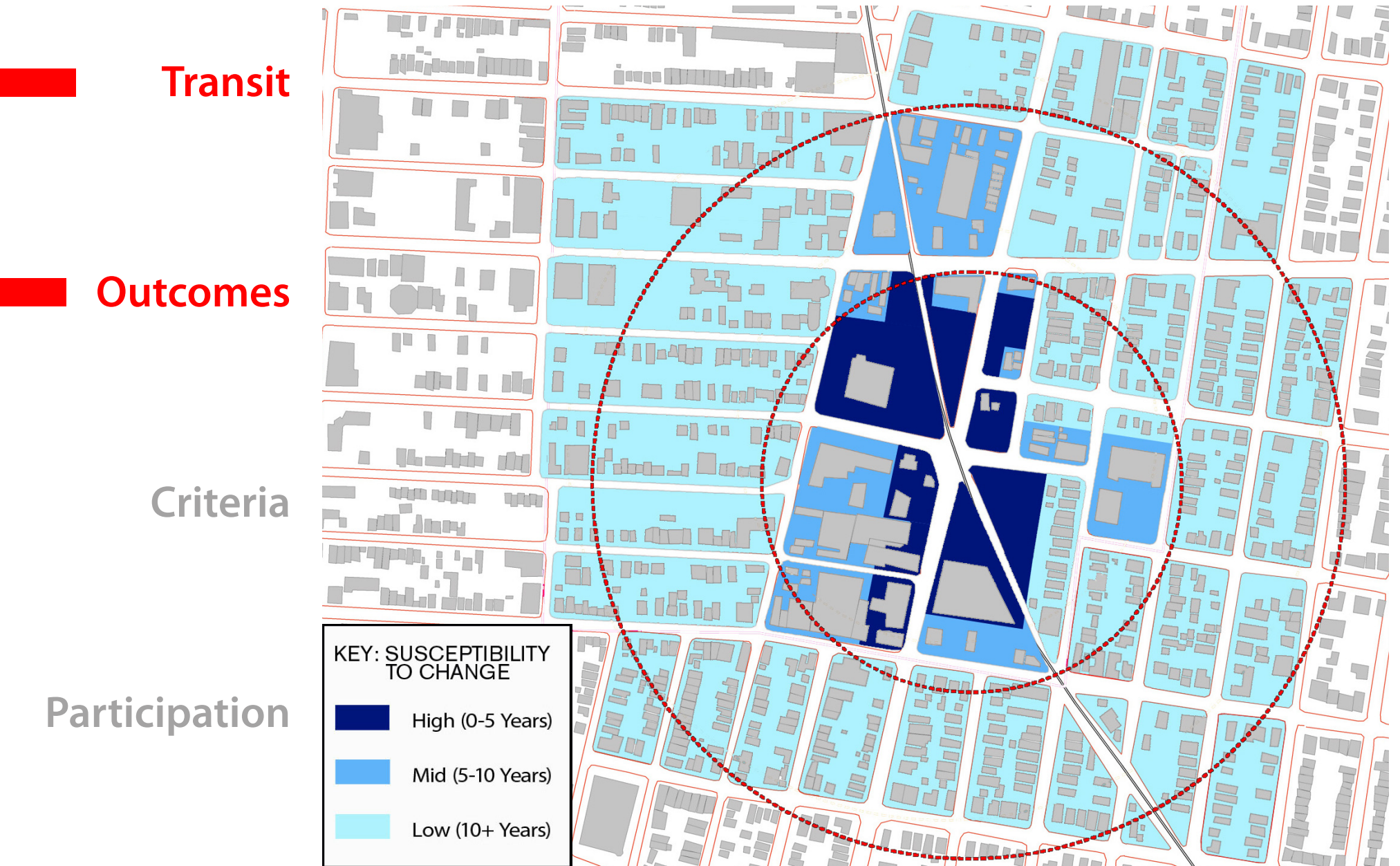
- Other stations located in:

- Elmwood Park

- Hackensack

Participation

Where might additional changes happen?



What might “change” look like?

Transit

 Outcomes

Criteria

Participation



What might “change” look like?

Transit

Outcomes

Criteria

Participation



What might “change” look like?

Transit

Outcomes

Criteria

Participation



What might “change” look like?

Transit

Outcomes

Criteria

Participation



What might “change” look like?

Transit

Outcomes

Criteria

Participation



What might “change” look like?

Transit

Outcomes

Criteria



Participation

What might “change” look like?

Transit

Outcomes

Criteria

Participation



What has happened elsewhere?

Transit

- Regional Case Studies

- Rutherford

- Jersey City

- Camden**

- Metuchen

- South Amboy

- South Orange

Outcomes

Criteria

Participation



What has happened elsewhere?

Transit • Rutherford Station Square

-Station Area Improved 2000-2001

-Renovated Station has acted as focal point for nearby infill development, including HQ for Regional Bank and new Apartments

Outcomes

Criteria



Participation

What has happened elsewhere?

- Transit
- Jersey City (Hudson-Bergen Light Rail)
 - **Ridership** has increased by almost **50%** due to **increased access** to **jobs** and **recreation**
 - Transit stations are centers for new retail and residential development

Outcomes

Criteria

Participation



What has happened elsewhere?

Transit • Camden, NJ

-Since the initiation of the **River LINE**, it has become an **attractive alternative for city dwellers** who may not own a car or who don't want to own a car.

Outcomes

Criteria



Participation

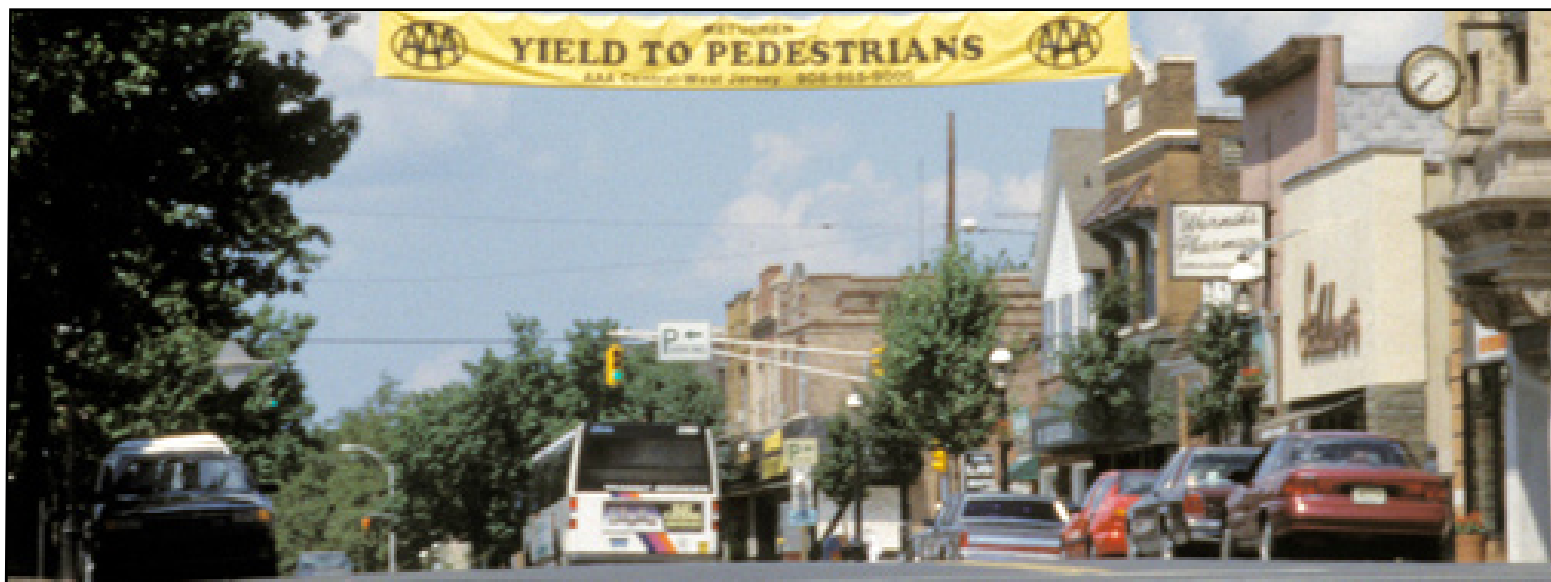
What has happened elsewhere?

Transit

- Transit Villages in New Jersey suburbs: Metuchen, South Amboy and South Orange
 - Public opinion surveys show that residents think **new Transit-Oriented** development in their towns has **increased attractiveness and walkability**. They also appreciate the better restaurant options, shopping, and safety.

Outcomes

Criteria



Participation

What has happened elsewhere?

Transit

- National Case Studies
 - Fruitvale, Ca.
 - Portland, Or.**
 - Winchester, Va.
 - Raleigh
 - Chicago
 - St. Louis

Outcomes

Criteria

Participation



What has happened elsewhere?

Transit

- Fruitvale, CA

- The village is a lively center 24/7 with retail, restaurants, residences, a health clinic, community gathering spaces, a farmers market, a public library, and a seniors' center

Outcomes

Criteria

Participation



What has happened elsewhere?

- Transit
- Portland Westside Station Areas
 - Station Areas Improved 1992-1998
 - \$505 million of development has been built or approved within one-half mile of Westside light rail stations.

Outcomes

Criteria



Participation

What has happened elsewhere?

Transit

- Winchester, VA

- In 2000, 80% of residents used this service
- From 1996 to 2006, the average annual income per resident jumped 300%

Outcomes

Criteria



Participation

What has happened elsewhere?

Transit •Raleigh-Durham Triangle Area

- Community groups involved in and educated about the new transit development
- With \$800,000 of the project's budget, citizens created a public art initiative, adding local art to the station areas

Outcomes

Criteria

Participation



What has happened elsewhere?

Transit

- Chicago - Bethel Center

- Bethel Center was the catalyst for neighborhood revitalization and an anchor for future development, providing easy access and more jobs

Outcomes

Criteria



Participation

What has happened elsewhere?

Transit

- East St. Louis, Ill
 - Emerson Park Station spurred new housing and community development such as a Boys and Girls Club
 - The station **increased access to jobs** elsewhere in the region

Outcomes

Criteria



Participation

What is important to us?

Transit

- Safety ?
- Economic Opportunity ?
- Conservation ?
- Preservation ?
- Design ?

Outcomes

 Criteria

Participation

...and how can we express our concerns?

Participation

- Transit
- Survey
 - Community Visioning Event

- Outcomes
- “Trading Cards”

Criteria



■ Participation

Participation - Trading Cards

Transit

Is this important for the Station Area?
¿es importante para el área de la estación de tren?

NO
(NO)

YES
(SI)

Outcomes

If "YES," then how important is it?
(¿Si "SÍ," entonces que importante es?)

1 ← **2** — **3** — **4** → **5**
Not very important (No muy importante) *Very important* (Muy importante)

Criteria

Comments *(Comentarios)*: _____

Participation - Trading Cards

Transit

Is this important for the Station Area?
¿es importante para el área de la estación de tren?

NO
(NO)

YES
(SI)

Outcomes

If "YES," then how important is it?
(¿Si "SÍ," entonces que importante es?)

1 ← **2** — **3** — **4** → **5**
Not very important (No muy importante) *Very important (Muy importante)*

Criteria

Comments *(Comentarios)*: _____

Participation - Trading Cards

Transit

Is this important for the Station Area?
¿es importante para el área de la estación de tren?

NO
(NO)

YES
(SI)

Outcomes

If "YES," then how important is it?
(¿Si "SÍ," entonces que importante es?)

1 ← **2** — **3** — **4** → **5**
Not very important (No muy importante) *Very important (Muy importante)*

Criteria

Comments *(Comentarios)*: _____

Participation - Trading Cards

Transit

Is this important for the Station Area?
¿es importante para el área de la estación de tren?

NO
(NO)

YES
(SI)

Outcomes

If "YES," then how important is it?
(¿Si "SÍ," entonces que importante es?)

1 ← **2** — **3** — **4** → **5**
Not very important (No muy importante) *Very important (Muy importante)*

Criteria

Comments (*Comentarios*): *This type of building would be a good addition to the area, as long as it was only allowed around the station and had a mix of shops.*

■ Participation

Participation - Trading Cards

Transit

Is this important for the Station Area?
¿es importante para el área de la estación de tren?

NO
(NO)

YES
(SI)

Outcomes

If "YES," then how important is it?
(¿Si "SÍ," entonces que importante es?)

1 ← **2** — **3** — **4** → **5**
Not very important (No muy importante) Very important (Muy importante)

Criteria

Comments (Comentarios): *This type of building would be a good addition to the area, as long as it was only allowed around the station and had a mix of shops. I like that it is tall, but not too tall.*

■ Participation

Participation - Trading Cards

Transit

Oh, and the apartments should have balconies!

Outcomes

Is this important for the Station Area?
¿es importante para el área de la estación de tren?

NO
(NO)

YES
(SI)

If "YES," then how important is it?
(¿Si "SÍ," entonces que importante es?)

1

2

3

4

5

Not very important
(No muy importante)

Very important
(Muy importante)

Criteria

Comments (Comentarios): *This type of building*

would be a good addition to the area,

as long as it was only allowed around

the station and had a mix of shops. I

like that it is tall, but not too tall.

...and the building doesn't look too big...

It would be nice if there were local merchants in the ground floor space.

Offices might be nice above some shops, too... can we do that?

■ Participation

1



Rail Station Retail
(Tiendas en la estación de tren)



New Buildings Near Rail Station
(Edificios nuevos cerca de la estación de tren)



Apartments Over-The-Shop
(Departamentos sobre las tiendas)



Screenprinted Signs
(Letreros gráficos de alta resolución)



Ground Floor Shop Windows
(*Ventanas en las tiendas de la planta baja*)



Night Lighting
(*Alumbrado nocturno*)



Traditional Building Materials
(*Materiales de construcción tradicionales*)



Buildings Set Back From Street
(Edificios lejos de la calle)



Restore Historic Buildings
(*Restauración de edificios históricos*)



Contemporary Building Appearance
(Aspecto de un edificio nuevo)



Store Type - Apparel
(*Clase de tienda - prendas*)



Store Type - Hardware
(Clase de tienda - ferretería)



Store Type - Medical Office
(Clase de tienda - oficina médica)



Store Type - Other
(Clase de tienda - otro)



Clearly-Marked Crosswalks
(Pasos de peatón claramente marcados)



Wayfinding Signage Guidelines

(Pautas para señalización wayfinding)



Street Trees
(*Árboles en la acera*)



Bike Lanes / Access
(*Carriles / Acceso para bici*)



Sidewalk Dining
(*Restaurantes en la acera*)



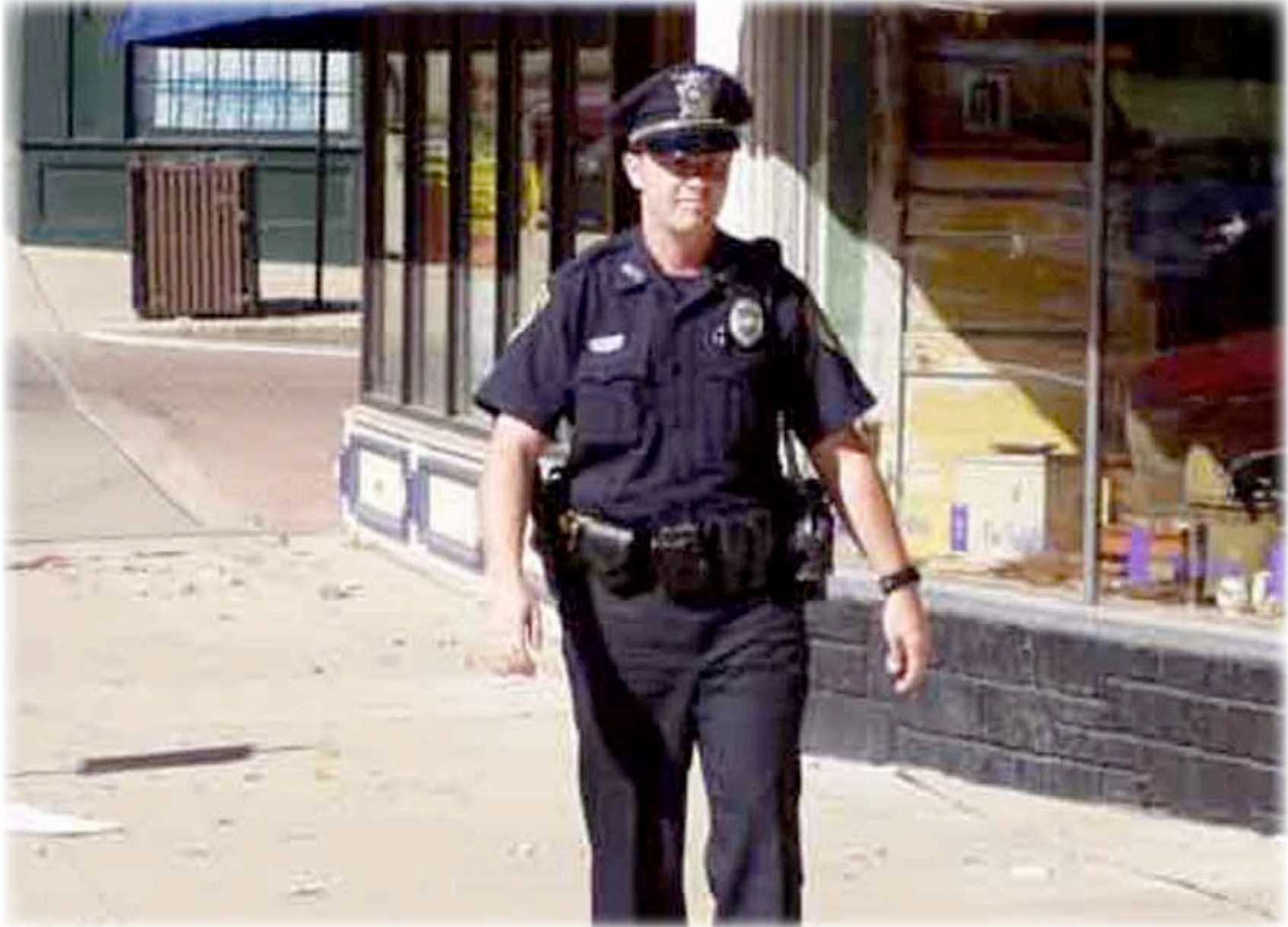
Multi-Lingual Signs
(*Letreros multilingües*)



Traffic
(Tráfico)



On-street Parking
(*Estacionamiento en la calle*)



Policeman Walking
(*Policía caminando*)



Security Gates
(*Portones de seguridad*)



Parking Around Station
(*Estacionamiento alrededor de la estación*)



Parking In Back of Buildings
(Estacionamiento detrás de los edificios)



Later Hours of Operation
(Horas de operación prolongadas)



Bike Parking
(*Estacionamiento de bici*)



Noise
(*Ruido*)



Pedestrian Flow Around Station
(Peatones alrededor de la estación)



Coordinated Transit
(Transito coordinado)



Public Art in Station
(Arte público en la estación)