



# 2022 DIRECTORY

Published by the  
Passaic County Board of County Commissioners

Passaic County Administration Building  
401 Grand Street • Paterson, New Jersey 07505



[passaiccountynj.org](http://passaiccountynj.org)



[@passaiccountynj](https://www.instagram.com/passaiccountynj)



[facebook.com/passaiccountynj](https://www.facebook.com/passaiccountynj)



[@passaic\\_county](https://twitter.com/passaic_county)



[youtube.com/passaiccountynj](https://www.youtube.com/passaiccountynj)

# ADMINISTRATION BUILDING

---

401 Grand Street, Paterson, New Jersey 07505

Hours: 8:30 a.m. to 4:30 p.m.

Monday through Friday

(973) 881-4000



Special thanks to Passaic County Technical Institute.

# TABLE OF CONTENTS

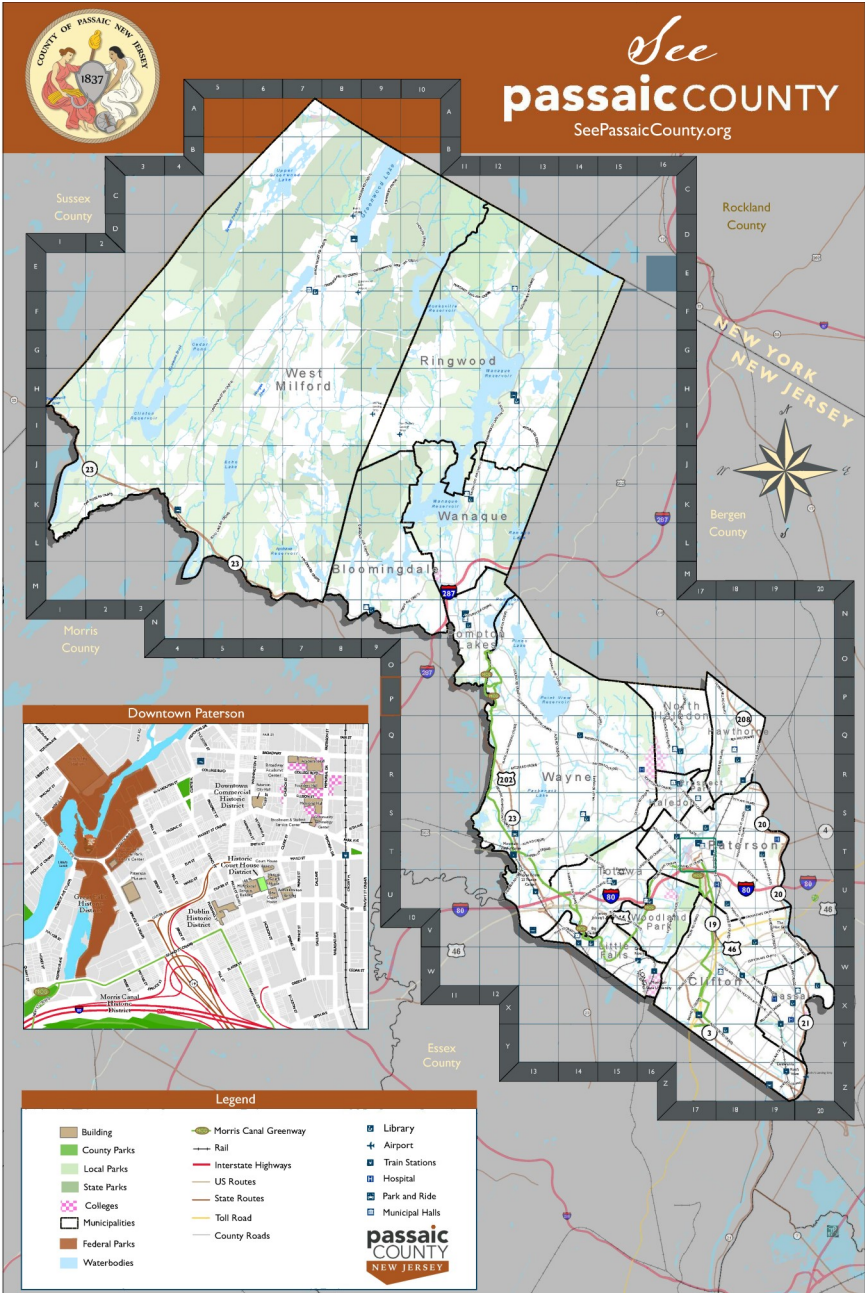
---

Map of Passaic County .....	4
Government Officials.....	5
The Role of the County Commissioners.....	6
County Commissioner Director's Message .....	8
2021 Board of County Commissioners .....	9
County Commissioner Standing Committees .....	16
Administration and Constitutional Officers .....	17
Departments and Affiliated Offices.....	18
Superior Court .....	56
Federal Officials .....	60
State Officials .....	62
Municipalities.....	65
Boards/Agencies/Commissions .....	82
Parks and Recreational Facilities.....	91
Historic Attractions .....	96
History of Passaic County .....	104

# MAP OF PASSAIC COUNTY

Total Population: 503,637

Size: 197.10 square miles



# GOVERNMENT OFFICIALS

---



**Joseph R. Biden, Jr.**  
President of the United States  
Term Expires: 1-20-2025



**Robert Menendez**  
U.S. Senator for New Jersey  
Term Expires: 1-3-2025



**Cory Booker**  
U.S. Senator for New Jersey  
Term Expires: 1-3-2027



**Phil Murphy**  
New Jersey Governor  
Term Expires: 1-18-2026

# ROLE OF THE COUNTY COMMISSIONERS

---



County government serves as the middle layer of government between federal and state governments and local municipalities. Passaic County is governed by a seven-member Board of County Commissioners.

New Jersey has 21 counties, and no two counties are exactly the same. Counties' demographic, geographic, and economic characteristics dictate how they deliver services to their communities. The organization and structure of counties are tailored to fit their communities' needs and characteristics.

In Passaic County's commission form of government, the County Commissioners discharge both the legislative and executive responsibilities of government. The seven-member board is headed by a director who is selected to serve a one-year term at the Board's annual reorganization meeting held in January. Each County Commissioner is elected at-large for a staggered 3-year term.

The Passaic County Commissioners are responsible for an annual budget of about \$436 million serving 524,000+ residents in sixteen municipalities.

# ROLE OF THE COUNTY COMMISSIONERS

---

The Passaic County Commissioners support and are responsible for:

- Maintenance of 533 miles of County roads and 358 bridges.
- 13 County Parks with over 4,000 acres of open space.
- The Passaic County Sheriff's Office, with the responsibility of public safety, Courthouse security, as well as the Passaic County Prosecutor's Office.
- Preakness Healthcare Center, a 406-bed skilled nursing facility providing sub-acute, long-term, respite and hospice care.
- Passaic County Community College, serving 15,000 students in Northern New Jersey.
- Passaic County Technical-Vocational Schools, a high school serving 3,800 students.
- Social Service Programs for the elderly, the disadvantaged, and people with disabilities.
- Preakness Valley Golf Course, a 36-hole public state-of-the-art golf facility.
- Other services provided to County residents, such as mental health and anti-addiction services, veterans' programs, heating assistance and more.

# DIRECTOR'S MESSAGE

---

Dear Neighbor,

Although the past year has been challenging, it is with great optimism that the Passaic County Commissioners welcome 2022.

The 2021 Passaic County Directory contains detailed information on local, county, state and federal governments, including relevant contact information for the numerous programs and services available to you as a resident of Passaic County. In addition to this county directory, information about COVID-19, re-opening plans, and other county information can be found on our website [www.passaiccountynj.org](http://www.passaiccountynj.org) and social media pages on Facebook, Twitter and Instagram.

In this past year, Passaic County continued to organize COVID-19 aid and resources and expand our services. Our Human Services Department launched the County's Hope One Van, bringing hope on the path to recovery for our residents, continued our rental assistance program via our Impact Passaic Initiative, and made finding resources easily accessible for our residents in Passaic County through our [help.impactpassaic.com](http://help.impactpassaic.com) launch. Moreover, our Health Department continued to stay ahead of vaccination rates since the launch of the COVID-19 vaccine last year.

Our commitment to supporting our residents means in addition to providing COVID-19 resources, we will continue to invest in infrastructure, develop our County parks and historic sites, expand access to enhanced services for the county's at-risk populations, and afford access to academic opportunities at Passaic County Technical-Vocational Schools and Passaic County Community College.

For the fourth consecutive year in a row, the Board of County Commissioners adopted the 2022 budget with no increase to the tax levy. The budget reflects the priorities of current tax relief for its residents while providing future generations with financial stability by utilizing conservative budget practices. In addition, Passaic County's credit rating is the highest it has ever been. Your Passaic County Commissioners are proud of what has been accomplished thus far and anticipate growing our scope of services in the year ahead while remaining fiscally responsible.

Despite the struggles and challenges faced in the past year, we stand united and will continue to persevere. We will continue our commitment to maintain the well-being of all our residents and making the county the best it can be.

Sincerely,  
Bruce James  
Passaic County Commissioner Director



# PASSAIC COUNTY COMMISSIONERS

---



**Bruce James**

Director

Term Expires: 12-31-2023

Office Phone: (973) 225-3145

Email: [bjames@passaiccountynj.org](mailto:bjames@passaiccountynj.org)

**COUNTY COMMISSIONER BRUCE JAMES** was elected to the Board of County Commissioners in November 2005. County Commissioner James has dedicated much of his life to helping the residents of Passaic County as an employee of the Passaic County Board of Social Services, where he worked as a caseworker and then supervisor. He left that board once he was elected to serve as a full-time County Commissioner.

County Commissioner James was born to parents of both Irish and Italian descent; his maternal grandfather was an Italian immigrant who came to this country at the age of 17 to start a new life for himself and his future family. County Commissioner James has been a resident of Clifton for over 30 years.

County Commissioner James understands the needs of Passaic County residents. He has served as the longtime President of his labor organization, where he was able to balance out the needs of the employees with a conservative eye on the needs of taxpayers of the county.

He attended William Paterson College where he majored in Political Science and Philosophy. He was named to the Who's Who in American Colleges and Universities and served as President of the Student Government. County Commissioner James was a past member of the Board of Trustees of the Greater Paterson Opportunities Industrialization Center and served as Fundraising Chairman of St. Joseph's Hospital Early Intervention Program and the Passaic County Food Bank. He is a current commissioner for the NJ State Highlands Water Protection and Planning Council.

County Commissioner James recognizes the importance and is a strong advocate for stable taxes, maintaining roads and bridges, preserving open space, and providing quality education at the county technical high school and Passaic Community College, and provides continued services for seniors, veterans, those with special needs and the most vulnerable citizens of Passaic County.

# PASSAIC COUNTY COMMISSIONERS

---



## Cassandra "Sandi" Lazzara

Deputy Director

Chair of Planning & Economic  
Development Committee

Term Expires: 12-31-2024

Office Phone: (973) 881-7896

Email: [clazzara@passaiccountynj.org](mailto:clazzara@passaiccountynj.org)

**COUNTY COMMISSIONER CASSANDRA "SANDI" LAZZARA** was elected to the Board in 2016. A Paterson native and lifelong Passaic County resident, her commitment and desire to serve the residents of Passaic County runs deep. She was raised to embody the spirit of a public servant and to serve others with integrity, competency and loyalty.

As a County Commissioner, County Commissioner Lazzara has served as Chair of the Passaic County Human Services Committee, a committee that provides services to the county's most vulnerable. Additionally, she served as co-chair of the Planning and Economic Committee, which includes the county's Economic Development Division, Public Housing Agency and County Historian. Assignments also included liaison to the Passaic County Open Space and Farmland Preservation Advisory Committee, the Board of School Estimate and the Passaic County Planning Board.

Current committees on which County Commissioner Lazzara serves include Health & Human Services, Administration & Finance and Budget. She serves as a representative to the Passaic County Youth Services Commission and is afforded the opportunity to collaborate with a team of professionals who are determined to provide youth with the services and support necessary to help them realize their full potential. Other committees County Commissioner Lazzara has served on include Law & Public Safety and Public Works.

As a working mother of two grown sons, Anthony and Joseph, she is aware of how hard it is to make ends meet today. She works closely with the Board of County Commissioners, County Administrator and Passaic County staff to examine every expenditure and ensure that the taxpayers of Passaic County get the most value out of their hard-earned money.

County Commissioner Lazzara has spent over twenty-five years in education promoting the welfare of children, schools, and the community. She holds a B.A. in Human Ecology from Montclair University and an M.Ed. in Administration & Supervision from William Paterson University. County Commissioner Lazzara worked for the Woodland Park Board of Education in multiple capacities, including teaching. Involved with educational issues on the local, county, state and national levels, County Commissioner Lazzara has proven to be a strong advocate for public education. County Commissioner Lazzara knows the value of good government.

# PASSAIC COUNTY COMMISSIONERS

---



## Nicolino Gallo

Term Expires: 12-31-2024

Office Phone: (973) 881-4417

Email: [Ngallo@passaiccountynj.org](mailto:Ngallo@passaiccountynj.org)

**COUNTY COMMISSIONER NICOLINO GALLO** was appointed to the Passaic County Board of County Commissioners at the start of 2022; he serves on the Law & Public Safety Committee.

County Commissioner Gallo first settled in Woodland Park, at the age of five, with his parents Giovanni and Italina Gallo and his siblings Angelina and Michael, in March 1974, after immigrating to the United States from their homeland of Calabria, Italy. Since 2002, Commissioner Gallo has resided in Totowa with his wife Nancy and their three wonderful children.

County Commissioner Gallo's father worked as a machine operator in what was known as "Silk City" textiles fabric coloring factory. His mother also worked as a machine operator making coats in the city of Paterson. Unfortunately, when his mother had an accident at the factory, just a few months after she started, his father had to bear the entire financial burden of the family. Nicolino's father worked construction jobs on Saturdays to bring in extra income for the family. As a result of his mother's financial condition, which required multiple lower back surgeries, Commissioner Gallo and his siblings took on heavy family responsibilities at a young age.

County Commissioner Gallo started college right after high school graduation, but his passion for entrepreneurship led him to change paths and start a business at the age of eighteen (18).

As a longtime resident of Passaic County, County Commissioner Gallo is proud of everything that he has accomplished, a successful business, a beautiful family, and he is honored to have been newly elected as a County Commissioner. County Commissioner Gallo is excited to contribute to Passaic County, which has provided him with such a strong foundation.

# PASSAIC COUNTY COMMISSIONERS

---



## John W. Bartlett, Esq.

Chair of Health & Human Services  
Committee

Term Expires: 12-31-2024

Office Phone: (973) 225-5415

Email: [jbartlett@passaiccountynj.org](mailto:jbartlett@passaiccountynj.org)

**COUNTY COMMISSIONER JOHN W. BARTLETT** was first elected to the Passaic County Board of County Commissioners in 2012. In his years as a County Commissioner, he has served on all of the Board's standing committees. As Passaic County's representative on the North Jersey Transportation Planning Authority, County Commissioner Bartlett helps prioritize and oversee \$2+ billion in annual infrastructure improvements in our region. Since he joined NJTPA, more than \$115 million in federal infrastructure funding has flowed into Passaic County, supporting projects from major road improvements on Routes 46, 3, 23, and 80, to completion of the county's section of the 103-mile Morris Canal Greenway historic site, to safety improvements protecting vehicles, bicyclists, and pedestrians.

From 2013 to 2016, County Commissioner Bartlett served on the Passaic County Board of Social Services. At his initiative, PCBSS launched an effort to make Social Services more accessible to immigrant communities by publishing information about social services for the first time in Arabic, Bengali, and Spanish, as well as English. From 2009 to 2013, County Commissioner Bartlett served as the founding Chairman of the Board of Friends Of Passaic County Parks. Under his leadership, the foundation launched a summer concert series and opportunities for local residents to sponsor memorial benches, trees, plaques, and other commemorations for lost loved ones.

Educated at Harvard Law School, County Commissioner Bartlett is a Partner in Murphy Orlando LLC. He has been recognized with the highest professional peer-review rating, AV-Preeminent, from Martindale-Hubbell, and as one of the *New Jersey Law Journal's* "Forty Under 40" promising young attorneys in 2010. Before law school, County Commissioner Bartlett received a B.A. degree with honors from Brown University and was a Raoul Wallenberg Scholar at the Hebrew University of Jerusalem. He wrote for The Associated Press in Israel, and served as communications director for the national anti-crime organization Fight Crime: Invest in Kids in Washington, D.C. County Commissioner Bartlett lives in Wayne with his wife Dr. Khyati Y. Joshi and their son.

# PASSAIC COUNTY COMMISSIONERS

---



## Theodore "T.J." Best, Jr.

Chair of Public Works  
Committee

Term Expires: 12-31-2023

Office Phone: (973) 225-5427

Email: [tjbest@passaiccountynj.org](mailto:tjbest@passaiccountynj.org)

**COUNTY COMMISSIONER THEODORE "T.J." BEST, JR.** was first elected in 2011, at the time becoming the youngest County Commissioner ever in Passaic County and New Jersey. County Commissioner Best has served twice as Deputy Director, once as Director and on every standing County Commissioner committee in the county. He is committed to improving the quality of life, services and programs for county residents while not adding additional unnecessary burdens to taxpayers.

Born and raised in Paterson, County Commissioner Best got involved in public service at a young age, advocating for funding for recreation and after-school programs as President of Eastside High School's Student Government. County Commissioner Best's civic engagement followed him to Rutgers University where he served as Convener of the Dean's Diversity Advocacy Board, Chairperson of the President's Student Advisory Board, and headed the RU Voting Campaign, Minority Student Recurrent Week, Homecoming and Annual Student Leadership Summit.

Building on his background in public policy, County Commissioner Best moved to Washington, D.C. and served as a staffer for Congressman Bill Pascrell, Jr. where he worked on legislation that led to the creation of the national park at the Paterson Great Falls.

County Commissioner Best returned to Paterson in 2008, purchased a home on the same street he grew up on, and ran for the Paterson Board of Education. He became the youngest Commissioner and then President ever elected to the Board. An advocate for young people, County Commissioner Best has worked as Program Director of The Great Falls Youth Development Center and Advisor for The Paterson Youth Council. After serving for a full term on the Board of Ed., County Commissioner Best returned to Paterson Public Schools as District-wide Anti-Bullying Coordinator and Director of Student Attendance.

A true community servant, County Commissioner Best has been an active board member of the Great Falls National Historic Park Federal Advisory Commission, NJ Association of Counties, North Jersey Transportation Planning Authority, Passaic County Board of Social Services, Passaic County Open Space and Farmland Preservation Advisory Committee, Passaic County History and Tourism Board, Passaic County Youth Services Commission, Passaic County Planning Board, Paterson Habitat for Humanity, Paterson Team HOPE, Paterson NAACP, Paterson Rotary P.M. Club and the Delta Mu Lambda Chapter of Alpha Phi Alpha Fraternity.

County Commissioner Best lives in Paterson with wife Kyona, a teacher at Passaic County Technical Institute, and his two children.

# PASSAIC COUNTY COMMISSIONERS

---



## Terry Duffy

Chair of Law & Public Safety  
Committee

Term Expires: 12-31-2022

Office Phone: (973) 881-4537

Email: [tduffy@passaiccountynj.org](mailto:tduffy@passaiccountynj.org)

**COUNTY COMMISSIONER TERRY DUFFY** was elected to the Passaic County Board of County Commissioners in 2004. He is a lifelong Passaic County resident, who with his wife Tara and their four children: Sean, Ryan, Terrence, and Erin, along with his grandchildren Robert, Madeline, and Peter live in the beautiful up-county community of West Milford.

County Commissioner Duffy attended Don Bosco Preparatory High School in Ramsey and Marist College in Poughkeepsie, NY, where he majored in both business and history. He is a successful small businessman. He owns and operates Duffy's Tavern in the Riverside section of Paterson. County Commissioner Duffy has served in numerous leadership positions with affiliated business and trade associations at the local, county, and state level. County Commissioner Duffy also serves as the Regional Director of the NJ Licensed Beverage Association.

County Commissioner Duffy is an active supporter of Passaic County's law and public safety communities. In 1996, he was honored by the Paterson Policeman's Benevolent Association, Local 1 as their Silver Card Holder Award winner. The Silver Card Holder Award is the highest award that can be given to a civilian by the Policeman's Benevolent Association. He is also a member of the Knights of Columbus, 2nd degree, as well as, charter member of the Paterson Chapter of the Blue Knights Organization.

County Commissioner Duffy's commitment to his community is most evident in his work on behalf of Passaic County's children. County Commissioner Duffy has served as the volunteer athletic director and as basketball coach at Our Lady Queen of Peace in West Milford and was honored as the Coach of the Year. He is an annual sponsor of little league teams in both Paterson and West Milford.

As a successful businessman, County Commissioner Duffy knows the importance of keeping our county's economic base strong and vital. Two of his goals are to continue the county's current economic development programs and increase opportunities for businesses and families to flourish within our county. His four children all contribute to Passaic County as well. His son Sean is a Paterson fireman, Ryan and Terrence are both Paterson policemen, and his daughter Erin is studying to get her Masters in Occupational Therapy.

# PASSAIC COUNTY COMMISSIONERS

---



## Pasquale "Pat" Lepore

Chair of Administration & Finance  
and Budget Committees

Term Expires: 12-31-2022

Office Phone: (973) 881-4536

Email: [plepore@passaiccountynj.org](mailto:plepore@passaiccountynj.org)

**COUNTY COMMISSIONER PASQUALE "PAT" LEPORE** was first elected to the Board in 2004. His past service includes four terms as the Mayor of Woodland Park and a term on the Borough Council. He and his wife Linda are proud to call the Borough of Woodland Park home. They live there along with their son Robert, his wife Rebecca, and two grandchildren. Robert is a veteran of United States Marine Corps and continues his service to his community and country as a police officer in Woodland Park. As County Commissioner Lepore very proudly commented at his swearing-in ceremony: "My son's public service far exceeds my own."

Upon election to the Board of County Commissioners, he retired as a Sales Representative for the Entenmann's Division of George Weston Bakeries. He remains a member of the International Brotherhood of Teamsters (IBT) Union Local 802 located in Long Island City, New York. County Commissioner Lepore's commitment to Passaic County has been recognized by many public, private and civic organizations. This includes service on the Alfred H. Baumann Library Board, Office of Emergency Management, West Paterson Boys & Girls Club, Passaic County Board of Social Services, and Camp Hope Commission.

Throughout his tenure on the Board of County Commissioners, County Commissioner Lepore has been elected director of the board three times and has also served on every standing Passaic County committee including the Passaic County Technical-Vocational Schools and the Passaic County Community College Boards of School Estimate.

County Commissioner Lepore helped spearhead fiscal initiatives and has served as budget chair for the past eleven years, resulting in ten credit upgrades to Passaic County's bond ratings from Moody's Financial Services, an independent credit rating agency which has given the county its highest bond rating in its history. This has resulted in hundreds of thousands of dollars in savings on interest payments and debt service for Passaic County taxpayers. County Commissioner Lepore's fiscal stewardship has allowed our county government to rein in costs, increase efficiencies, and more effectively share services.

# COUNTY COMMISSIONER COMMITTEES

---

## ADMINISTRATION AND FINANCE

Pat Lepore, Chair  
John Bartlett  
Bruce James

## BUDGET

Pat Lepore, Chair  
Sandi Lazzara  
Bruce James

## HEALTH AND HUMAN SERVICES

John Bartlett, Chair  
Sandi Lazzara  
Bruce James

## LAW AND PUBLIC SAFETY

Terry Duffy, Chair  
TJ Best  
Nicolino Gallo

## PLANNING AND ECONOMIC DEVELOPMENT

Sandi Lazzara, Chair  
John Bartlett  
Bruce James

## PUBLIC WORKS

T.J. Best, Chair  
Terry Duffy  
Pat Lepore



## ADMINISTRATION

---



**Anthony J. De Nova III**  
County Administrator  
Term Expires: 12-31-2023



**Louis E. Imhof III**  
Clerk to Board  
Term Expires: 7-15-2025



**Matthew P. Jordan, Esq.**  
County Counsel  
Term Expires: 2-26-2025

## CONSTITUTIONAL OFFICERS

---



**Richard H. Berdnik**  
Passaic County Sheriff  
Term Expires: 12-31-2022



**Camelia M. Valdes, Esq., LL.M**  
Passaic County Prosecutor  
Term Expires: 6-26-2025



**Zoila Cassanova, Esq,**  
Passaic County Surrogate  
Term Expires: 12-31-2024



**Danielle Ireland-Imhof**  
Passaic County Clerk  
Term Expires: 12-31-2023

# DEPARTMENTS & AFFILIATED OFFICES

---

COUNTY ADMINISTRATOR.....	19
County Adjuster, Public Information Officer	
BOARD OF ELECTIONS .....	20
BUILDINGS AND GROUNDS .....	21
COUNTY CLERK .....	22
Satellite Office, Elections, Registry	
CLERK TO THE BOARD.....	24
COUNTY COUNSEL.....	24
CULTURAL AND HISTORIC AFFAIRS.....	25
COUNTY EDUCATIONAL FACILITIES.....	26
ELECTIONS, SUPERINTENDENT OF .....	28
ENGINEERING .....	28
FINANCE DEPARTMENT .....	29
Insurance Office, Treasurer	
HEALTH DEPARTMENT .....	30
Environmental Health, Mosquito Control, Natural Resources & Recycling	
HUMAN RESOURCES.....	32
HUMAN SERVICES .....	33
Addiction Services & Mental Health, Community Outreach & Family Services, Workforce Development Board (WDB)	
PARKS AND RECREATION.....	34
Golf Course, Rutgers Cooperative Extension	
PLANNING AND ECONOMIC DEVELOPMENT.....	38
Economic Development, Public Housing Agency, County Historian	
PREAKNESS HEALTHCARE CENTER.....	40
PROSECUTOR'S OFFICE.....	42
PUBLIC SAFETY.....	44
Emergency Management, Police Academy, Weights & Measures	
PURCHASING AND PROCUREMENT .....	46
PASSAIC COUNTY ONE STOP CAREER CENTER.....	47
ROADS DIVISION.....	48
SENIOR, DISABILITY SERVICES AND VETERANS' AFFAIRS.....	49
Adult Day Care, Energy Assistance, Nutrition, Para-Transit Services, Veterans Services, Senior Area Providers, Senior Centers	
SHERIFF'S DEPARTMENT .....	53
SOCIAL SERVICES BOARD.....	54
SUPERINTENDENT OF SCHOOLS.....	54
SURROGATE'S COURT .....	55
TAX BOARD .....	55
SUPERIOR COURT .....	56

# COUNTY ADMINISTRATOR

---

Administration Building • 401 Grand Street • Room 205 • Paterson, NJ 07505

[passaiccountynj.org/Administration](http://passaiccountynj.org/Administration)

County Administrator  
**Anthony J. De Nova III**

[adenova@passaiccountynj.org](mailto:adenova@passaiccountynj.org)

Phone: (973) 881-4405

Fax: (973) 881-2853

Deputy County Administrator

**Marc E. Seemon**

[mseemon@passaiccountynj.org](mailto:mseemon@passaiccountynj.org)

Phone: (973) 881-4407

Fax: (973) 881-2853

The County Administrator is responsible for the day-to-day operations of the County, as well as supervising the schedule and procedures to be followed by all County departments, offices, and agencies. The Administrator sit as an Ex-Officio, non-voting member of all appointed committees and implements policy decisions of the governing body. The Administrator is charged with working with the Finance Department to create the County's annual operating and capital budgets. The Administrator supervises the care and custody of all County property, institutions, and agencies. The Administrator is designated the appointing authority for personnel actions concerning Passaic County employees and officers, as well as the representative of the County government for collective negotiations with employees.

## COUNTY ADJUSTER

Administration Building • 401 Grand Street • Room 516 • Paterson, NJ 07505

[passaiccountynj.org/Adjuster](http://passaiccountynj.org/Adjuster)

County Adjuster: **Domenick Stampone**

[domenicks@passaiccountynj.org](mailto:domenicks@passaiccountynj.org)

Phone: (973) 881-4835

The County Adjuster's Office was created by NJ statute and is responsible for handling all civil commitment investigations and financial hearings that involve commitments to hospitals for mental illness. The office is also responsible for docketing, scheduling and presenting civil commitment hearings for Passaic County residents.

## PUBLIC INFORMATION OFFICER

Administration Building • 401 Grand Street • Room 205 • Paterson, NJ 07505

Public Information Officer: **Neela Mahbuba**

[mneela@passaiccountynj.org](mailto:mneela@passaiccountynj.org)

Phone: (973) 225-5380

# BOARD OF ELECTIONS

---

Administration Building • 401 Grand Street • Room 123 • Paterson, NJ 07505

[passaiccountynj.org/BoardOfElections](https://passaiccountynj.org/BoardOfElections)

Office Administrator

**Ken Hirmann**

[kenh@passaiccountynj.org](mailto:kenh@passaiccountynj.org)

Phone: (973) 881-4780

Fax: (973) 523-9121

Deputy Administrator/  
Bilingual Coordinator

**Allyson Clavijo**

[allisonc@passaiccountynj.org](mailto:allisonc@passaiccountynj.org)

Phone: (973) 754-6865

The Office of the Board of Elections is responsible for the recruitment, hiring, training, and placement of all board workers throughout the County. The office also canvasses and counts all mail-in ballots and provisional ballots. The Board of Elections certifies the list of polling places used on election days. The Passaic County Board of Elections consists of four members, two from each party.

## BOARD OF ELECTIONS COMMISSIONERS

**John Currie, Chairman/Commissioner (D)**

Term Expires: 3-1-2024

**John Traier, Secretary/Commissioner (R)**

Term Expires: 3-1-2024

**Rita Gernant, Commissioner (D)**

Term Expires: 3-1-2023

**Timothy Troast, Commissioner (R)**

Term Expires: 3-1-23

# BUILDINGS AND GROUNDS

---

151 East 11th Street • Paterson, NJ 07503

[passaiccountynj.org/Buildings](http://passaiccountynj.org/Buildings)

Public Buildings Superintendent

**Stephen Orsini**

[steveo@passaiccountynj.org](mailto:steveo@passaiccountynj.org)

Phone: (973) 881-4425

Fax: (973) 754-1988

The Buildings and Grounds Division is responsible for general maintenance and janitorial services for County-owned and occupied buildings, and those occupied by the State of New Jersey Judiciary Passaic Vicinage. It provides technical and mechanical services required by any department and the Courthouse Complex for the safe and efficient operation of heating, ventilating, air-conditioning, plumbing and electrical systems of same. Additionally, it provides security, other than law enforcement personnel, for County facilities.



# COUNTY CLERK

---

Administration Building • 401 Grand Street • Room 130 • Paterson, NJ 07505

Satellite Office • 1237 Ringwood Ave • Wanaque, NJ 07465

[passaiccountyclerk.org](http://passaiccountyclerk.org)



Passaic County Clerk

**Danielle Ireland-Imhof**

[passaiccountyclerk@passaiccountynj.org](mailto:passaiccountyclerk@passaiccountynj.org)

Phone: (973) 225-3690

Fax: (973) 754-1920

The County Clerk's Office is a constitutional office as set forth in the NJ State Constitution. The Passaic County Clerk's Office includes the Elections Division and Registry of Deeds Division. The County Clerk's Office is located in the Administration Building. Services are also provided throughout the County on a rotating basis, as well in the Wanaque satellite office.

The Clerk's office processes applications for American passports at the Paterson and Wanaque offices, as well as at outreach sites. A photo service for passports is provided. Veteran photo identification cards are also issued by this office, and are available without an appointment.

Notary Public applications and notary certifications are provided by the Clerk's office. The office administrates and executes notary oaths.

For all the services offered by the Passaic County Clerk, visit [www.passaiccountyclerk.org](http://www.passaiccountyclerk.org) or the County Clerk's social media accounts.

# COUNTY CLERK

---



@PassaicCountyClerk



@PassaicCoClerk



@PassaicCountyClerk

## ELECTIONS

Administration Building • 401 Grand Street • Room 113 • Paterson, NJ 07505

Phone: (973) 881-4127

Fax: (973) 742-5744

The Elections Division handles the drawing for ballot positions and is in charge of printing sample and emergency ballots, canvas sheets, machine strips, and voter registration lists. The Clerk also certifies votes for school, primary, and general elections to municipal clerks and the Secretary of State. The County Clerk receives petitions for candidates for elective county office. The Clerk receives applications for mail-in ballots and maintains the mail-in voter list for all mail-in applications and ballots.

## REGISTRY DIVISION

Administration Building • 401 Grand Street • Room 113 • Paterson, NJ 07505

Vault: 77 Hamilton Street • Paterson, NJ 07505

Phone: (973) 881-4777

Fax: (973) 357-1046

The Registry Division of the County Clerk is responsible for the recording, filing, and preserving of all documentation pertaining to property transactions within the 16 municipalities. In addition to deed and mortgage transactions, the Registry Division also files Notices of Settlement, Internal Revenue Service Liens, Foreclosures, Honorable Military Discharges, and Financial Statements.

## CLERK TO THE BOARD

---

Administration Building • 401 Grand Street • Room 223 • Paterson, NJ 07505

[passaiccountynj.org/CountyCommissioners](http://passaiccountynj.org/CountyCommissioners)

Clerk to the Board  
**Louis E. Imhof III**  
[louisi@passaiccountynj.org](mailto:louisi@passaiccountynj.org)  
Phone: (973) 881-4402  
Fax: (973) 742-3746

The Clerk to the Board of County Commissioners keeps minutes and records of orders and proceedings of the Board. The Clerk has custody of the official seal of the County and all records, documents, and other official papers relating to the property and business of the County. The Clerk performs services for the Board and manages the County Commissioners' office.

## COUNTY COUNSEL

---

Administration Building • 401 Grand Street • Room 214 • Paterson, NJ 07505

[passaiccountynj.org/Counsel](http://passaiccountynj.org/Counsel)

County Counsel  
**Matthew P. Jordan, Esq.**  
[matthewj@passaiccountynj.org](mailto:matthewj@passaiccountynj.org)  
Phone: (973) 881-4466  
Fax: (973) 881-4072

Deputy County Counsel  
**Nadege D. Allwaters, Esq.**  
[nadegea@passaiccountynj.org](mailto:nadegea@passaiccountynj.org)  
Phone: (973) 881-4466  
Fax: (973) 881-4072

County Counsel is the chief legal advisor to County government. County Counsel is responsible for providing legal advice, representation, and assistance to the Board of Chosen County Commissioners and all County departments, as well as all constitutional officers, including the Sheriff, County Clerk, and Surrogate. County Counsel oversees all litigation in which the County is party and reviews all contracts and resolutions adopted by the County.



# CULTURAL AND HISTORIC AFFAIRS

---

Dey Mansion • 199 Totowa Road • Wayne, NJ 07470

[passaiccountynj.org/DCHA](http://passaiccountynj.org/DCHA)

[seepassaiccounty.org](http://seepassaiccounty.org)

Director

**Kelly C. Ruffel**

[kellyr@passaiccountynj.org](mailto:kellyr@passaiccountynj.org)

Phone: (973) 706-6640

The Department of Cultural and Historic Affairs (DCHA) is responsible for supporting the arts, history and historic preservation for the County of Passaic. This department plays a leading role in helping to build a flourishing cultural environment that benefits and distinguishes Passaic County as a cultural destination. This department seeks to expand opportunities for arts and history organizations in hopes of increasing public accessibility and awareness while promoting heritage tourism.



The DCHA encourages public participation in Passaic County's heritage through its various programs and partnership with historic sites throughout the County. The County owns various historic sites, including the Dey Mansion, Lambert Tower, Lambert Castle, the John W. Rea House, the Westervelt-Vanderhoef House, the County Court House and Court House Annex, Goffle Brook Park, and Garret Mountain Reservation. This department is charged with preserving and maintaining these sites for future generations.

# COUNTY EDUCATIONAL FACILITIES

---

## PASSAIC COUNTY COMMUNITY COLLEGE

[pccc.edu](http://pccc.edu)

President

Dr. Steven M. Rose

[srose@pccc.edu](mailto:srose@pccc.edu)

Phone: (973) 684-5900

Fax: (973) 684-5843

Admissions Phone: (973) 684-6868

Passaic County Community College (PCCC) is a two-year public college committed to serving the educational needs of Passaic County residents. PCCC operates four campus locations throughout Passaic County, each equipped with state-of-the-art facilities. PCCC offers over 60 degree and career programs and an award-winning faculty, as well as continuing education and community-based programs. Programs are offered to fit any schedule, with both traditional and online courses available.

PCCC has affordable tuition and offers a variety of financial aid and scholarship programs to qualified candidates. Students who are at least eighteen years of age or have graduated high school are admitted to the college. Non-credit continuing education classes are also available in a wide variety of areas.



**Paterson:** 1 College Boulevard

**Wanaque:** 500 Union Avenue

**Wayne:** 300 Oldham Road

**Passaic:** 2 Paulison Avenue

# COUNTY EDUCATIONAL FACILITIES

## PASSAIC COUNTY TECHNICAL-VOCATIONAL SCHOOLS

45 Reinhardt Road • Wayne, NJ 07470

[pcti.tec.nj.us](http://pcti.tec.nj.us)

Superintendent

**John Maiello**

[jmaiello@pcti.tec.nj.us](mailto:jmaiello@pcti.tec.nj.us)

Phone: (973) 389-4201

Fax: (973) 790-6018



Passaic County Technical-Vocational Schools (PCTVS) are a national award-winning, comprehensive academic and career-oriented technical high school located on a 55-acre campus in Wayne.

The school is home to more than 3,800 high school students from Passaic County. PCTVS's dedicated and highly trained teaching staff delivers an exciting curriculum in 14 highly specialized schools and academies, including the new state-of-the-art STEM (Science, Technology, Engineering and Math) Academy.

PCTVS prepare students for a global society by offering the latest training in careers, technology, athletics and extracurricular activities in an up-to-date facility. An additional 1,000 adults take advantage of the adult program offering each year.

Visit [www.pcti.tec.nj.us](http://www.pcti.tec.nj.us) for more information.

# SUPERINTENDENT OF ELECTIONS

---

501 River Street • Paterson, NJ 07524

[passaiccountynj.org/SOE](http://passaiccountynj.org/SOE)

Superintendent of Elections &  
Commissioner of Registration:

**Shona Mack-Pollock, Esq.**  
[shonam@passaiccountynj.org](mailto:shonam@passaiccountynj.org)

Phone: (973) 881-4515

Deputy Superintendent

**Ronald Fava**

[rfava@passaiccountynj.org](mailto:rfava@passaiccountynj.org)

Phone: (973) 881-4515

Fax: (973) 881-1634

The Superintendent of Elections provides voter registration, maintains voter records, changes to records, and voter history. The office prepares and certifies voting machines for elections, and prepares and mails sample ballots prior to each election. The office receives provisional ballots and is responsible for security and research of provisional ballots affirmation statements.

## ENGINEERING

---

Administration Building • 401 Grand Street • Room 524 • Paterson, NJ 07505

[passaiccountynj.org/Engineering](http://passaiccountynj.org/Engineering)

County Engineer

**Jonathan Pera**

[jonathanp@passaiccountynj.org](mailto:jonathanp@passaiccountynj.org)

Phone: (973) 881-4450

Fax: (973) 742-3936

The Department of Engineering is in charge of administrative and supervisory duties in the planning, design, and inspection of the improvement, reconstruction, and rehabilitation of County public works facilities: roads, bridges, culverts, public buildings, and parks facilities. The Engineering Department also maintains records of County facilities, recommends traffic rules and regulations, assists the Passaic County Planning Board, and oversees the Roads Division.

# FINANCE

---

Administration Building • 401 Grand Street • Room 439 • Paterson, NJ 07505

[passaiccountynj.org/Finance](http://passaiccountynj.org/Finance)

Chief Financial Officer

**Richard Cahill**

[rcahill@passaiccountynj.org](mailto:rcahill@passaiccountynj.org)

Phone: (973) 881-4440

Fax: (973) 881-0196

The Finance Department is responsible for the fiscal operations of the County. Those responsibilities include assisting the County Administrator in the preparation of the annual budget and the appropriation of capital funds for current and future needs. Under the umbrella of the Finance Department are the functions of treasury, debt management, accounts payable, accounts receivable, grants, payroll, pension administration, insurance and records management.

## TREASURER

Administration Building • 401 Grand Street • Room 439 • Paterson, NJ 07505

Treasurer: **Erin Mooney**

[flavior@passaiccountynj.org](mailto:flavior@passaiccountynj.org)

Phone: (973) 881-4530

The Treasurer is responsible for all cash activities of the County Finance Department, including the collection of all funds due to the County, cash disbursements, and the investment of idle funds as permitted under state statute. The Treasurer is also charged with ensuring all cash activity is posted to a general ledger and with preparing a bank reconciliation monthly.

## OFFICE OF SELF-INSURANCE

Administration Building • 401 Grand Street • Room 214 • Paterson, NJ 07505

Director: **Vicken Sarkissian**

[vickens@passaiccountynj.org](mailto:vickens@passaiccountynj.org)

Phone: (973) 754-6860

The Office of Self-Insurance is responsible for the receipt and maintenance of all workers' compensation claims and reports, and the preparation and filing of OSHA Forms. This office is also responsible for risk management by updating and maintaining all insurance coverages and issuance of Certificates of Insurance, and maintaining all County-owned vehicular accidents and claims.

# DEPARTMENT OF HEALTH SERVICES

---

930 Riverview Drive • Suite 250 • Totowa, NJ 07512

[passaiccountynj.org/Health](http://passaiccountynj.org/Health)

Health Officer  
**Dr. Charlene W. Gungil**  
Phone: (973) 881-4396  
Fax: (973) 225-0222

The Passaic County Department of Health Services (PCDHS) is comprised of four divisions: Emergency Preparedness and Bioterrorism, Environmental, Mosquito Control, and Natural Resources and Recycling.

The Emergency Preparedness and Bioterrorism program is designated by the NJ Department of Health as the official Local Information Network and Communications System (LINCS) site within the County. LINCS allows for rapid time dissemination of critical public health information to local health departments, hospitals, law enforcement, offices of emergency management and other community agencies. The Bioterrorism Surveillance Team monitors infectious diseases in the community, coordinates disease investigations, provides technical advice, educates health care providers about bioterrorism and other emerging infectious disease and responding to public health emergencies. This team also manages the Passaic County Medical Reserve Corps (MRC).

## ENVIRONMENTAL HEALTH

Supervisor: Paul Fen  
[pfen@passaiccountynj.org](mailto:pfen@passaiccountynj.org)  
Phone: (973) 225-3829

The Passaic County Department of Health, as an agent of the NJ Department of Environmental Protection, ensures compliance with state statutes and regulations governing air, water, noise, solid waste, hazardous materials, and pollution. Environmental health specialists monitor, respond, and coordinate mitigation of hazards that could potentially harm Passaic County residents. PCDHS also assists in coordinating response to public health issues such as West Nile Virus, anthrax, H1N1, Ebola, COVID-19 and seasonal influenza.

# DEPARTMENT OF HEALTH SERVICES

---

## MOSQUITO CONTROL

1310 Route 23 North • Wayne, NJ 07470

[passaiccountynj.org/Mosquito](http://passaiccountynj.org/Mosquito)

Superintendent: **Joseph Pezzillo**

[joep@passaiccountynj.org](mailto:joep@passaiccountynj.org)

Phone: (973) 305-5754

Mosquito Adulticide Hotline (In-Season): (973) 305-5759

Passaic County Mosquito Control, through an Integrated Pest Management (I.P.M.) approach, performs mosquito control in the County's 16 municipalities. Source reduction, education, larval mosquito control, and adult mosquito control are some aspects of the County program. Mosquito Control is important as a quality of life issue and as a health issue to help prevent human cases of mosquito-borne diseases, such as West Nile Virus.

## NATURAL RESOURCES AND RECYCLING

930 Riverview Drive • Suite 250 • Totowa, NJ 07512

[passaiccountynj.org/Recycling](http://passaiccountynj.org/Recycling)

Solid Waste Coordinator: **Nina Seidan**

[ninas@passaiccountynj.org](mailto:ninas@passaiccountynj.org)

Phone: (973) 305-5738

Fax: (973) 225-0222

The Passaic County Office of Natural Resources and Recycling Program coordinates the solid waste and recycling planning functions for the 16 communities of Passaic County. The office offers technical support to the municipalities it serves, including the residential, commercial, and institutional sectors. The office offers a variety of programs to the public, including household hazardous waste collections, computer and electronics recycling collections, document shredding and recycling, tire recycling, backyard composting bin and rain barrel sales and education, and litter prevention and abatement. The office also offers public outreach and educational programs, as well as a variety of school education programs on these subjects, which are presented free of charge year-round.

# HUMAN RESOURCES

---

Administration Building • 401 Grand Street • Room 404 • Paterson, NJ 07505

[passaiccountynj.org/HR](http://passaiccountynj.org/HR)

Director

**Cristi V. Mahabir**

[hr@passaiccountynj.org](mailto:hr@passaiccountynj.org)

Phone: (973) 881-4480

Fax: (973) 881-4485

As an Equal Opportunity Employer, the Department of Human Resources is responsible for processing employment from recruiting to retirement, including compliance under the NJ State Civil Service Commission. This department assists employee with medical, family, and workman compensations leaves with pay and without pay in compliance with the Family Medical Leave Act and American Disability Act.

Passaic County is a great place to work, offering a positive work environment, competitive salary and benefits, and opportunities for personal growth and development.

The Benefits Division assists all County employees with medical, prescription, dental and voluntary benefits, Flexible Spending Account (FSA), Block Vision and Aflac, and others. The Benefits Division has annual meetings to inform and educate employees about their benefits.

Passaic County offers to its employees an Employee Assistance Program (EAP) to provide employees and their immediate family members with assistance in dealing with conflict and crisis in their personal lives.

The Human Resources Department has continuous education training and seminars that inform and educate employees about workplace etiquette, cultural sensitivity and awareness, harassment and sexual harassment, and many other relevant topics.

To view job openings for the County of Passaic, visit

[passaiccountynj.org/jobs](http://passaiccountynj.org/jobs)



# HUMAN SERVICES

---

Administration Building • 401 Grand Street • Room 506 • Paterson, NJ 07505

[passaiccountynj.org/HumanServices](http://passaiccountynj.org/HumanServices)

Director

**Arti Kakkar, PhD**

Phone: (973) 881-2834

Fax: (973) 881-2733

The Human Services Department is an umbrella social service agency concerned with planning and finding services for the County's disadvantaged and homeless citizens. Programs include mental health, addiction treatment, NJ 211, Juvenile Detention Alternatives Initiative (JDAI), homeless housing, mortgage and foreclosure counseling, rental and utility assistance, and at-risk youth programs.

Programs operate out of four divisions:

## **MENTAL HEALTH & ADDICTION SERVICES .....(973) 881-3188**

This division promotes programs and formulates treatments, psychotherapy, case work, alcoholism and drug treatment, and counseling on an individual and group basis.

## **COMMUNITY OUTREACH & FAMILY SERVICES .(973) 881-2834**

Programs are provided to assist working families living in Passaic County. This division provides services to the community, including veterans, the homeless and those unemployed.

## **JUVENILE ADMINISTRATION .....(973) 881-2834**

This division receives county, state and federal funding to administer programs for the County Family Court. Additionally, this division operates the Youth Services Commission, which serves as the planning body for the development of at-risk and low income youth programs.

## **WORKFORCE DEVELOPMENT BOARD (WDB) ....(973) 569-5082**

The WDB is dedicated to supporting workforce and economic development by connecting Passaic County residents to jobs, and ensuring that employers have the skilled workers they need to grow, compete, and prosper.

# PARKS AND RECREATION

---

209 Totowa Road • Wayne, NJ 07470

[passaiccountynj.org/Parks](http://passaiccountynj.org/Parks)

Director

**Darryl Sparta**

[darryls@passaiccountynj.org](mailto:darryls@passaiccountynj.org)

Phone: (973) 881-4832

Fax: (973) 872-2684

The Parks and Recreation Department manages 13 facilities encompassing 16,000 acres of parkland. The Passaic County Park System features a number of recreational activities for residents, including athletic fields, hiking trails, picnic areas, and a full service 36-hole golf facility. Park patrons can find our hiking trail system on Google Maps, which ensures safety and enhances the experience of hikers in our park system. This department is responsible for the daily maintenance of the Park System, managing a number of improvement projects, and acting as a steward of the long-term sustainable of the parkland.



The Passaic County Parks System includes the Preakness Valley Golf Course. Founded in 1931, it was the first public golf course in Passaic County. The course, situated in Preakness Valley Park next to the Historic Dey Mansion, is comprised of two 18-hole courses, practice greens, and a driving range. The golf course is open from dawn to dusk year-round. The course is closed on Christmas Day and New Year's Day.

# PARKS AND RECREATION

---



## PASSAIC COUNTY PARK SYSTEM

Apshawa Preserve	<i>West Milford</i>
Camp Hope	<i>West Milford</i>
Mayor Dunleavy Memorial Park	<i>Bloomingtondale</i>
Dundee Island Park	<i>Passaic</i>
Garret Mountain Reservation	<i>Woodland Park</i>
Goffle Brook Park	<i>Hawthorne</i>
Highlands Preserve	<i>West Milford</i>
Peckman Preserve	<i>Little Falls</i>
Pompton Aquatic Park	<i>Pompton Lakes and Wayne</i>
Preakness Valley Park & Golf Course	<i>Wayne</i>
Rifle Camp Park	<i>Woodland Park</i>
Tranquility Ridge Park	<i>Ringwood and West Milford</i>
Weasel Brook Park	<i>Clifton</i>

Learn more about each park on page 90.

To view maps of each park, visit [passaiccountynj.org/ParkMaps](https://passaiccountynj.org/ParkMaps).

# PARKS AND RECREATION

---

## RUTGERS COOPERATIVE EXTENSION

1310 Route 23 North • Wayne, NJ 07470

[passaic.njaes.rutgers.edu/](http://passaic.njaes.rutgers.edu/)

County Extension Department Head

**Sara Elnakib**

[elnakib@njaes.rutgers.edu](mailto:elnakib@njaes.rutgers.edu)

Phone: (973) 305-5742



### 4-H YOUTH DEVELOPMENT PROGRAM

[passaic.njaes.rutgers.edu/4h](http://passaic.njaes.rutgers.edu/4h)

4-H Development Agent: **Marycarmen Kunicki**

[kunicki@njaes.rutgers.edu](mailto:kunicki@njaes.rutgers.edu) Phone: (973) 684-4786

### AGRICULTURAL & NATURAL RESOURCES

[passaic.njaes.rutgers.edu/ag](http://passaic.njaes.rutgers.edu/ag)

Program Associate: **Cecilia Diaz**

[cd765@njaes.rutgers.edu](mailto:cd765@njaes.rutgers.edu) Phone: (973) 305-5748

### ENVIRONMENTAL AND RESOURCES MANAGEMENT

[passaic.njaes.rutgers.edu/environment](http://passaic.njaes.rutgers.edu/environment)

Agent: **Amy Rowe**

[rowe@njaes.rutgers.edu](mailto:rowe@njaes.rutgers.edu) Phone: (973) 305-5746

### FAMILY AND COMMUNITY HEALTH SCIENCES

[passaic.njaes.rutgers.edu/fchs](http://passaic.njaes.rutgers.edu/fchs)

Educator: **Sara Elnakib**

[elnakis@njaes.rutgers.edu](mailto:elnakis@njaes.rutgers.edu) Phone: (973) 305-5746

### RUTGERS MASTER GARDENERS

[passaic.njaes.rutgers.edu/garden](http://passaic.njaes.rutgers.edu/garden) Phone: (973) 305-5743

# PARKS AND RECREATION

---

## RUTGERS COOPERATIVE EXTENSION

Rutgers Cooperative Extension of Passaic County, in collaboration with the Passaic County Board of County Commissioners and the NJ Agricultural Experiment Station, provides residents with a direct link to Rutgers, The State University of New Jersey. Rutgers Cooperative Extension is the local, research-based education arm of the University.



Rutgers Cooperative Extension of Passaic County programming includes Master Gardener and Environmental Stewards classes, with Agricultural and Resource Management staff also providing technical assistance to farmers, municipalities, and business owners regarding the environmental and agricultural issues. The 4-H Youth Development Program uses a learn-by-doing approach to enable youth to develop the knowledge, attitude, and skills to become caring and competent citizens. The Family and Community

Health Sciences staff conduct programs focused on food, nutrition, and health and implement educational programs that focus on combating childhood obesity and adult diseases such as diabetes, heart disease and cancer.

Staff from the federally-funded Expanded Food and Nutrition Education Program (EFNEP) provide nutrition classes to help limited-resource families and children in Paterson and Passaic to eat better and get more active on a budget.

For additional information, visit [passaic.njaes.rutgers.edu](http://passaic.njaes.rutgers.edu).

## PLANNING & ECONOMIC DEVELOP-

---

Administration Building • 401 Grand Street • Room 417 • Paterson, NJ 07505

[passaiccountynj.org/Planning](http://passaiccountynj.org/Planning)

Acting Director

**Andras Holzmann, AICP, PP**

[mlysicatos@passaiccountynj.org](mailto:mlysicatos@passaiccountynj.org)

Phone: (973) 569-4040

Fax: (973) 812-3450

The Planning and Economic Development Department provides expert staff support to the County Planning Board, Board of County Commissioners, County Agriculture Development Board, and Open Space, Farmland and Historic Preservation Trust Fund Advisory Committee. The Planning Board is charged with the development of a County Master Plan and regulatory review of subdivisions and site plans. This department facilitates the development and redevelopment of communities that offer citizens a high quality of life by meeting their needs for employment, affordable housing, efficient transportation and access to leisure, recreational and cultural opportunities.

The Planning and Economic Development also provides project funding and professional expertise for urban design and transportation enhancement initiatives throughout the County's sixteen municipalities. This department manages the County's Geographic Information System (GIS) and provides staff support for historic preservation and tourism initiatives to promote Passaic County. It is home to the Economic Development Office, which promotes business activity and manages the Community Development Block Grant (CDBG) program.

### PUBLIC HOUSING AGENCY

155 Willowbrook Blvd • Suite 100 • Wayne, NJ 07470

[passaiccountynj.org/Housing](http://passaiccountynj.org/Housing)

Executive Director: **Janice DeJohn**

[janicedj@passaiccountynj.org](mailto:janicedj@passaiccountynj.org)

Phone: (973) 881-4369

Fax: (973) 684-0317

The Passaic County Public Housing Agency is responsible for the administration of 835 federally funded Housing Choice vouchers, which provide rental assistance to eligible County residents who reside in privately owned apartments. The Housing Agency does not serve the cities of Paterson, Passaic or Clifton—these municipalities operate their own housing programs.

# PLANNING & ECONOMIC DEVELOP-

---

## ECONOMIC DEVELOPMENT DIVISION

Administration Building • 401 Grand Street • Room 417 • Paterson, NJ 07505

[passaiccountynj.org/EcoDev](http://passaiccountynj.org/EcoDev)

Division Director: **Deborah Hoffman**

[deborahh@passaiccountynj.org](mailto:deborahh@passaiccountynj.org)

Phone: (973) 569-4720

Fax: (973) 569-4725

The Division of Economic Development provides direct technical assistance to companies seeking to expand or relocate to the County of Passaic. Services include real estate identification, assistance in securing loans/lines of credit, information on grants and business incentives, energy incentives, job training programs, and sponsorship of seminars on a wide range of business issues.

This division initiates and supports large-scale real estate development projects, manages the County Comprehensive Economic Development Strategy and Committee, and promotes the redevelopment of brownfield sites. The division manages the Passaic County Brownfields Commission and the Passaic County Film Commission, which hosts the annual Passaic County Film Festival. This division also administers the Passaic County Community Development Block Grant (CDBG) Program and the CDBG Disaster Recovery Program.

## COUNTY HISTORIAN

County Historian: **Edward A. Smyk**

[esmyk@passaiccountynj.org](mailto:esmyk@passaiccountynj.org)

Phone: (973) 881-4834

Fax: (973) 881-9447

The primary responsibility of the County Historian is to research, write, publish, and disseminate articles on the history of Passaic County. Within limits, the historian acts as a reference source for those seeking various categories of historical information. In addition, the Historian acts as the County Commissioners' advisor on the acquisition, administration use and restoration of landmarks and historic properties within the County's jurisdiction.

# PREAKNESS HEALTHCARE CENTER

---

305 Oldham Road • Wayne, NJ 07470

[passaiccountynj.org/PreaknessHealthcare](http://passaiccountynj.org/PreaknessHealthcare)

Executive Director  
Lucinda Corrado

[lcorrado@passaiccountynj.org](mailto:lcorrado@passaiccountynj.org)

Phone: (973) 317-7020

Fax: (973) 790-1568



Preakness Healthcare Center is licensed as a 406-bed skilled nursing facility that is owned and operated by the Passaic County Board of County Commissioners. Preakness Healthcare Center has been providing high-quality healthcare since 1929.

Preakness Healthcare Center is one of the largest nursing facilities in New Jersey. It is licensed by the NJ Department of Health and Senior Services. The facility is Medicaid and Medicare certified.

Services include sub-acute care, long-term skilled nursing care, respite care, peritoneal dialysis, mental health services, hospice and palliative care programs, Alzheimer's disease and dementia care, ventilator-dependent with hemodialysis services and licensed special care behavioral management.

The Passaic County Meals on Wheels program is housed in the facilities' kitchen.



# PREAKNESS HEALTHCARE CENTER

---

Preakness Healthcare offers a variety of amenities for our residents:

- Private and semi-private rooms
- Exercise facility
- Game room
- Library
- Cafeteria
- On-site hair salon
- On-site dental services
- Complimentary Internet and TV access
- Laundry services, and religious services
- Beautiful courtyards and patios

Preakness Healthcare Center offers a myriad of activities for our residents including community trips, concerts, cultural programs, creative arts, and pet therapy.



Keep up with everything happening at Preakness Healthcare Center with the “Preakness Press” newsletter:

[passaiccountynj.org/PreaknessPress](https://passaiccountynj.org/PreaknessPress)

# PROSECUTOR'S OFFICE

---

Administration Building • 401 Grand Street • Paterson, NJ 07505

30 King Road • Totowa, NJ 07512

[pcponj.org](http://pcponj.org)

Prosecutor

**Camelia M. Valdes**

Phone: (973) 881-4800

Fax: (973) 225-0155

FIRST ASSISTANT PROSECUTOR: **Neil J. Cleary**

EXEC. FIRST ASSISTANT PROSECUTOR: **James P. Berado**

EXEC. FIRST ASSISTANT PROSECUTOR: **Gina Pfund**

DEPUTY FIRST ASSISTANT PROSECUTOR: **Seth Galkin**

DEPUTY FIRST ASSISTANT PROSECUTOR: **Jason Statuto**

CHIEF OF COUNTY INVESTIGATORS: **Chris Drelich**

ADMINISTRATIVE TRIAL DIVISION..... Phone: (973) 881-4856  
Deputy Chief Marco Aliano

DOMESTIC VIOLENCE..... Phone: (973) 837-7721  
Sergeant Mario Tejada

JUVENILE..... Phone: (973) 837-7721  
Sergeant Mario Tejada

TRIAL UNIT ..... Phone: (973) 837-7604  
Sergeant Michael Boone

EXTRADITION..... Phone: (973) 837-7604  
Sergeant Michael Boone

GRAND JURY UNIT ..... Phone: (973) 881-4989  
Sergeant Angela Sigismondi

ANIMAL CRUELTY UNIT ..... P: (973) 881-4881  
Detectives Harris/Kassas

# PROSECUTOR'S OFFICE

---

SPECIAL VICTIMS UNIT ..... Phone: (973) 837-7643

Sergeant Anthony Aceste

HOMICIDE UNIT ..... Phone: (973) 881-7690

Sergeant Sabrina McKoy

MAJOR CRIMES DIVISION ..... Phone: (973) 837-7736

Captain James Stolz

FINANCIAL CRIMES ..... Phone: (973) 837-7663

Lieutenant Timothy Leach

NARCOTICS DIVISION..... Phone: (973) 837-7691

Sergeant Rick Ferreira

INTELLIGENCE/HOMELAND SECURITY ..... Phone: (973) 837-7618

Captain Susan Bonds

WHITE COLLAR CRIME DIVISION ..... Phone: (973) 837-7618

Captain Susan Bonds

POLICE SHOOTING RESPONSE TEAM ..... Phone: (973) 837-7736

Captain James Stolz



# DEPARTMENT OF PUBLIC SAFETY

---

Director  
**George Rosenthal**  
[robertl@passaiccountynj.org](mailto:robertl@passaiccountynj.org)  
Phone: (973) 569-6411  
Fax: (973) 569-6874

The Department of Public Safety is responsible for planning and directing effective administration of county safety and security.

## OFFICE OF EMERGENCY MANAGEMENT

Passaic County Community College Public Safety Academy  
300 Oldham Road • Wayne, NJ 07470

[passaiccountynj.org/OEM](http://passaiccountynj.org/OEM)

Coordinator: **Sheriff Richard H. Berdnik**  
Phone: (973) 904-3621

The Office of Emergency Management acts as the coordinating agency among municipal, state and federal governments. The office reviews local Emergency Option Plans and refers them to the NJ State Police Office of Emergency Management. The office helps coordinate responses to local disasters and files municipal applications for state or federal disaster aid.

## POLICE ACADEMY

214 Oldham Road • Wayne, NJ 07470

[passaiccountynj.org/PoliceAcademy](http://passaiccountynj.org/PoliceAcademy)

Director: **George Rosenthal**  
Phone: (973) 595-6411

Basic Police Training Commission Classes Fax: (973) 595-6874  
In-Service Training Courses Fax: (973) 595-6896

The mission of the Passaic County Police Academy is to provide the most up to date and diversified quality instruction for recruits and veteran police officers. In-Service training classes are offered at no cost year-round to all Passaic County police agencies. The Academy provides continuing education in Law Enforcement, keeping officers up to date with current techniques.

# DEPARTMENT OF PUBLIC SAFETY

---

The NJ Police Training Commission has certified the Passaic County Police Academy to teach:

- Basic Course for Police Officers
- Basic Course for County Correction Officers
- Class I-II Special Officers
- Basic Course for Juvenile Detention Officers
- Methods of Instruction Course
- Radar Operators Course
- Radar Instructors Course
- Basic Firearms Instructors Course
- Crime Prevention for Patrol Officers (In-Service)
- Crime Prevention for Police Executives
- Physical Conditioning Instructors Course
- Fundamentals of Crime Prevention for the Crime Prevention Officer

## WEIGHTS & MEASURES

[passaiccountynj.org/WM](http://passaiccountynj.org/WM)

Phone: (973) 305-5750

Fax: (973) 872-4552

The Division of Weights and Measures is responsible for ensuring that all commercial and law enforcement weighing and measuring devices are tested and inspected for accuracy, and meet federal guidelines for specifications and tolerances.

# PURCHASING & PROCUREMENT

---

495 River Street • Paterson, NJ 07524

[passaicbids.com](http://passaicbids.com)

Purchasing Agent

**Sherry Arvanitakis, QPA**

[bids@passaiccountynj.org](mailto:bids@passaiccountynj.org)

Phone: (973) 247-3300

Fax: (973) 742-8295

Deputy Purchasing Agent

**Carmen Santana**

Phone: (973) 742-3307

Fax: (973) 742-8295

Warehouse Supervisor

**David Curtiss**

Phone: (973) 247-3316

Fax: (973) 569-0219

The Purchasing Department's primary role is to provide purchasing support to services to all Passaic County departments. This is accomplished by monitoring all purchases of materials, supplies and equipment for compliance with the New Jersey Public Contracts Law. The Purchasing Department also acts as a lead agency for the Passaic County Cooperative Pricing System and oversees operations of the County's bulk purchase warehouse operation.

Passaic County is happy to offer a free email subscription, which allows vendors, professionals and the general public to receive notifications by email when new purchasing information is available.

# ONE-STOP CAREER CENTER

---

## OFFICES AND TRAINING CENTER

200 Memorial Drive • Paterson, NJ 07505

[pcwdc.org](http://pcwdc.org)

Executive Director  
**Lauren Murphy**  
Phone: (973) 684-4786

## WANAQUE OFFICE

1237 Ringwood Ave • Wanaque, NJ 07465

Phone: (973) 617-1479  
Fax: (973) 617-1478

The One Stop Career Center offers a variety of services designed to meet customers' employment needs. Internet access, job search services, and placement services are available, as well as individual testing, counseling, and workshops. The business resource center assists employers in finding employees. Training may also be available to qualified individuals who need to update their skills.

The Passaic County One Stop Center offers programs dedicated to specialized eligible populations, such as persons with disabilities, low-income disadvantaged (welfare to work) and academic remediation related to job skills and career advancement.



# ROADS DIVISION

---

1310 Route 23 North • Wayne, NJ 07470

[passaiccountynj.org/Roads](http://passaiccountynj.org/Roads)

Supervisor of Roads

**Kenneth A. Simpson**

[kenneths@passaiccountynj.org](mailto:kenneths@passaiccountynj.org)

Phone: (973) 881-4500

Fax: (973) 742-2498

The Division of Roads is responsible for maintaining and repairing all County roads, culverts, catch basins, guide rails, and pavement on County bridges. Roadways are maintained curb to curb for pavement, drainage system, street cleaning, leaf collection and snow and ice control. The Road Division maintains traffic signals and signal systems, regulatory, warning and guide signs, and trees within County Right-of-Ways. The services and programs carried out by the Division are to provide for the safe passage of both motorists and pedestrians while using County roads.

All Passaic County vehicles, with the exception of the Sheriff's Office and Para-Transit vehicles, are repaired, maintained, and given the State Motor Vehicle Inspection by the Roads Division. This division also has a sign shop, which makes custom signs for Passaic County events, lettering for offices and vehicles, signs for County road resurfacing, and directional signs for roadways.



Did you know Passaic County has an online system for citizens to report potholes, roadway debris, tree issues, roadkill and general road conditions? If you experience any of these issues on a county road, please notify us at the link below.

A list of county roads can be found at [passaiccountynj.org/Roads](http://passaiccountynj.org/Roads).



# SENIOR SERVICES, DISABILITY

---

930 Riverview Drive • Suite 200 • Totowa, NJ 07512

[passaiccountynj.org/Seniors](http://passaiccountynj.org/Seniors)

Executive Director

**Shirley Force**

[shirleyf@passaiccountynj.org](mailto:shirleyf@passaiccountynj.org)

Phone: (973) 569-4060

Fax: (973) 256-5190

ADRC (877) 222-3737

The Department of Senior Services includes the Office on Aging, Nutrition, Adult Day Care, Veterans' Affairs, Energy Assistance, and Para-Transit. This department provides and coordinates numerous services, and sponsors many activities for senior citizens. Services available within the County include transportation, seasonal cleaning, housekeeping, certified home health aides, telephone reassurance, social adult day care, and legal services.

Activities include educational conferences, evening socials, health fairs, and trips to various locations. Advocacy efforts on behalf of the senior citizens range from policy development to petitioning elected officials.

This department is designed as an ADRC (Aging & Disability Resource Connection) coordinating and providing information, assistance, outreach, in-home risk assessments, care management services and benefit screenings. A coordinated effort with the Passaic County Board of Social Services assists those individuals at risk of placement in a nursing facility with additional senior health programs.

## SENIOR PATHWAY NEWSLETTER

To sign up to receive our Senior Pathway Newsletter, please call the Passaic County Senior Services Department at (973) 569-4060.

View the latest edition of "Senior Pathway" at

[passaiccountynj.org/SeniorPathway](http://passaiccountynj.org/SeniorPathway)

# SENIOR SERVICES, DISABILITY

---

## ADULT DAY CARE

[passaiccountynj.org/AdultDayCare](http://passaiccountynj.org/AdultDayCare)

Division Director: Gary W. Marchese Jr.

[garym2@passaiccountynj.org](mailto:garym2@passaiccountynj.org)

Phone: (973) 569-4080

Fax: (973) 256-5718

Passaic County Adult Day Care is a social day program for County residents 60 years of age or older who no longer manage independently or who are isolated and lonely. The day care provides a planned program of activities designed to promote well-being through social and health related services and group activities.

Some activities offered include: arts and crafts, musical entertainment, mental stimulation games, stretching and gentle exercise, as well as shopping trips. Continental breakfast and lunch are served daily. Transportation is available if needed. Adult Day Care is held Monday through Friday from 8:30 a.m. to 2 p.m.

## ENERGY ASSISTANCE

930 Riverview Drive, Suite 250 • Totowa, NJ 07512

301 Main Street • Paterson, NJ 07505

330 Passaic Street • Passaic, NJ 07055

[passaiccountynj.org/HomeEnergy](http://passaiccountynj.org/HomeEnergy)

Division Director: Kevin Batacchi

[kevinba@passaiccountynj.org](mailto:kevinba@passaiccountynj.org)

Phone: (973) 569-4032

Fax: (973) 256-2067

Weatherization enables low-income families to permanently reduce their energy bills by making their homes more energy efficient. Homes receive a thorough evaluation of heating systems, insulation, and windows, as well as health and safety testing of all combustion appliances. Local licensed and insured private sector weatherization contractors complete the work at no cost to the resident. The Home Energy Office administers the Low Income Home Energy Assistance Program (LIHEAP) and Universal Service Fund (USF) programs. These programs help make energy bills more affordable for low-income customers.

# SENIOR SERVICES, DISABILITY

---

## NUTRITION SERVICES (MEALS ON WHEELS)

[passaiccountynj.org/Nutrition](http://passaiccountynj.org/Nutrition)

Division Director: **Bennie Cook**

[benniec@passaiccountynj.org](mailto:benniec@passaiccountynj.org)

Phone: (973) 569-4099

Fax: (973) 812-3459

The mission of Nutrition Services is to provide nutritious meals and other supportive services to assist both congregate and home-delivered recipients in maintaining and/or improving their health status and independence. For more information on our Meals on Wheels program, visit [passaiccountynj.org/MOW](http://passaiccountynj.org/MOW).

## PARA-TRANSIT

[passaiccountynj.org/ParaTransit](http://passaiccountynj.org/ParaTransit)

Division Director: **Michael Parra**

[michaelp@passaiccountynj.org](mailto:michaelp@passaiccountynj.org)

Phone: (973) 305-5756

Fax: (973) 305-9328

The Passaic County Para-Transit Program maintains a fleet of vehicles, providing transportation for senior citizens in need of non-emergency rides to doctor offices, hospitals, shopping centers, and County-run nutrition and day care sites. Special lift vans can accommodate non-ambulatory persons.

## VETERANS SERVICES

[passaiccountynj.org/Veterans](http://passaiccountynj.org/Veterans)

Veterans' Office: **Wilfredo Rodriguez**

[wilfredor@passaiccountynj.org](mailto:wilfredor@passaiccountynj.org)

Phone: (973) 569-4060

Fax: (973) 256-5716

The Veterans' Office provides information and referrals, and assists with applications for entitlements to the V.A., as well as for pension, compensation, survivor's benefits, medical and nursing home placement, insurance, and education. This office distributes flags to all Passaic County veteran groups for cemeteries.

# SENIOR SERVICES, DISABILITY

---

## SENIOR AREA PROVIDERS

- City of Clifton Office of Senior Services .....(973) 470-2236  
City of Passaic Office of Senior Affairs ..... (973) 365-5754  
City of Paterson Division of Senior Services .....(973) 653-5932

## SENIOR CENTERS

- Lester Herchaft Senior Center** .....(973) 265-1540  
900 Clifton Avenue, Barn C-5 • Clifton, NJ 07011
- Annabelle Shimkowitz Senior Center** .....(973) 881-4988  
330 Passaic Street • Passaic, NJ 07055
- Totowa Senior Center** .....(973) 569-4088  
930 Riverview Drive, Suite 200 • Totowa, NJ 07512
- Hawthorne Senior Center** .....(973) 423-1027  
970 Goffle Road • Hawthorne, NJ 07506
- Aphsawa Volunteer Fire Station** .....(973) 557-6474  
666 Macopin Road • West Milford, NJ 07480
- Bloomingdale Senior Center** .....(973) 835-4433  
101 Hamburg Turnpike • Bloomingdale, NJ 07403
- Riverside Veterans Building** .....(973) 225-0231  
165 5th Avenue • Paterson, NJ 07524

# SHERIFF'S DEPARTMENT

---

[www.pcsheriff.org](http://www.pcsheriff.org)

Sheriff

**Richard H. Berdnik**

Phone: (973) 389-5900

Fax: (973) 256-5716

LAW ENFORCEMENT DIVISION

435 Hamburg Turnpike • Wayne, NJ 07470

COURTHOUSE COMPLEX

77 Hamilton Street • Paterson, NJ 07505

Family Court and Security .....	(973) 225-8326
24-Hour Communications Center .....	(973) 389-5951
County Jail .....	(973) 881-2400
Patrol Division .....	(973) 389-5900
Courthouse Division .....	(973) 881-4200
Civil Process .....	(973) 881-4200 x200
Detective Division .....	(973) 389-5900
Identification Bureau .....	(973) 881-4600
Warrants .....	(973) 389-5900
Community Policing .....	(973) 389-5920

The Passaic County Sheriff's Department has diverse law enforcement duties through the County. They are responsible for the custody and control of inmates in the Passaic County Jail. Additionally, officers provide security for all officials, jurors, and visitors to the County Courthouse Complex, conduct sheriff's sales of various properties, and collect salary garnishes, turning the money over to the courts.

The Sheriff's Department operates the County's identification bureau, which maintains criminal records of anyone convicted of a crime in Passaic County. Sheriff's officers patrol County roads and parks, as well as assist all municipalities requesting additional police aid.

The Sheriff's Department conducts the Passaic County Drug Task Force and Fugitive Warrant Squad, serving summonses and subpoenas issued by the Superior Court.

## SOCIAL SERVICES BOARD

---

Martin Luther King Building • 80 Hamilton Street • Paterson, NJ 07505

[pcbss.org](http://pcbss.org)

Executive Director

**Talisa Coleman**

[tcoleman@pcbss.org](mailto:tcoleman@pcbss.org)

Phone: (973) 881-0100 ext. 800

Field Office • 114 Prospect Street • Passaic, NJ 07055

Phone: (973) 470-5038

Fax: (973) 470-5055

Branch Office • 1237 Ringwood Avenue • Wanaque, NJ 07420

Phone: (973) 839-5705

Fax: (973) 839-1994

The Board of Social Services is responsible for ensuring the uniform and effective administration of public assistance programs and provides social services that enhance the quality of life of eligible County residents. The board is composed of ten commissioners, of which two must be women. With the exception of two County Commissioner representatives, who serve on a yearly basis, and the County Adjuster, who serves as an ex-officio board member, the commissioners hold office for overlapping five-year terms. The commissioners serve without compensation.

## SUPERINTENDENT OF SCHOOLS

---

501 River Street • Paterson, NJ 07505

[passaiccountynj.org/Schools](http://passaiccountynj.org/Schools)

Interim Executive County Superintendent of Schools

**Kesha T. Drakeford**

[kesha.drakeford@doe.nj.gov](mailto:kesha.drakeford@doe.nj.gov)

Phone: (973) 569-2122

Fax: (973) 754-0241

The Executive County Superintendent of Schools of Passaic County is a representative of the NJ Department of Education, Office of the Commissioner of Education, and works with local school districts ensure compliance with state and federal regulations.

## SURROGATE'S COURT

---

71 Hamilton Street • Room 101 • Paterson, NJ 07505

[passaiccountynj.org/Surrogate](http://passaiccountynj.org/Surrogate)

Surrogate  
**Zoila Cassanova, Esq.**  
surrogate@passaiccountynj.org  
Phone: (973) 881-4760  
Fax: (973) 523-3449

The Surrogate is an elected constitutional officer and is acknowledged as a judge in Surrogate's Court. The three principal areas of the Surrogate's responsibilities are: establish an estate by appointing an executor/executrix if a will is offered or, if there is no will, by appointing an administrator/administratrix; to appoint guardians for minors and incapacitated persons; and to receive and process documentation for adoptions.

## TAX BOARD

---

435 Hamburg Turnpike • Wayne, NJ 07470

[passaiccountynj.org/TaxBoard](http://passaiccountynj.org/TaxBoard)

Tax Administrator  
**Jay R. Schwartz, M.P.A., C.T.A.**  
Phone: (973) 720-7399  
Fax: (973) 720-6846

President: **Louis Batelli**  
Commissioner: **Vilmo DiPaolo**  
Commissioner: **Ernest Scheidemann**

The Board of Taxation serves as the supervising taxing authority for the County. The Tax Board hears all property tax appeals brought by County residents and establishes County and municipal tax rates for each municipality.

# SUPERIOR COURT

---

[www.njcourts.gov](http://www.njcourts.gov)

## COURTHOUSE COMPLEX

77 Hamilton Street • Paterson, NJ 07505

Phone: (973) 653-2910

The Passaic County court system is located in downtown Paterson at the Courthouse Complex.

**CRIMINAL DIVISION** has six courts, handling the dispositions of all indictable crimes.

**FAMILY DIVISION** has eight courts, which cover all juvenile complaints as well as family matters, such as dissolution (divorce) and non-dissolution (family violence, etc.).

**CIVIL DIVISION** has nine courts, which cover landlord-tenant disputes, complaints involving claims for amounts over \$15,000, and special civil, which covers complaints involving claims under that amount.

**GENERAL EQUITY, CHANCERY DIVISION** handles non-monetary civil cases including foreclosures, labor disputes, trade secrets, and the division of property.

## SUPERIOR COURT

Assignment Judge: Ernest M. Caposela

(973) 653-2910 ext. 24425

### PRESIDING JUDGES

CIVIL .....	Thomas F. Brogran .....	ext. 24455
FAMILY .....	Rudolph Filko .....	ext. 24510
CRIMINAL.....	Sohail Mohammed .....	ext. 24555
GEN. EQUITY ...	Frank Covello .....	ext. 24445
MUNICIPAL .....	John F. Meola .....	ext. 24070



# SUPERIOR COURT

---

## COURT ADMINISTRATION

Trial Court Administrator: **Robert D. Tracy**

Phone: (973) 653-2910 ext. 32918

Fax: (973) 424-8012

General Operations Division Manager: **Donna Hoffman**

Phone: (973) 653-2910 ext. 24011

Fax: (973) 424-8012

## PASSAIC VICINAGE DIVISION MANAGERS

All exchanges: (973) 653-2910

VICINAGE HUMAN RESOURCES: <b>Stephanie Rivera</b> .....	x 24056
CIVIL DIVISION .....	x 24260
CRIMINAL DIVISION .....	x 24397
EEO/AA OFFICER.....	x 24067
FAMILY DIVISION .....	x 24390
MUNICIPAL DIVISION .....	x 24070
PROBATION DIVISION.....	x 24102
OMBUDSMAN .....	x 24032

# SUPERIOR COURT

---

## TRANSCRIPTS

71 Hamilton Street • Room 146 • Paterson, NJ 07505

Phone: (973) 653-2910 ext. 24029

Fax: (973) 247-8751

## JURY MANAGEMENT

Administration Building • 401 Grand Street • Room 325 • Paterson, NJ 07505

Jury Manager: **Maria Vlahos**

Phone: (973) 653-2980

Fax: (973) 424-6879

## PROBATION DIVISION

55 Dale Avenue • Paterson, NJ 07505

Vicinage Chief Probation Officer: **Dawn Moody**

Phone: (973) 653-2910 ext. 24102

## VICINAGE ASSISTANT CHIEF PROBATION OFFICER

**Gina Scappaticcio** ..... (973) 653-2910 ext. 24104

## PASSAIC VICINAGE JUDGES

All exchanges (973) 653-2910

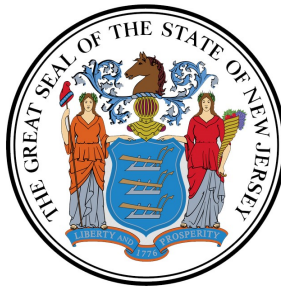
Vicki A. Citrino .....	x 24475	Barbara J. Buono Stanton	x 24535
Darren J. Del Sardo .....	x24831	Richard M. Freid .....	x 24530
Adam E. Jacobs .....	x 24525	LaToyia K. Jenkins.....	x 24540
Thomas J. LaConte .....	x 24415	Lawrence Maron .....	x 24560
Bruno Mongiardo .....	x 24465	Daniel J. Yablonsky .....	x 24580
Randal C. Chiocca.....	x 24435		
Miguel A. de la Carrera .....	x 24575		
Imre Karaszegl .....	x 24550		
Marybel Mercado-Ramirez	x 24515		
Justine A. Niccollai.....	x 24505		
Joseph A. Portelli .....	x 24495		
Scott T. Rumana.....	x 24570		
Yolanda Adrianzen .....	x 24520		
Scott J. Bennion .....	x 24545		

# FEDERAL AND STATE OFFICIALS

---



Federal Officials..... 60  
President of the United State, Senators, and Representatives



State Officials..... 62  
Governor, Senate, and Assembly Members

# FEDERAL OFFICIALS

---

## PRESIDENT OF THE UNITED STATES

**Joseph R. Biden, Jr.**

Term Expires: 1-20-2025

The White House

1600 Pennsylvania Avenue NW • Washington, DC 20500

Phone: (202) 456-1111

## UNITED STATES SENATE

**Cory Booker**

Term Expires: 1-03-2027

One Gateway Center • 23rd Floor • Newark, NJ 07102

Phone: (973) 639-8700

Fax: (973) 639-8723

One Port Center • 2 Riverside Drive • Suite 505 • Camden, NJ 08103

Phone: (856) 338-8922

Fax: (856) 338-8936

717 Hart Senate Office Building • Washington, DC 20510

Phone: (202) 224-3224

Fax: (202) 224-8378

**Robert Menendez**

Term Expires: 1-03-2025

210 Hudson Street • Harborside 3 • Suite 1000 • Jersey City, NJ 07311

Phone: (973) 645-3030

208 White Horse Pike • Suite 18 • Barrington, NJ 08007

Phone: (856) 757-5353

Fax: (856) 546-1526

528 Hart Senate Office Building • Washington, DC 20002

Phone: (202) 224-4744

Fax: (202) 228-2197

# FEDERAL OFFICIALS

---

## UNITED STATES CONGRESS

### CONGRESS 5th DISTRICT

*Ringwood, West Milford*

**Josh Gottheimer**

Term Expires: 1-03-2025

60 Margaret King Ave • Ringwood, NJ 07456

Phone: (973) 814-4076

213 Cannon House Office Building • Washington, DC 20515

Phone: (202) 225-4465

### CONGRESS 9th DISTRICT

*Clifton, Haledon, Hawthorne, Passaic, Paterson, Prospect Park*

**William J. Pascrell, Jr.**

Term Expires: 1-03-2025

200 Federal Plaza • Suite 500 • Paterson, NJ 07505

Phone: (973) 523-5152

2409 Rayburn House Office Building • Washington, DC 20515

Phone: (202) 225-5751

### CONGRESS 11th DISTRICT

*Bloomington, Little Falls, North Haledon, Pompton Lakes,*

*Totowa, Wanaque, Wayne, Woodland Park*

**Mikie Sherrill**

Term Expires: 1-03-2025

8 Wood Hollow Road • Suite 203 • Parsippany, NJ 07054

Phone: (973) 526-5668

1414 Longworth House Office Building • Washington, DC 20515

Phone: (202) 225-5034

# STATE OFFICIALS

---

## GOVERNOR

**Phil Murphy**

Term Expires: 1-18-2026

P.O. Box 001 • State House • Trenton, NJ 08625

Phone: (609) 292-6000

## SENATORS AND ASSEMBLY MEMBERS

### 26th District

*West Milford*

**Senator Joseph Pennacchio**

170 Changebridge Road • Unit A1 • Montville, NJ 07045

Phone: (973) 227-4945

**Assemblyman Christian E. Barranco**

762 Rt. 15 South - Suite 1A - Lake Hopatcong, NJ 07849

Phone: (973) 810-2695

**Assemblyman Jay Webber**

160 Littleton Road • Suite 204 • Parsippany, NJ 07054

Phone: (973) 917-3420

### 34th District

*Clifton*

**Senator Nia H. Gill, Esq.**

39 South Fullerton Avenue • 2nd Floor • Suite 7 • Montclair, NJ 07042

Phone: (973) 509-0388

**Assemblyman Thomas P. Giblin**

855 Valley Road • Suite 104 • Clifton, NJ 07013

Phone: (973) 779-3125

**Assemblywoman Britnee Timberlake**

520 Main Street • Suite 1 • East Orange, NJ 07018

Phone: (973) 395-1166

## STATE OFFICIALS

---

### 35th District

*Haledon, North Haledon, Paterson, Prospect Park*

#### **Senator Nellie Pou**

100 Hamilton Plaza • Suite 1405 • Paterson, NJ 07505  
Phone: (973) 247-1555

#### **Assemblywoman Shavonda E. Sumter**

21 Mill Street • Suite 5 • Paterson, NJ 07501  
Phone: (973) 925-7063

#### **Assemblyman Benjie Wimberly**

301 Main Street • Suite 360 • Paterson, NJ 07505  
Phone: (973) 925-7061

### 36th District

*Passaic*

#### **Senator Paul A. Sarlo**

496 Columbia Boulevard • 1st Floor • Wood-Ridge, NJ 07075  
Phone: (201) 804-8118

#### **Assemblyman Clinton Calabrese**

613 Bergen Boulevard • Ridgely, NJ 07657  
Phone: (201) 943-0615

#### **Assemblyman Gary Schaer**

1 Howe Avenue • Suite 401 • Passaic, NJ 07055  
Phone: (973) 249-3665

### 38th District

*Hawthorne*

#### **Senator Joseph Lagana**

205 Robin Road • Suite 122 • Paramus, NJ 07652  
Phone: (201) 576-9199

#### **Assemblywoman Lisa Swain**

205 Robin Road • Suite 122 • Paramus, NJ 07652  
Phone: (201) 576-9199

#### **Assemblyman P. Christopher Tully**

205 Robin Road • Suite 122 • Paramus, NJ 07652  
Phone: (201) 576-9199

## STATE OFFICIALS

---

### 39th District

*Bloomington, Ringwood, Wanaque*

#### **Senator Holly T. Schepisi**

287 Kinderkamack Road • Westwood, NJ 07675

Phone: (201) 666-0881

#### **Assemblyman Robert Auth**

1069 Ringwood Avenue • Suite 312 • Haskell, NJ 07420

Phone: (862) 248-0491

#### **Assemblywoman DeAnne C. DeFuccio**

350 Madison Avenue • Cresskill, NJ 07626

Phone: (201) 567-2324

### 40th District

*Little Falls, Pompton Lakes, Totowa, Wayne, Woodland Park*

#### **Senator Kristin M. Corrado**

999 Riverview Drive • Suite 350 • Totowa, NJ 07512

Phone: (973) 237-1360

#### **Assemblyman Christopher R. DePhillips**

201C Franklin Avenue • Midland Park, NJ 07432

Phone: (201) 444-9719

#### **Assemblyman Kevin J. Rooney**

1211 Hamburg Turnpike • Suite 301 • Wayne, NJ 07470

Phone: (973) 237-1362



# PASSAIC COUNTY MUNICIPALITIES

---

Borough of Bloomingdale.....	66
City of Clifton.....	67
Borough of Haledon.....	68
Borough of Hawthorne.....	69
Township of Little Falls .....	70
Borough of North Haledon.....	71
City of Passaic .....	72
City of Paterson.....	73
Borough of Pompton Lakes .....	74
Borough of Prospect Park .....	75
Borough of Ringwood.....	76
Borough of Totowa.....	77
Borough of Wanaque.....	78
Township of Wayne.....	79
Township of West Milford .....	80
Borough of Woodland Park .....	81

# BOROUGH OF BLOOMINGDALE

---

Established in 1918

[www.bloomingtonj.net](http://www.bloomingtonj.net)

Municipal Building • 101 Hamburg Turnpike • Bloomingdale, NJ 07403

Main Number: (973) 838-0778

Congressional District: 11th

Fax: (973) 838-5155

Legislative District: 39th

Population: 8,088

Area: 8.8 square miles

**Mayor:** John D'Amato

Phone: (973) 838-0778 ext. 243

## Borough Council

**President:** Dawn Hudson

Ray Yazdi

Drew Julin

John Graziano

Dominic Catalano

Evelyn Schubert

**Borough Administrator:** Michael Skondermeyer .....(973) 838-0778 x243

**Municipal Clerk:** Breeanna Smith.....(973) 838-0778 x239

**Municipal Court Administrator:** Lachelle Lenoir.....(973) 838-0127

**Chief Financial Officer:** Donna Mollineaux .....(973) 838-0778

**Emergency Management:** Michael Hudson .....(973) 838-3470

**Fire Chief:** Eric Tuason .....(973) 838-9484

**Health Officer:** Thomas Cantisano .....(973) 835-5700 x128

**Police Chief:** Joseph Borell .....(973) 838-0158 x224

**Public Works Superintendent:** Albert Gallagher.....(973) 838-6055

**Recreation Director:** Rachel Boder.....(973) 838-0778

**Senior Citizen Coordinator:** Patricia Yannacci.....(973) 838-9259

**Tax Assessor:** Brian Townsend.....(973) 838-7426

**Tax Collector:** Barbara Neinstedt .....(973) 838-0330

# CITY OF CLIFTON

---

Established in 1917

[www.cliftonnj.org](http://www.cliftonnj.org)

City Hall • 900 Clifton Avenue • Clifton, NJ 07013

Main Number: (973) 470-5800

Congressional District: 9th

Fax: (973) 470-5264

Legislative District: 34th

Population: 85,204

Area: 11.3 square miles

**Mayor:** James Anzaldi

Phone: (973) 470-5757

## City Council

Peter C. Eagler

William Gibson

Raymond Grabowski

Lauren E. Murphy

Rosemary L. Pino

Mary Sadrakula

City Manager: Dominick Villano.....	(973) 470-5854
City Clerk: Nancy Ferrigno .....	(973) 470-5824
Municipal Court Administrator: Alexis Mitreski.....	(973) 470-5860
Emergency Management: Chief Frank Prezioso.....	(973) 470-5820
Chief Financial Officer: Joseph Kunz .....	(973) 470-5784
Fire Chief: Frank Prezioso .....	(973) 470-5801
Health Officer: John E. Biegel III.....	(973) 470-5760
Police Chief: Thomas Rinaldi.....	(973) 470-5900
Recreation: .....	(973) 470-5956
Senior Services: .....	(973) 470-2234
Tax Assessor: Matthew S. Rinaldi .....	(973) 470-5838
Tax Collector: Eileen Erlewein .....	(973) 470-5830

# BOROUGH OF HALEDON

---

Established in 1908

[www.haledonboronj.com](http://www.haledonboronj.com)

**Municipal Complex • 510 Belmont Avenue • Haledon, NJ 07508**

Main Number: (973) 595-7766

Congressional District: 9th

Fax: (973) 790-4781

Legislative District: 35th

Population: 8,325

Area: 1.2 square miles

**Mayor: Domenick Stampone**

Phone: (973) 595-7766 ext. 101

## **Borough Council**

**President: Mounir Almaita**

Junior A. Morris

Mohammad M. Ramadan

Nereyda Curiel

Carlos Aymat

Aleksandra Tasic

Phone: (973) 595-7766 *unless noted otherwise*

**Municipal Clerk/Administrator:** Allan Susen ..... ext. 103

**Municipal Court Administrator:** Kelly Mullanaphy .....(973) 790-0500

**Chief Financial Officer:** Steve Sanzari ..... ext. 102

**Emergency Management:** Mounir Almaita..... ext. 208

**Fire Chief:** Tom Bakker.....(973) 790-8196

**Health Board President:** Classie Bacon ..... ext. 111

**Police Chief:** Angelo J. Daniele .....(973) 790-4444

**Public Works:** Anthony Harrington..... ext.108

**Senior Citizen Committee:** Joanne Van Hook.....(973) 595-7766

**Tax Assessor:** Brian Townsend.....(973) 942-6538 ext. 131

**Tax Collector:** Stephen Sanzari .....(973) 942-6538 x105

# BOROUGH OF HAWTHORNE

---

Established in 1898

[www.hawthornenj.org](http://www.hawthornenj.org)

**Borough Hall • 445 Lafayette Avenue • Hawthorne, NJ 07506**

Main Number: (973) 427-5555

Congressional District: 9th

Fax: (973) 4272320

Legislative District: 38th

Population: 18,784

Area: 3.3 square miles

**Mayor:** John V. Lane

Phone: (973) 427-1168

## **Borough Council**

**Ward 1:** Joseph R. Wojtecki

**Ward 2:** Rayna Laiosa

**Ward 3:** Mike Sciarra

**Ward 4:** Frank E. Matthews

**At-Large:** Bruce A. Bennett

**At-Large:** Anna Marie Sasso

**At Large:** Dominic Mele

<b>Borough Administrator:</b> Eric Maurer .....	(973) 427-1168
<b>Borough Clerk:</b> Lori Fernandez .....	(973) 427-4493
<b>Municipal Court Administrator:</b> Nora Khoury .....	(973) 304-2052
<b>Emergency Management:</b> Brian Vanderhook.....	(973) 427-1800
<b>Chief Financial Officer:</b> Laurie Foley.....	(973) 427-1169
<b>Fire Chief:</b> Joseph Speranza.....	(973) 296-7420
<b>Health, Borough Physician:</b> Dr. Joseph Lozito .....	(973) 427-4012
<b>Police:</b> .....	(973) 427-1800
<b>Public Works:</b> William Haffler.....	(973) 427-5330
<b>Recreation Director:</b> Jayne TenKate.....	(973) 427-5555 x309
<b>Tax Clerk:</b> Joann Carosotto.....	(973) 427-4423
<b>Tax Collector:</b> Maureen Kyrzynski .....	(973) 304-2053

# TOWNSHIP OF LITTLE FALLS

---

Established in 1868

[www.lfnj.com](http://www.lfnj.com)

**Municipal Building • 225 Main Street • Little Falls, NJ 07424**

Main Number: (973) 256-0170

Congressional District: 11th

Fax: (973) 890-4501

Legislative District: 40th

Population: 14,483

Area: 2.8 square miles

**Mayor: James Belford Damiano, Esq.**

Phone: (973) 256-0170

## Township Council

Anthony Sgobba

Albert Kahwaty

Christopher Vancheri

Christine Hablitz

Tanya Seber

**Business Administrator:** Charles Cuccia .....(973) 890-4500

**Township Clerk:** Cynthia Kraus .....(973) 256-0170

**Municipal Court Administrator:** Andrea Trombino .....(973) 256-0170

**Chief Financial Officer:** Charles Cuccia .....(973) 890-4500

**Emergency Management:** Daniel Gianduso .....(973) 256-0170

**Fire Chief:** Jack Sweezy Jr. ....(973) 256-0301

**Health Officer:** John E. Biegel III.....(973) 470-5760

**Police Chief:** Stephen Post.....(973) 256-0200

**Public Works Director:** Ronald Campbell .....(973) 256-6815

**Recreation Director:** John Pace.....(973) 256-3884

**Tax Assessor:** John Bang .....(973) 256-0170

**Tax Collector:** Denise Whiteside.....(973) 256-0170

# BOROUGH OF NORTH HALEDON

---

Established in 1901

[www.northaledon.com](http://www.northaledon.com)

Municipal Building • 103 Overlook Avenue • North Haledon, NJ 07508

Main Number: (973) 427-7793

Congressional District: 11th

Fax: (973) 427-1846

Legislative District: 35th

Population: 8,437

Area: 3.5 square miles

**Mayor:** Randolph George

Phone: (973) 256-0170

## Borough Council

Donna Puglisi

George Pomianek

Rocco Luisi

Vince Parmese

Jacqueline Roscio

Bruce O. Iacobelli

Administrator/Municipal Clerk: Renate Elatab.....(973) 427-7793

Municipal Court Administrator: Susan Inturrisi.....(973) 423-0232

Emergency Management: Chief Todd Darby .....(973) 423-0232

Chief Financial Officer: Chris Battaglia.....(973) 427-0685

Fire Chief: A.J. Ricciardi.....(973) 427-5055

Health, Registrar: Dena Ploch .....(973) 427-0543

Police Chief: Todd Darby .....(973) 423-1111

Public Works Director: William Graham.....(973) 427-5151

Recreation: Angelo Cifaldi.....(973) 423-0232

Tax Assessor: Timothy Henderson.....(973) 427-7520

Tax Collector: Maureen Kurzynski.....(973) 427-5810

# CITY OF PASSAIC

---

Established in 1873

[www.cityofpassaic.com](http://www.cityofpassaic.com)

**City Hall • 330 Passaic Street • Passaic, NJ 07055**

Main Number: (973) 365-5500

Congressional District: 9th

Fax: (973) 365-0115

Legislative District: 36th

Population: 70,019

Area: 3.1 square miles

**Mayor:** Hector C. Lora

Phone: (973) 365-5510

## City Council

Gary Schaer

Jose Garcia

Terrence L. Love

Thania Melo

Chaim M. Munk

Daniel J. Schwartz

<b>Business Administrator:</b> Rick Fernandez.....	(973) 365-5513
<b>Municipal Clerk:</b> Amanda Curling.....	(973) 365-5584
<b>Municipal Court Administrator:</b> Sandra Henderson .....	(973) 365-3975
<b>Emergency Management:</b> Walter Porto.....	(973) 703-9814
<b>Chief Financial Officer:</b> Omar J. Garcia.....	(973) 365-5577
<b>Fire Chief:</b> Patrick Trentacost Sr.....	(973) 365-5685
<b>Health Officer:</b> Ken Pincus .....	(973) 365-5603
<b>Police Chief:</b> .....	(973) 365-3963
<b>Public Works Superintendent:</b> Mark Watkins Sr. ....	(973) 365-5654
<b>Recreation:</b> .....	(973) 365-5525
<b>Senior Program Coordinator:</b> Francine Wise.....	(973) 365-5754
<b>Tax Assessor:</b> Barbara Williams.....	(973) 365-5539
<b>Tax Collector:</b> Zanab Bachok.....	(973) 365-5530



# CITY OF PATERSON

---

Established in 1792

[www.patersonnj.gov](http://www.patersonnj.gov)

**City Hall • 155 Market Street • Paterson, NJ 07505**

Main Number: (973) 321-1600

Congressional District: 9th

Fax: (973) 321-1311

Legislative District: 35th

Population: 145,710

Area: 8.4 square miles

**Mayor: Andre Sayegh**

Phone: (973) 321-1600

## City Council

**Ward 1:** Michael Jackson

**Ward 2:** Shahin Khalique

**Ward 3:** Alex Mendez

**Ward 4:** Ruby Cotton

**Ward 5:** Luis Velez

**Ward 6:** Alaa "Al" Abdelaziz

**At Large:** Maritza Davila

**At Large:** Dr. Lilisa Mimms

**At Large:** MD Forid Uddin

<b>Business Administrator:</b> Kathleen Long.....	(973) 321-1370
<b>City Clerk:</b> Sonia Gordon.....	(973) 321-1310
<b>Municipal Court Administrator:</b> Manuel Quiles.....	(973) 321-1515
<b>Emergency Management:</b> Rhonda E. Thompson.....	(973) 321-1410
<b>Chief Financial Officer:</b> Javier Silva.....	(973) 321-1350
<b>Fire Chief:</b> Brian McDermott.....	(973) 321-1400
<b>Health Officer:</b> Thakur "Paul" Persaud.....	(973) 321-1242
<b>Police Chief:</b> Ibrahim M. Baycora.....	(973) 321-1150
<b>Public Works:</b> William Rodriguez.....	(973) 321-1488
<b>Recreation:</b> .....	(973) 321-1313
<b>Senior Services:</b> Hilda Diaz.....	(973) 653-5932
<b>Tax Assessor:</b> Richard Marra.....	(973) 321-1380

# BOROUGH OF POMPTON LAKES

---

Established in 1895

[www.pomptonlakes-nj.gov](http://www.pomptonlakes-nj.gov)

**Municipal Building • 25 Lenox Avenue • Pompton Lakes, NJ 07442**

Main Number: (973) 835-0143

Congressional District: 11th

Fax: (973) 839-8132

Legislative District: 40th

Population: 11,029

Area: 2.9 square miles

**Mayor:** Michael Serra

Phone: (973) 835-0143 ext. 240

## Borough Council

Erik DeLine

William Baig

Maria C. Kent

Jennifer Polidori

Bobby Cruz

Ekamon Venin

Phone: (973) 835-0143 *unless noted otherwise*

**Borough Administrator:** Paula Cozzarelli ..... ext. 239

**Municipal Clerk:** Elizabeth Brandsness ..... ext. 238

**Municipal Court Administrator:** Terri A. Malone ..... ext. 236

**Emergency Management:** ..... (973) 835-4906

**Finance:** ..... ext. 229

**Fire Chief:** Jason Ekkers..... (973) 835-0072

**Health Officer:** Mary Ann Orapello..... ext. 235

**Police Chief:** Derek Clark ..... (973) 835-0400

**Public Works Superintendent:** Dan O'Rourke..... ext. 281

**Recreation Director:** Karen Murphy ..... (973) 835-4167

**Tax Assessor:** Brian Townsend..... ext. 231

**Tax Collector:** Debbie Buchanan ..... ext. 234

# BOROUGH OF PROSPECT PARK

---

Established in 1901

[www.prospectpark.net](http://www.prospectpark.net)

**Municipal Building • 106 Brown Avenue • Prospect Park, NJ 07508**

Main Number: (973) 790-7902

Congressional District: 9th

Fax: (973) 790-0394

Legislative District: 35th

Population: 5,865

Area: .5 square miles

**Mayor:** Mohamed T. Khairullah

Phone: (973) 835-0143 ext. 240

## **Borough Council**

Felicia Ortiz

Robert Artis

Alaa Matari

Esther Perez

Anand Shah

Mohammed Hussain

Phone: (973) 790-7902 *unless noted otherwise*

**Borough Administrator:** Intashan Chowdhury ..... ext. 532  
**Acting Borough Clerk:** Beauty Nadim ..... ext. 529  
**Municipal Court Admin:** Miata Frierson ..... ext. 528  
**Emergency Management:** Ariosto Rodriguez ..... ext. 515  
**Chief Financial Officer:** Steve Sanzari ..... ext. 517  
**Fire Chief:** Douglas Struyk ..... ext. 526  
**Health Board Secretary:** Heidi Amaral ..... ext. 524  
**Police Officer in Charge:** Captain Ammen Matari ..... (973) 790-7900  
**Public Works Director:** Ken Valt ..... 502  
**Recreation Director:** Shadi Taha ..... ext. 516  
**Tax Assessor:** Edmund Brown ..... ext. 525  
**Tax Collector:** Steve Sanzari ..... ext. 517

# BOROUGH OF RINGWOOD

---

Established in 1918

[www.ringwoodnj.net](http://www.ringwoodnj.net)

**Municipal Building • 60 Margaret King Avenue • Ringwood, NJ 07456**

Main Number: (973) 962-7037

Congressional District: 5th

Fax: (973) 962-7037

Legislative District: 39th

Population: 12,251

Area: 25.6 square miles

**Mayor:** Sean T. Noonan

Phone: (973) 745-7102

## Borough Council

Stephanie N. Baumgartner

Stephanie A. Forest

Michelle Kerr

Linda Schaefer

John Speer

**Borough Manager:** Scott Heck .....(973) 475-7101

**Municipal Clerk:** Nicole Langenmayr.....(973) 475-7100

**Chief Financial Officer:** Debbie Buchanan .....(973) 475-7111

**Fire Prevention Bureau:** Scott Conley .....(973) 475-7132

**Health Officer:** Kathleen Skrobala .....(973) 962-7079

**Police Chief:** Peter McGinty.....(973) 475-7137

**Public Works Director:** Scott Heck .....(973) 475-7101

**Recreation Director:** Ryan LaCorte.....(973) 475-7129

**Tax Assessor:** Richard Motyka.....(973) 475-7118

**Tax Collector:** Debbie Buchanan .....(973) 475-7111

# BOROUGH OF TOTOWA

---

Established in 1898

[www.totowanj.org](http://www.totowanj.org)

**Municipal Building • 537 Totowa Road • Totowa, NJ 07512**

Main Number: (973) 956-1000

Congressional District: 11th

Fax: (973) 956-8414

Legislative District: 40th

Population: 10,828

Area: 4 square miles

**Mayor:** John Coiro

Phone: (973) 956-1000 ext. 1009

## Borough Council

Louis D'Angelo

Debbie Andriani

Anthony Picarelli

William Bucher

John F. Capo

Patrick Fierro

Phone: (973) 956-1000 *unless noted otherwise*

Borough Clerk: Joseph Wassel .....	ext. 1004
Municipal Court Administrator: Maryann Coral .....	ext. 1006
Emergency Management: Gary Bierach .....	ext. 3704
Chief Financial Officer: Lisa Nash .....	ext. 1002
Fire Official: Richard Scopperth .....	ext. 1013
Health, Registrar: Susan D'Aiuto .....	ext. 1008
Police Chief: Carmen Veneziano .....	(973) 790-3703
Public Works Superintendent: Jim Niland .....	ext. 1072
Recreation Director: Mark Monteyne .....	(973) 956-1781
Senior Services: Maria Murphy .....	ext. 1062
Tax Assessor: Curt Masklee .....	ext. 1007
Tax Collector: Lisa Nash .....	ext. 1002

# BOROUGH OF WANAQUE

---

Established in 1918

[www.wanaqueborough.com](http://www.wanaqueborough.com)

**Municipal Building • 579 Ringwood Avenue • Wanaque, NJ 07465**

Main Number: (973) 839-3000

Congressional District: 11th

Fax: (973) 839-4959

Legislative District: 39th

Population: 11,709

Area: 8.1 square miles

**Mayor:** Daniel Mahler

Phone: (973) 839-3000

## **Borough Council**

Thomas Balunis

Dominick Cortellessa

Edward Leonard

Donald Pasquariello

Robert Pettet

Bridget Pasznik

Phone: (973) 839-3000 *unless noted otherwise*

**Borough Administrator:** Paul M. Carelli.....ext. 7113

**Borough Clerk:** Katherine J. Falone.....ext. 7111

**Municipal Court Administrator:** Zoe Velez .....ext. 7145

**Chief Financial Officer:** Mary Ann Brindisi.....ext. 7116

**Fire Chief:** Mark A. Olivieri.....(973) 835-0556

**Health Officer:** Dr. Charlene Gungil.....ext. 7122

**Police Chief:** Robert Kronyak .....(973) 835-5600

**Public Works Superintendent:** Tad J. Skawinski.....ext. 7118

**Recreation Secretary:** Mary Ann Brindisi.....ext. 7116

**Tax Assessor:** Brian Townsend.....ext. 7129

**Tax Collector:** Ann M. Smolen.....ext. 7127

# TOWNSHIP OF WAYNE

---

Established in 1847

[www.waynetownship.com](http://www.waynetownship.com)

**Town Hall • 475 Valley Road • Wayne, NJ 07470**

Main Number: (973) 694-1800

Congressional District: 11th

Fax: (973) 694-8136

Legislative District: 40th

Population: 53,954

Area: 25 square miles

**Mayor: Christopher Vergano**

Phone: (973) 694-1800

## Township Council

**Ward 1:** Richard Jasterzbski

**Ward 2:** Al Sadowski

**Ward 3:** Franco Mazzei

**Ward 4:** Joseph Scuralli

**Ward 5:** Francine Ritter

**Ward 6:** Jonathan Ettman

**At Large:** Joseph Schweighardt

**At Large:** Jill M. Sasso

**At Large:** David Varano

Phone: (973) 694-1800 *unless noted otherwise*

**Business Administrator:** Talib Aquil .....ext. 3202

**Township Clerk:** Paul V. Margiotta.....ext. 3208

**Chief Financial Officer:** Heather McNamara.....ext. 3233

**Fire Department:** .....ext. 4714

**Health Officer:** MaryAnn Orapello.....ext. 3313

**Police Chief:** Jack McNiff .....(973) 694-0600

**Public Works Director:** Heather Vitz-Del Rio.....ext. 3219

**Recreation:** .....ext. 3259

**Tax Assessor:** James Kreitz .....ext. 3226

**Tax Collector:** Beth Territo.....ext. 3324

# TOWNSHIP OF WEST MILFORD

---

Established in 1834

[www.westmilford.org](http://www.westmilford.org)

Town Hall • 1480 Union Valley Road • West Milford, NJ 07480

Main Number: (973) 728-7000

Congressional District: 5th

Fax: (973) 728-2704

Legislative District: 26th

Population: 26,404

Area: 80 square miles

**Mayor:** Michele Dale

Phone: (973) 728-1113

## Township Council

**President:** Ada Erik

Michael Chazukow

Kevin Goodsir

Warren Gross

David Marsden

Marilyn Lichtenberg

Township Administrator: Bill Senande .....(973) 728-2710

Township Clerk: Bill Senande.....(973) 728-7000

Municipal Court Administrator: Michele Walker.....(973) 728-2750

Emergency Management: Edward Steines .....(973) 728-2840

Chief Financial Officer: Ellen Mageean .....(973) 728-2755

Fire Marshall: Michael Moscatello .....(973) 728-2840

Health Officer: Dr. Charlene Gungil.....(973) 728-2726

Police Chief: James DeVore .....(973) 728-2817

Public Works Director: Edward Steines.....(973) 728-2850

Recreation Director: Daniel Kochakji.....(973) 728-2881

Senior Services: Flo McClellan.....(973) 728-2871

Tax Assessor: Brian Townsend.....(973) 728-2793

Tax Collector: Rita DeNivo .....(973) 728-2785



# BOROUGH OF WOODLAND PARK

---

Established in 1914

[www.wpnj.us](http://www.wpnj.us)

**Municipal Building • 5 Brophy Lane • Woodland Park, NJ 07424**

Main Number: (973) 345-8100

Congressional District: 11th

Fax: (973) 345-8194

Legislative District: 40th

Population: 12,547

Area: 2.9 square miles

**Mayor:** Keith Kazmark

Phone: (973) 345-8100 ext. 210

## **Borough Council**

**President:** Vincent DeCesare

Joseph Spinelli

Adam Chaabane

Tracy Kallert

Tina Gatti

Gary G. Holloway

Rita Pascrell

Phone: (973) 345-8100 *unless noted otherwise*

**Municipal Clerk:** Sandra Olivola..... ext. 201

**Court Administrator:** Mary Ann Coral..... ext. 102

**Emergency Management:** Sgt. Joseph Domicolo .....(973) 345-8116

**Chief Financial Officer:** Heather Barkenbush ..... ext. 205

**Fire Chief:** Paul Salomone Jr. ....(973) 742-1122

**Health Officer:** Dr. Charlene Gungil..... ext. 203

**Police Chief:** John Uzzalino.....(973) 345-8122

**Public Works Director:** John Pietrowski.....(973) 256-1264

**Recreation Director:** Thomas DeSiervo ..... ext. 232

**Tax Assessor:** Tim Henderson ..... ext. 212

**Tax Collector:** Bernadette Lawler ..... ext. 101

# BOARDS, AGENCIES & COMMISSIONS

---

Board of Social Services .....	83
Camp Hope Commission .....	83
Community College Board of Trustees .....	84
Construction Board of Appeals .....	84
Friends of Passaic County Parks .....	85
Open Space & Farmland Preservation Trust Fund Advisory Committee .. .....	85
Passaic County Improvement Authority .....	86
Passaic County Utility Authority .....	86
Passaic County Planning Board .....	87
Passaic County Vocational and Technical School Board .....	87
Other Boards, Agencies & Commissions .....	88

## **BOARD OF SOCIAL SERVICES**

---

(973) 881-0100

EXECUTIVE DIRECTOR: Talisa A. Coleman

CHAIRMAN: Linda G. Smith

VICE CHAIRWOMAN: Carol I Cuadrado

SECRETARY TREASURER: Rev. Douglas L. Maven

ASSISTANT SECRETARY TREASURER: Kathleen A. Donnelly

COMMISSIONER: Dawn Alston

COMMISSIONER: Dr. Jabeen Ahmed

COMMISSIONER: John Bartlett

COMMISSIONER: Bruce James

COMMISSIONER: Marilyn Frierson

COUNTY COMMISSIONER: Bruce James

## **CAMP HOPE COMMISSION**

---

(973) 728-8166

PRESIDENT: Theresa Olivo

VICE PRESIDENT: Linda Lepore

SECRETARY-TREASURER: Doris Whitaker

COMMISSIONER: Patrick Sullivan

COUNTY COMMISSIONER: Terry Duffy

COUNTY COMMISSIONER: Bruce James

COUNSEL: John Pogorelec Jr., Esq.

ADJUSTER: Domenick Stampone

# PASSAIC COUNTY COMMUNITY COLLEGE BOARD OF TRUSTEES

---

(973) 684-6800

PRESIDENT / SECRETARY: **Steven M. Rose**

COUNSEL: **Michael A. Cerone Jr., Esq.**

CHAIR: **Deborah S. Hoffman**

VICE CHAIR: **Garland Collins**

TRUSTEE: **Matthew Bariso**

TRUSTEE: **Steven M. Coppa**

TRUSTEE: **Rafael Cuellar**

TRUSTEE: **Jamie Dykes**

TRUSTEE: **Edward R. Farmer**

TRUSTEE: **Steven Gerber**

TRUSTEE: **Harry B. Gourley**

TRUSTEE: **Jacqueline Kineavy**

TRUSTEE: **Ebru Kuscan-Aguirre**

TRUSTEE: **Merille Siegel**

## CONSTRUCTION BOARD OF APPEALS

---

(973) 881-4466

COUNSEL: **Nadege D. Allwaters, Esq.**

FIRE SUB-CODE OFFICIAL: **James R. Booth**

ELECTRICAL SUB-CODE OFFICIAL: **Robert L. Lynch**

PLUMBING SUB-CODE OFFICIAL: **Phillip Cheff**

FIRE PROTECTION OFFICIAL: **John J. Buonanno**

ARCHITECT: **John G. Bleeker**

ALTERNATE MEMBER: **Dennis J. Kolano**

PROFESSIONAL ENGINEER: **Christopher Nash, P.E., P.P.**

# **FRIENDS OF PASSAIC COUNTY PARKS**

---

(973) 881-4405

CHAIRWOMAN: Alice A. Szepietowski

COUNTY COMMISSIONER: John W. Bartlett, Esq.

COUNTY ADMINISTRATOR DESIGNEE: Marc E. Seemon

PARKS & RECREATION DIRECTOR: Darryl Sparta

HISTORIC & CULTURAL AFFAIRS DIRECTOR: Kelly Ruffel

COMMISSIONER: Robert Spiotti

COMMISSIONER: Kelly Pascrell

COMMISSIONER: George Silva

COMMISSIONER: Jamie Dykes

COMMISSIONER: Daryl Walton

# **OPEN SPACE, FARMLAND, & HISTORIC PRESERVATION ADVISORY COMMITTEE**

---

(973) 569-4040

COUNTY COMMISSIONER: Pat Lepore

COUNSEL: John Pogorelec Jr., Esq.

CHAIRWOMAN: Anne Kahwaty

VICE CHAIRMAN: Maria-Elena Grant

DEPUTY COUNTY ADMINISTRATOR: Marc E. Seemon

PARKS DEPARTMENT: Darryl Sparta

ENGINEER: Jonathan Pera, P.E.

MEMBER: Isabel Agudelo

MEMBER: Bhupendra Gadhavi

MEMBER: Bernard Vroom III

MEMBER: Robin Canetti

MEMBER: Sandra Lawson

MEMBER: Laura Lee Harding

MEMBER: Alice A. Szepietowski

# PASSAIC COUNTY IMPROVEMENT AUTHORITY

---

(973) 881-4550

EXECUTIVE DIRECTOR:

CHAIRMAN: Dennis F. Marco

VICE CHAIRMAN: Joseph C. Petriello

COMMISSIONER: Wayne Alston

COMMISSIONER: Michael R. F. Bradley

COMMISSIONER: Michael Glovin

COUNSEL: Peter A. Tucci Jr., Esq

CHIEF FINANCIAL OFFICER: Richard Cahill

# PASSAIC COUNTY UTILITIES AUTHORITY

---

(973) 881-4440

BOND COUNSEL: McManimon & Scotland

CHAIRMAN: Gary Marchese

VICE CHAIRMAN: Haresh Shah

SECRETARY: Catherine Kazan

COMMISSIONER: Maria Deluca-Pranzo

COMMISSIONER: Michael Hanrahan

COMMISSIONER: Teofilo Javier

COMMISSIONER: Clark Okun

ALTNERATE MEMBER: Mohammed Qudah

## **PLANNING BOARD**

---

(973) 569-4040

COUNSEL: **John A. Abdelhadi, Esq.**

CHAIR: **Joseph Metzler**

VICE CHAIR: **Stephen Martinique**

COMMISSIONER: **William Gervens**

COMMISSIONER: **Miguel Diaz**

COMMISSIONER: **Nakima Redmon**

COMMISSIONER: **Kenneth Simpson**

ALTERNATE: **Steve Edmond**

COUNTY COMMISSIONER: **Director Bruce James**

COUNTY COMMISSIONER: **Terry Duffy**

COUNTY COMMISSIONER ALTERNATE: **TJ Best**

COUNTY ENGINEER: **Jonathan Pera, P.E.**

ACTING PLANNING DIRECTOR, SECRETARY: **Andras Holzmann**

## **VOCATIONAL AND TECHNICAL**

---

(973) 389-4204

PRESIDENT: **Michael Coscia**

VICE PRESIDENT: **Damaris M. Solomon**

COMMISSIONER: **Glenn L. Brown**

COMMISSIONER: **Aleksandra Tasic**

COMMISSIONER / PASSAIC COUNTY INTERIM EXECUTIVE

COUNTY SUPERINTENDENT : **Kesha T. Drakeford**

BOARD COUNSEL: **Albert Buglione, Esq.**

BOARD SECRETARY: **Mae Remer**

# **BOARDS, AGENCIES & COMMISSIONS**

---

## **AGRICULTURE DEVELOPMENT BOARD**

Department of Planning ..... (973) 569-4040

## **AMERICANS WITH DISABILILITES ACT (ADA)**

Ken Hirman, ADA Coordinator ..... (973) 881-4531

## **BROWNFIELDS COMMISSION**

Deborah Hoffman, Economic Development ..... (973) 569-4720

## **CITIZENS ADVISORY COMMITTEE ON ENERGY ISSUES**

Department of Planning ..... (973) 569-4040

## **COMMISSION ON THE STATUS OF WOMEN**

Ernestine Dukes ..... (973) 225-3725

## **COMMUNITY COLLEGE BOARD OF SCHOOL ESTIMATE**

Dr. Steven M. Rose, PCCC President ..... (973) 684-5900

## **COMMUNITY COLLEGE SEARCH COMMITTEE**

Louis E. Imhof, III, Clerk to the Board ..... (973) 881-4402

## **COMPREHENSIVE ECONOMIC DEVELOPMENT STRATEGY COMMITTEE**

Deborah Hoffman, Economic Development ..... (973) 569-4720

## **DEFERRED COMPENSATION COMMITTEE**

Flavio Rivera, Treasurer ..... (973) 881-4440

## **OFFICE OF EMERGENCY MANAGEMENT**

Sheriff Richard Berdnik, Coordinator ..... (973) 904-3621

## **ENERGY AND SUSTAINABILITY COMMITTEE**

Department of Planning ..... (973) 569-4040



# **BOARDS, AGENCIES & COMMISSIONS**

---

## **ETHICS BOARD**

County Counsel ..... (973) 881-4466

## **HUMAN SERVICES ADVISORY COUNCIL (HSAC)**

Human Services Department..... (973) 881-2834

## **HUMAN SERVICES COUNTY HOMELSSNESS TRUST ADVISORY COUNCIL**

Human Services Department..... (973) 881-2834

## **INSURANCE FUND COMMISSION**

Vicken Sarkissian, Insurance Director ..... (973) 754-6860

## **MENTAL HEALTH BOARD**

Brenda Browne, Division Director..... (973) 881-2884

## **MOTION PICTURE & TELEVISION FILM COMMISSION**

Deborah Hoffman, Economic Development ..... (973) 569-4720

## **PASSAIC COUNTY TECHNICAL INSTITUTE**

John Maiello, Acting Superintendent ..... (973) 389-4203

## **PASSAIC COUNTY LOCAL ADVISORY COMMITTEE ON ALCOHOLISM & DRUG ABUSE (LACADA)**

Human Services Department..... (973) 881-2834

## **PASSAIC COUNTY PROFESSIONAL ADVISORY COMMITTEE ON ALCOHOLISM & DRUG ABUSE (PACADA)**

Human Services Department..... (973) 881-2834

## **MUNICIPAL ALLIANCE STERRING COMMITTEE ON ALCOHOLISM AND DRUG ABUSE**

Human Services Department..... (973) 881-2834

# **BOARDS, AGENCIES & COMMISSIONS**

---

## **PASSAIC COUNTY ADVISORY COUNCIL ON DISABILITY**

Madeline Soriano ..... (973) 225-3683

## **PASSAIC COUNTY PUBLIC HOUSING AGENCY**

Janice DeJohn, Executive Director ..... (973) 881-4369

## **SENIOR ADVISORY COUNCIL**

Shirley Force, Executive Director ..... (973) 569-4060

## **SENIOR CITIZENS & DISABLED TRANSPORTATION COMMITTEE**

Michael Parra, Division Director ..... (973) 305-5763

## **SOLID WASTE ADVISORY COUNCIL**

Nina Seiden, Coordinator ..... (973) 305-5763

## **WORKFORCE DEVELOPMENT BOARD OF TRUSTEES**

..... (973) 569-5082

## **YOUTH SERVICES COMMISSION**

Le'Var Starr , Youth Services Administrator ..... (973) 881-2880

# PARKS & RECREATIONAL FACILITIES

---

Apshawa Preserve.....	92
Camp Hope .....	92
Dundee Island Park .....	92
Mayor Dunleavy Memorial Park.....	92
Garret Mountain Reservation.....	93
Goffle Brook Park.....	93
Highlands Preserve .....	93
Morris Canal Greenway .....	93
Peckman Preserve.....	94
Pompton Aquatic Park.....	94
Preakness Valley Park and Golf Course .....	94
Rifle Camp Park .....	94
Tranquility Ridge Park .....	95
Weasel Brook Park.....	95

## PARKS & RECREATIONAL FACILITIES

---

### APSHAWA PRESERVE, *West Milford*

[passaiccountynj.org/ApshawaPreserve](https://passaiccountynj.org/ApshawaPreserve)

Apshawa Preserve is an untouched 594-acre park with a 43-acre reservoir and miles of hiking trails for beginners and experts alike. Apshawa offers a diversity of habitats and stunning vistas attracting nature enthusiasts, birdwatchers, and photographers. Hiking trails can be found via Google Maps and on-site kiosks.

### CAMP HOPE, *West Milford*

[passaiccountynj.org/CampHope](https://passaiccountynj.org/CampHope)

Camp Hope, a beautiful 62-acre wooded retreat located on the shores of Greenwood Lake, buzzes year-round with activity. Each year, the camp entertains children and senior citizens from throughout the county. Camp Hope is open to all from 9:00 AM to 2:00 PM on Tuesdays in September through June for breakfast, lunch, and bingo.

### DUNDEE ISLAND PARK, *Passaic*

[passaiccountynj.org/DundeelslandPark](https://passaiccountynj.org/DundeelslandPark)

Dundee Island Park is the County's first riverfront park and first addition to the Passaic County Park System in 50 years. The park opened in October 2020. The new Dundee Island Park includes an elevated field house with a concession and restroom facilities, a refurbished soccer field, playground, spray park, fitness and exercise equipment, a community garden, boat launch, river walk, landscaped improvements, art and place making features, including a sculptor designed by a local artist, and an amphitheater. This is the first step in a long-term plan to develop a riverfront park along the Passaic River.

### MAYOR DUNLEAVY MEMORIAL PARK, *Bloomingtondale*

[passaiccountynj.org/FriendshipPark](https://passaiccountynj.org/FriendshipPark)

This park is an approximately 44-acre natural woodland setting in Bloomingtondale, circled by a looping trail and preserved wetlands. The regularly blazed and maintained 1-mile trail is perfect for beginners or those looking for a low-intensity hike.

## PARKS & RECREATIONAL FACILITIES

---

### **GARRET MOUNTAIN RESERVATION**, *Clifton, Paterson, Woodland Park*

[passaiccountynj.org/GarretMountain](https://passaiccountynj.org/GarretMountain)

This 310-acre park designed by the Olmsted Brothers Firm offers open grass areas, a stocked lake for fishing, and an equestrian center. At the Garret Mountain Equestrian Center, residents can learn horseback riding during summer riding camps, or take their families on trail rides. The park also features picnic areas, a boat house, and trails for both hikers and bikers. Situated more than 500 feet above sea level, the reservation offers views from Passaic County to the Manhattan skyline.

### **GOFFLE BROOK PARK**, *Hawthorne*

[passaiccountynj.org/GarretMountain](https://passaiccountynj.org/GarretMountain)

This scenic 103-acre park in Hawthorne, designed by the famed Olmsted Brothers Firm, offers passive and active recreation opportunities. Features include picnic areas, a dog park, playground equipment, and athletic fields. The park is also home to the Passaic County Arts Center at the John W. Rea House.

### **HIGHLANDS PRESERVE**, *West Milford*

[passaiccountynj.org/GarretMountain](https://passaiccountynj.org/GarretMountain)

Highlands Preserve is a 224-acre park adjacent to the Abram S. Hewitt State Forest in West Milford. The park contains several multi-purpose athletic fields, and offers hiking trails. Highlands Preserve is one of the premier hiking destinations in New Jersey, with trails that connect with the adjacent State Forest near the edge of Greenwood Lake, the Quail State Line and the Appalachian Trail.

### **MORRIS CANAL GREENWAY**

*Clifton, Little Falls, Paterson, Pompton Lakes, Wayne, Woodland Park*

[Passaiccountynj.org/MorrisCanalGreenway](https://Passaiccountynj.org/MorrisCanalGreenway)

The Morris Canal, built from 1825 to 1831 to transport Pennsylvania coal, stretches 102 miles across Warren, Sussex, Morris, Passaic, Essex, and Hudson counties. The canal is listed on the NJ and National Registers of Historic Places. Today, the Morris Canal Greenway project, a state-wide partnership among local communities, nonprofit organizations and historical societies, aims to preserve the canal and

## PARKS & RECREATIONAL FACILITIES

---

### PECKMAN PRESERVE, *Little Falls*

[passaiccountynj.org/PeckmanPreserve](http://passaiccountynj.org/PeckmanPreserve)

Peckman Preserve is a 12-acre pocket park adjacent to remnants of the Morris Canal. The Preserve offers passive recreational opportunities in a scenic setting. Strategic perennial gardens and low impact walking paths complement the undisturbed ecology of this green oasis.

### POMPTON AQUATIC PARK, *Pompton Lakes and Wayne*

[passaiccountynj.org/PomptonAquaticPark](http://passaiccountynj.org/PomptonAquaticPark)

Spanning across the Pompton Lakes and Wayne Township border, and adjacent to the Morris Canal, the emphasis of this 29-acre park is passive recreation. It provides a network of multipurpose trails, scenic vistas, opportunities for fishing, and wildlife habitat. Popular activities in the park include birdwatching, fishing, and hiking.

### PREAKNESS VALLEY PARK AND GOLF COURSE, *Wayne*

[preaknessvalleygolf.com](http://preaknessvalleygolf.com)

This 377 acre park is a public 36-hole full-service golf course. Features include a clubhouse, pro shop, practice facilities and driving range. The course is operated by a Class "A" PGA Golf Pro. The course hosts regular tournaments and the annual Junior Golf League, which strives to instill a love of the game of golf in future players. Membership fees and other information on the Golf Course is available on [preaknessvalleygolf.com](http://preaknessvalleygolf.com). Preakness Valley Park is also home to Historic Dey Mansion, which was used as George Washington's headquarters in 1780.

### RIFLE CAMP PARK, *Woodland Park*

[passaiccountynj.org/RifleCampPark](http://passaiccountynj.org/RifleCampPark)

Adjacent to Garret Mountain Reservation, the 169-acre Rifle Camp Park offers a picnic area, hiking, bird watching and other forms of passive and active recreation. The park also features an amphitheater for summer concerts, warming shelters, trails that can be used for sledding and cross-country skiing, picnic areas, and the John J. Crowley Nature Center.

## PARKS & RECREATIONAL FACILITIES

---

### TRANQUILITY RIDGE PARK, *Ringwood & West Milford*

[passaiccountynj.org/TranquilityRidge](https://passaiccountynj.org/TranquilityRidge)

Tranquility Ridge is a 2,062-acre watershed protection area with hiking trails that connect to the adjacent Sterling State Forest and Long Pond Ironworks. The park was created from parts of the original Long Pond Ironworks, which produced iron for guns, ammunition and other needs during the Revolutionary War, War of 1812, and Civil War. Among the Park's trails is the historic Hasenclever Iron Trail, which was developed for the operations of the Long Pond Ironworks.

### WEASEL BROOK PARK, *Clifton*

[Passaiccountynj.org/WeaselBrookPark](https://passaiccountynj.org/WeaselBrookPark)

Weasel Brook Park, named after the brook that runs through it, is a 19-acre park located in the center of urban Clifton. Weasel Brook Park holds a rich history as it was designed by the famed Olmsted Brothers Firm and is home to the historic Westervelt-Vanderhoef House. The park is the location of a number of events, including concerts, family movies, and flea markets. The park features restrooms, comfort stations, basketball courts, exercise circuit and playgrounds.

To view maps of each park, visit [passaiccountynj.org/ParkMaps](https://passaiccountynj.org/ParkMaps).

## HISTORIC ATTRACTIONS

---

Botto House .....	97
Dey Mansion Washington's Headquarters .....	97
Great Falls National Historic District.....	98
Hamilton House Museum .....	98
Lambert Castle .....	99
Lambert Tower.....	99
Longpond Ironworks.....	100
Ringwood Manor.....	100
Passaic County Arts Center at the John W. Rea House .....	101
Paterson Museum .....	101
Schuyler-Colfax House .....	102
Skylands Botanical Garden .....	102
Van Riper-Hopper House .....	103
Vanderhoef House .....	103



# HISTORIC ATTRACTIONS

---

## BOTTO HOUSE

83 Norwood Street, Haledon

[labormuseum.net](http://labormuseum.net)



The American Labor Museum, housed in the 1908 Botto House National Landmark, was built and owned by Italian immigrant and silk mill worker Pietro Botto and his wife Maria. The home most notably served as a haven for free speech and assembly for silk mill laborers during the 1913 Paterson Silk Strike. The historic house's staff is

dedicated to interpreting the history and contemporary issues of workers, the workplace, and organized labor.

The museum features changing exhibits, restored period rooms and Old World Gardens that reflect the lifestyle of an immigrant family of the early 1900's, a free lending library, and a museum store. Visitors can enjoy exhibit receptions, lectures, poetry readings, teachers' workshops, and other special events.

## DEY MANSION WASHINGTON'S HEADQUARTERS

199 Totowa Road, Wayne

[deymansion.org](http://deymansion.org)

The Dey Mansion, located in Preakness Valley Park, was listed on the State and National Registers of Historic Places in 1972. Under the direction of the Passaic County Board of County Commissioners, the staff at the Dey Mansion is dedicated to preserving and interpreting the history of the Dey family and the important role their home played as General George Washington's headquarters during the summer and fall of 1780. Through tours, lectures, and special events the Dey Mansion promotes the exploration of life in Colonial America, the events and people of the American Revolution, and the need and importance of historic preservation.



# HISTORIC ATTRACTIONS

---

## GREAT FALLS NATIONAL HISTORIC DISTRICT

McBride Avenue Extension and Spruce Street, Paterson



The majestic Paterson Great Falls plunge 77 feet into a 300-foot-wide chasm and have long been a source of inspiration and power. Paterson, the nation's first planned industrial city, was founded by Alexander Hamilton when implementing an innovative hydropower system using the Passaic River to power nearby

mills. The success of this ambitious plan served to support the United States' economic independence. General George Washington even picnicked by the waterfall with the Marquis de Lafayette, Alexander Hamilton, and James McHenry during the Revolutionary War on July 10, 1778. Today, the natural oasis is surrounded by a unique urban park setting as the Paterson Great Falls National Historical Park.

## HAMILTON HOUSE MUSEUM

971 Valley Road, Clifton

[hamiltonhousemuseum.org](http://hamiltonhousemuseum.org)

The Dey Mansion, located in Preakness Valley Park, was listed on the State and National Registers of Historic Places in 1972. Under the direction of the Passaic County Board of County Commissioners, the staff at the Dey Mansion is dedicated to preserving and



interpreting the history of the Dey family and the important role their home played as General George Washington's headquarters during the summer and fall of 1780. Through tours, lectures, and special events the Dey Mansion promotes the exploration of life in Colonial America, the events and people of the American Revolution, and the need and importance of historic preservation.

## HISTORIC ATTRACTIONS

---

### LAMBERT CASTLE

3 Valley Road, Paterson



Built in 1892 by silk magnate Catholina Lambert, Lambert Castle is a late Victorian era Mansion. It was here that he displayed many of his prized European and American paintings. The museum's changing exhibits and furnishings reflect the local history of Passaic County and allow visitors to experience this

historic house, with both period rooms and exhibits. The castle represents one of several rare examples of castellated residential architecture in America.

### LAMBERT TOWER

8 Mountain Ave, Woodland Park

Situated within Garret Mountain Reservation, the 70-foot tall Lambert Tower was built in 1896 by silk mill entrepreneur Catholina Lambert. Along with Lambert Castle, the structure was built to be reminiscent of the castles in Great Britain where Catholina Lambert spent his childhood.



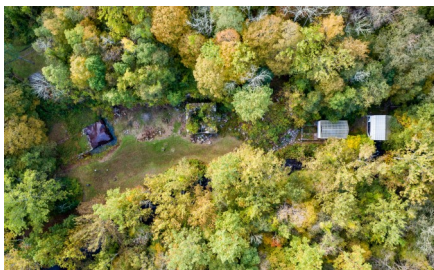
After Lambert's death, the tower was open to visitors throughout the 1930s and was used by the United States' military as a lookout for enemy aircraft during World War II. Today, visitors are able to enjoy spectacular panoramic views from the top of the observation tower.

# HISTORIC ATTRACTIONS

---

## LONG POND IRONWORKS

1304 Sloatsburg Road, Ringwood



Long Pond Ironworks was founded in 1766 as an ironworks "plantation" complete with an iron blast furnace, forge, houses, and farms. Its second ironmaster, the Scottish scientist and inventor Robert Erskine served as surveyor-general to General George

Washington during the American Revolution. He also operated the ironworks at Long Pond and Ringwood, which supplied armaments and goods for the Continental Army. Long Pond Ironworks later went on to produce iron for the American forces during the War of 1812 and for the Union Army during the Civil War.

Operations at the site ceased in 1882 due to the industry-wide conversion to anthracite furnaces using Pennsylvania coal. Today, the ruins of three furnaces and other unique 18th- and 19th-century structures remain.

## RINGWOOD MANOR

1304 Sloatsburg Road, Ringwood

[ringwoodmanor.org](http://ringwoodmanor.org)

Ringwood Manor is a National Historic Landmark District, having historical importance spanning from Native American occupation through the early 20th century. In 1938, Ringwood Manor, its contents, and the surrounding property were donated to the State of New Jersey as a museum and state park. With



original historical structures, gardens, and landscapes on 582 acres and extensive historical collections illustrative of family life, community, industry and culture, Ringwood Manor is a unique repository of American history. Today, Ringwood Manor is a central part of Ringwood State Park and administered by the NJ Department of Environmental Protection.

# HISTORIC ATTRACTIONS

---

## PASSAIC COUNTY ARTS CENTER AT THE JOHN W. REA HOUSE

675 Goffle Road, Hawthorne



The Passaic County Arts Center at the John W. Rea House is dedicated to presenting high-quality and accessible arts events and educational programming to the public. Through gallery exhibitions, workshops, arts classes, and public programs, the Passaic County Arts Center promotes an appreciation for

the visual and performing arts by engaging the community in an environment that nurtures creative expression. The John W. Rea House (circa 1810), which houses the facility, is listed on the State and National Registers of Historic Places. Visitors can view the historic house and different exhibitions, and take part in various educational and public programs.

## PATERSON MUSEUM

2 Market Street, Paterson

[patersonmuseum.com](http://patersonmuseum.com)

The Paterson Museum is devoted to the preservation and display of the city's cultural, technological, and geological history. Visitors enjoy the interpretation of Paterson's unique scientific, industrial, archaeological, historic, and cultural legacy. Museum patrons favor learning about the "Silk



City" and its evolution as a point of interest for machinery, textiles, locomotive and submarine manufacturing, and more general innovation. Founded in 1925, the museum is located in the former Erecting Shop of the Rogers Locomotive Works in heart of the Paterson Great Falls National Historic Park. Its permanent exhibits highlight the Lenape people, textile machinery, Colt firearms, Curtis-Wright aircraft engines, early fire engines, the first successful submarines designed by John P. Holland, and a photograph collection of 200,000 negatives and prints.

## HISTORIC ATTRACTIONS

---

### SCHUYLER-COLFAX HOUSE MUSEUM

2343 Paterson-Hamburg Turnpike, Wayne



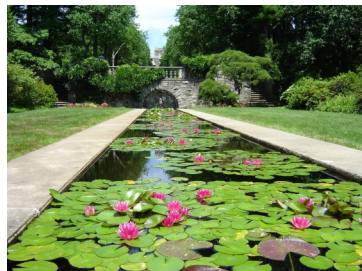
The Schuyler-Colfax House was built circa 1696 by Arent Schuyler and is one of the oldest houses in all of New Jersey that still stands today. One of this home's most distinctive features is the existing jambless, an open-style fireplace with no sides. Eight generations of the Schuyler-Colfax family lived in the home. Arent's

granddaughter, Hester Schuyler, married William Colfax, who served as a Lieutenant and then Captain in General George Washington's Life Guard during the Revolutionary War. William and Hester both lived in the house after they were married. The Schuyler-Colfax family left behind written documents and artifacts. Today, the museum tells the story of the earliest local residents' material culture and how they survived, thrived, and contributed to the community and country.

### SKYLANDS BOTANICAL GARDEN

1304 Sloatsburg Road, Ringwood

The New Jersey Botanical Garden at Skylands in Ringwood State Park is the centerpiece of a property assembled by Francis Lynde Stetson from pioneer farmsteads in the Ramapo Mountains. The gardens cover an extensive area on both sides of Maple Avenue. The Skylands Garden was the first property



purchased under the Green Acres program. In March 1984, Governor Thomas Kean designated 96 acres surrounding the manor house as the State's official botanical garden. Included among the Annual Garden are the Crab Apple Vista, the Perennial Border, the Lilac Garden, the Peony Garden, the Summer Garden, the Azaleas Garden, the Magnolia Walk, Octagonal Garden, and the Winter Garden.

# HISTORIC ATTRACTIONS

---

## VANDERHOEF HOUSE

770 Park Drive, Clifton



The Westervelt-Vanderhoef House (circa 1720) – located within Weasel Brook Park in Clifton – is one of the oldest buildings in Passaic County and is the oldest county-owned facility. Today, the house serves as an extension to both the Departments of Cultural & Historic Affairs and Parks & Recreation. They permit the use

of the building as a meeting space for various organizations, as well as house exhibitions on the history of Clifton, Passaic County, and Weasel Brook Park. In addition, the departments host events and programs here throughout the year.

## VAN RIPER-HOPPER HOUSE MUSEUM

533 Berdan Avenue, Wayne

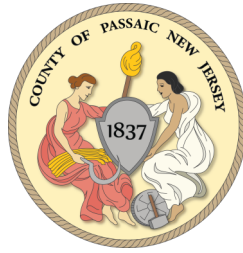
Uriah Van Riper built the Van Riper-Hopper House for his bride Maria (Polly) Berdan in 1786. Architectural research conducted in 2013 produced evidence that the Dutch Colonial house was built in three stages. An abundance of artifacts make it easy to imagine succeeding generations later



living in the home. Five lower rooms contain 18th- and early-19th-century furnishings. Located on its original site, the museum represents the agricultural society that dominated present-day Wayne for over 200 years. Today, the farmstead features an historical herb garden, archaeology laboratory, and community garden that pays homage to its agricultural roots.

# ABOUT PASSAIC COUNTY

---



Passaic County borders New York State on the north and is surrounded on the other sides by Sussex, Morris, Essex and Bergen counties in New Jersey. Passaic County has 193.81 square miles making it the 18th in size among New Jersey's counties. On the basis of population, it ranks as the 9th most populous county in New Jersey. The 2020 population of Passaic County was estimated by the United States Census Bureau to be 518,117.

Passaic County is shaped like a bent hourglass, with the area above the neck running generally north and south, and the portion below running east to west. The upper half of Passaic County is characterized by large lakes and watershed areas with low density development. The lower half of Passaic County contains more than 85% of the population in a third of the area.

Passaic County is made up of 16 municipalities. West Milford Township, at the northern tip of Passaic County, is the largest in size with 78.30 square miles of land. The Borough of Prospect Park is the smallest with .45 square miles of land.

The highest point in Passaic County is Bearfort Mountain in West Milford with an elevation of 1,484 feet. Passaic County's lowest spots are tidal lands along the Passaic River in Passaic and Clifton. Passaic County has over 40 lakes and ponds with areas in excess of 20 acres, as well as nine reservoirs.

Passaic County offers many popular attractions. The Great Falls National Park, includes a 70-foot waterfall created where the Passaic River in Paterson drops over a vertical rock shelf into a deep chasm below. Lambert Castle is a replica of an old English Castle and grounds constructed in 1896 by Catholina Lambert, a textile manufacturer. Dey Mansion in Wayne was occupied by George Washington during the Revolutionary War.